

**MOBKL1B Antibody (C-term)**  
**Purified Rabbit Polyclonal Antibody (Pab)**  
**Catalog # AP7379b****Specification**

---

**MOBKL1B Antibody (C-term) - Product Information**

Application	FC, WB, IHC-P,E
Primary Accession	<a href="#">Q9H8S9</a>
Other Accession	<a href="#">Q3T1J9</a> , <a href="#">Q921Y0</a>
Reactivity	Human
Predicted	Mouse, Rat
Host	Rabbit
Clonality	Polyclonal
Isotype	Rabbit IgG
Antigen Region	188-216

**MOBKL1B Antibody (C-term) - Additional Information****Gene ID** 55233**Other Names**

MOB kinase activator 1A, Mob1 alpha, Mob1A, Mob1 homolog 1B, Mps one binder kinase activator-like 1B, MOB1A, C2orf6, MOB4B, MOBK1B, MOBKL1B

**Target/Specificity**

This MOBKL1B antibody is generated from rabbits immunized with a KLH conjugated synthetic peptide between 188-216 amino acids from the C-terminal region of human MOBKL1B.

**Dilution**

FC~~1:10~50

WB~~1:1000

IHC-P~~1:50~100

E~~Use at an assay dependent concentration.

**Format**

Purified polyclonal antibody supplied in PBS with 0.09% (W/V) sodium azide. This antibody is prepared by Saturated Ammonium Sulfate (SAS) precipitation followed by dialysis against PBS.

**Storage**

Maintain refrigerated at 2-8°C for up to 2 weeks. For long term storage store at -20°C in small aliquots to prevent freeze-thaw cycles.

**Precautions**

MOBKL1B Antibody (C-term) is for research use only and not for use in diagnostic or therapeutic procedures.

**MOBKL1B Antibody (C-term) - Protein Information**

**Name** MOB1A ([HGNC:16015](#))

**Function** Activator of LATS1/2 in the Hippo signaling pathway which plays a pivotal role in organ size control and tumor suppression by restricting proliferation and promoting apoptosis. The core of this pathway is composed of a kinase cascade wherein STK3/MST2 and STK4/MST1, in complex with its regulatory protein SAV1, phosphorylates and activates LATS1/2 in complex with its regulatory protein MOB1, which in turn phosphorylates and inactivates YAP1 oncoprotein and WWTR1/TAZ. Phosphorylation of YAP1 by LATS1/2 inhibits its translocation into the nucleus to regulate cellular genes important for cell proliferation, cell death, and cell migration. Stimulates the kinase activity of STK38 and STK38L. Acts cooperatively with STK3/MST2 to activate STK38.

**Tissue Location**

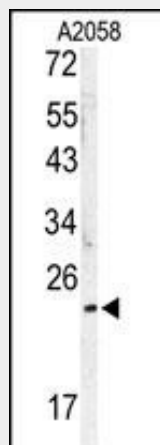
Adrenal gland, bone marrow, brain, placenta, prostate, salivary gland, skeletal muscle, testis, thymus, thyroid gland, heart, spinal cord, fetal brain and fetal liver

**MOBKL1B Antibody (C-term) - Protocols**

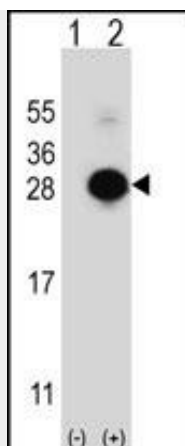
Provided below are standard protocols that you may find useful for product applications.

- [Western Blot](#)
- [Blocking Peptides](#)
- [Dot Blot](#)
- [Immunohistochemistry](#)
- [Immunofluorescence](#)
- [Immunoprecipitation](#)
- [Flow Cytometry](#)
- [Cell Culture](#)

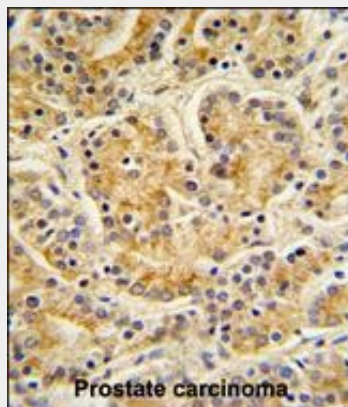
**MOBKL1B Antibody (C-term) - Images**



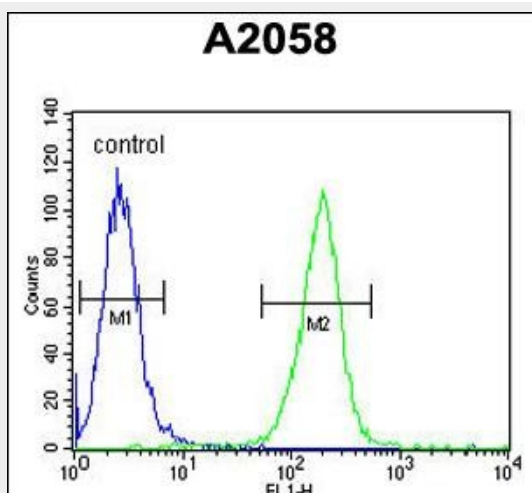
Western blot analysis of MOBKL1B antibody (C-term) (Cat.# AP7379b) in A2058 cell line lysates (35ug/lane). MOBKL1B (arrow) was detected using the purified Pab.



Western blot analysis of MOBKL1B (arrow) using rabbit polyclonal MOBKL1B Antibody (C-term) (Cat. #AP7379b). 293 cell lysates (2 ug/lane) either nontransfected (Lane 1) or transiently transfected (Lane 2) with the MOBKL1B gene.



MOBKL1B Antibody (C-term) (Cat.# AP7379b) IHC analysis in formalin fixed and paraffin embedded human Prostate carcinoma followed by peroxidase conjugation of the secondary antibody and DAB staining. This data demonstrates the use of the MOBKL1B Antibody (C-term) for immunohistochemistry. Clinical relevance has not been evaluated.



MOBKL1B Antibody (C-term) (Cat. #AP7379b) flow cytometric analysis of A2058 cells (right histogram) compared to a negative control cell (left histogram). FITC-conjugated goat-anti-rabbit secondary antibodies were used for the analysis.

#### MOBKL1B Antibody (C-term) - Background

MOBK1B stimulates the kinase activity of STK38 and STK38L.

**MOBK1B Antibody (C-term) - References**

Bichsel,S.J., J. Biol. Chem. 279 (34), 35228-35235 (2004)  
Stavridi,E.S., Structure 11 (9), 1163-1170 (2003)

**MOBK1B Antibody (C-term) - Citations**

- [Mutual dependence of Mob1 and the chromosomal passenger complex for localization during mitosis.](#)