

**EMR2 Polyclonal Antibody**  
**Catalog # AP73808****Specification**

---

**EMR2 Polyclonal Antibody - Product Information**

Application	WB, IHC-P
Primary Accession	<a href="#">Q9UHX3</a>
Reactivity	Human
Host	Rabbit
Clonality	Polyclonal

**EMR2 Polyclonal Antibody - Additional Information****Gene ID** 30817**Other Names**

EMR2; EGF-like module-containing mucin-like hormone receptor-like 2; EGF-like module receptor 2; CD312

**Dilution**

WB~~Western Blot: 1/500 - 1/2000. IHC-p: 1:100-1:300. ELISA: 1/10000. Not yet tested in other applications.

IHC-P~~N/A

**Format**

Liquid in PBS containing 50% glycerol, 0.5% BSA and 0.09% (W/V) sodium azide.

**Storage Conditions**

-20°C

**EMR2 Polyclonal Antibody - Protein Information****Name** ADGRE2 ([HGNC:3337](#))**Synonyms** EMR2**Function**

Cell surface receptor that binds to the chondroitin sulfate moiety of glycosaminoglycan chains and promotes cell attachment. Promotes granulocyte chemotaxis, degranulation and adhesion. In macrophages, promotes the release of inflammatory cytokines, including IL8 and TNF. Signals probably through G-proteins. Is a regulator of mast cell degranulation (PubMed:<a href="http://www.uniprot.org/citations/26841242" target="\_blank">26841242</a>).

**Cellular Location**

Cell membrane; Multi-pass membrane protein. Cell projection, ruffle membrane; Multi-pass membrane protein. Note=Localized at the leading edge of migrating cells.

**Tissue Location**

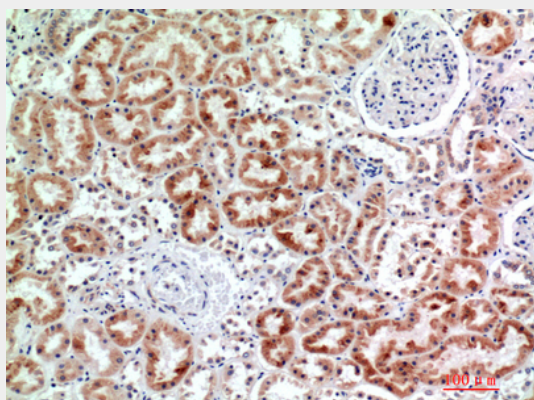
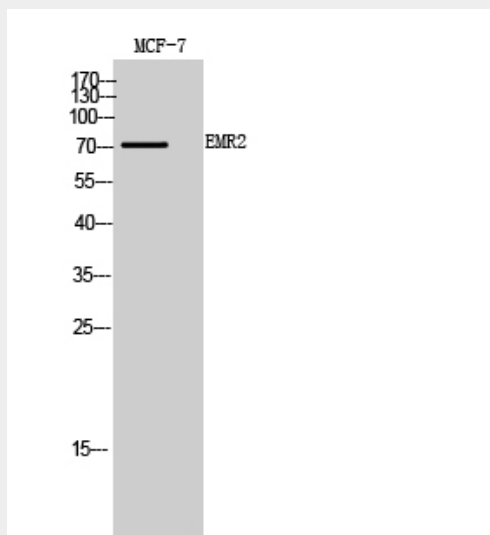
Expression is restricted to myeloid cells. Highest expression was found in peripheral blood leukocytes, followed by spleen and lymph nodes, with intermediate to low levels in thymus, bone marrow, fetal liver, placenta, and lung, and no expression in heart, brain, skeletal muscle, kidney, or pancreas. Expression is also detected in monocyte/macrophage and Jurkat cell lines but not in other cell lines tested. High expression in mast cells (PubMed:26841242)

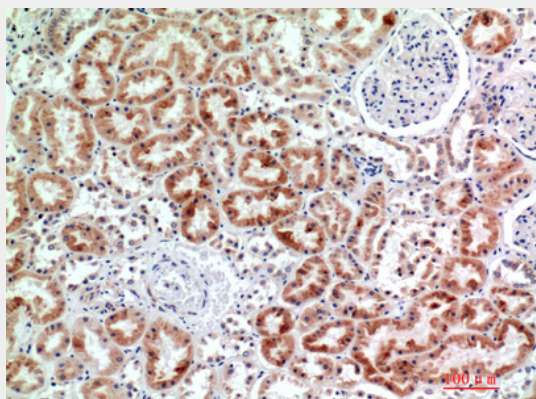
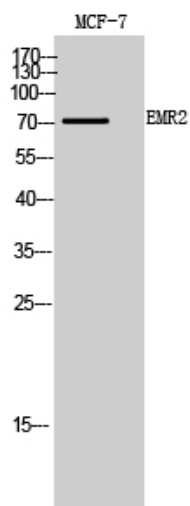
### EMR2 Polyclonal Antibody - Protocols

Provided below are standard protocols that you may find useful for product applications.

- [Western Blot](#)
- [Blocking Peptides](#)
- [Dot Blot](#)
- [Immunohistochemistry](#)
- [Immunofluorescence](#)
- [Immunoprecipitation](#)
- [Flow Cytometry](#)
- [Cell Culture](#)

### EMR2 Polyclonal Antibody - Images





### EMR2 Polyclonal Antibody - Background

Cell surface receptor that binds to the chondroitin sulfate moiety of glycosaminoglycan chains and promotes cell attachment. Promotes granulocyte chemotaxis, degranulation and adhesion. In macrophages, promotes the release of inflammatory cytokines, including IL8 and TNF. Signals probably through G- proteins. Is a regulator of mast cell degranulation (PubMed:26841242).