

CD155 Polyclonal Antibody
Catalog # AP73811**Specification**

CD155 Polyclonal Antibody - Product Information

Application	WB
Primary Accession	P15151
Reactivity	Human, Mouse, Rat
Host	Rabbit
Clonality	Polyclonal

CD155 Polyclonal Antibody - Additional Information**Gene ID** 5817**Other Names**

PVR; PVS; Poliovirus receptor; Nectin-like protein 5; NECL-5; CD155

Dilution

WB~~Western Blot: 1/500 - 1/2000. ELISA: 1/10000. Not yet tested in other applications.

Format

Liquid in PBS containing 50% glycerol, 0.5% BSA and 0.09% (W/V) sodium azide.

Storage Conditions

-20°C

CD155 Polyclonal Antibody - Protein Information**Name** PVR**Synonyms** PVS**Function**

Mediates NK cell adhesion and triggers NK cell effector functions. Binds two different NK cell receptors: CD96 and CD226. These interactions accumulates at the cell-cell contact site, leading to the formation of a mature immunological synapse between NK cell and target cell. This may trigger adhesion and secretion of lytic granules and IFN-gamma and activate cytotoxicity of activated NK cells. May also promote NK cell-target cell modular exchange, and PVR transfer to the NK cell. This transfer is more important in some tumor cells expressing a lot of PVR, and may trigger fratricide NK cell activation, providing tumors with a mechanism of immunoevasion. Plays a role in mediating tumor cell invasion and migration.

Cellular Location

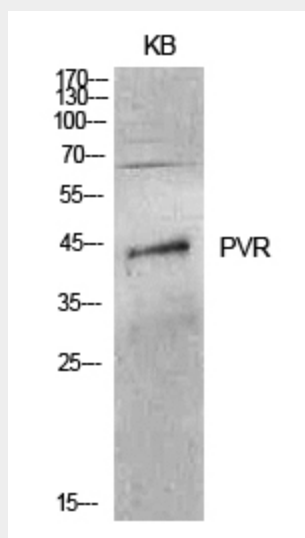
[Isoform Alpha]: Cell membrane; Single-pass type I membrane protein [Isoform Beta]: Secreted.

CD155 Polyclonal Antibody - Protocols

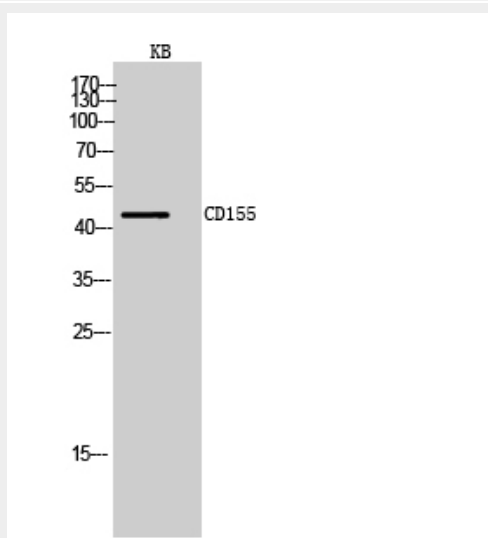
Provided below are standard protocols that you may find useful for product applications.

- [Western Blot](#)
- [Blocking Peptides](#)
- [Dot Blot](#)
- [Immunohistochemistry](#)
- [Immunofluorescence](#)
- [Immunoprecipitation](#)
- [Flow Cytometry](#)
- [Cell Culture](#)

CD155 Polyclonal Antibody - Images



Western Blot analysis of KB cells using CD155 Polyclonal Antibody.. Secondary antibody was diluted at 1:20000



Western Blot analysis of KB cells using CD155 Polyclonal Antibody. Secondary antibody was diluted at 1:20000

CD155 Polyclonal Antibody - Background

Mediates NK cell adhesion and triggers NK cell effector functions. Binds two different NK cell receptors: CD96 and CD226. These interactions accumulate at the cell-cell contact site, leading to the formation of a mature immunological synapse between NK cell and target cell. This may trigger adhesion and secretion of lytic granules and IFN-gamma and activate cytotoxicity of activated NK cells. May also promote NK cell-target cell molecular exchange, and PVR transfer to the NK cell. This transfer is more important in some tumor cells expressing a lot of PVR, and may trigger fratricide NK cell activation, providing tumors with a mechanism of immunoevasion. Plays a role in mediating tumor cell invasion and migration.