

CD180 Polyclonal Antibody
Catalog # AP73812**Specification**

CD180 Polyclonal Antibody - Product Information

Application	WB
Primary Accession	Q99467
Reactivity	Human, Mouse, Rat
Host	Rabbit
Clonality	Polyclonal

CD180 Polyclonal Antibody - Additional Information**Gene ID** 4064**Other Names**

CD180; LY64; RP105; CD180 antigen; Lymphocyte antigen 64; Radioprotective 105 kDa protein; CD180

Dilution

WB~~Western Blot: 1/500 - 1/2000. ELISA: 1/10000. Not yet tested in other applications.

Format

Liquid in PBS containing 50% glycerol, 0.5% BSA and 0.09% (W/V) sodium azide.

Storage Conditions

-20°C

CD180 Polyclonal Antibody - Protein Information**Name** CD180**Synonyms** LY64, RP105**Function**

May cooperate with MD-1 and TLR4 to mediate the innate immune response to bacterial lipopolysaccharide (LPS) in B-cells. Leads to NF- kappa-B activation. Also involved in the life/death decision of B-cells (By similarity).

Cellular Location

Cell membrane; Single-pass type I membrane protein

Tissue Location

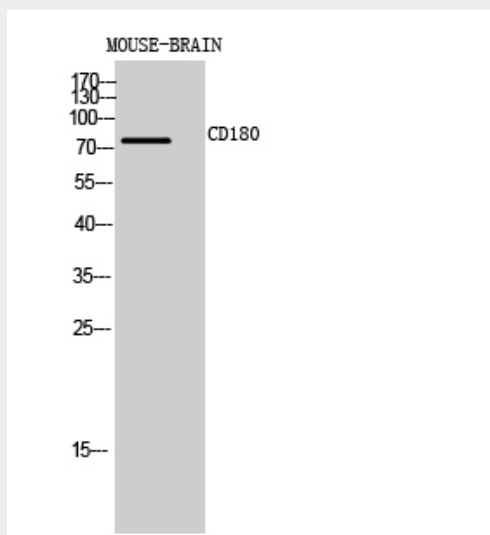
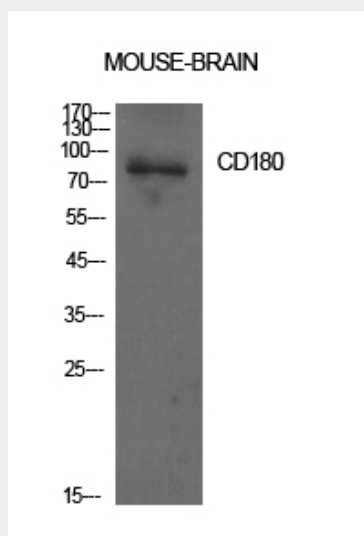
Expressed mainly on mature peripheral B cells. Detected in spleen, lymph node and appendix. Not detected in pre-B and -T cells

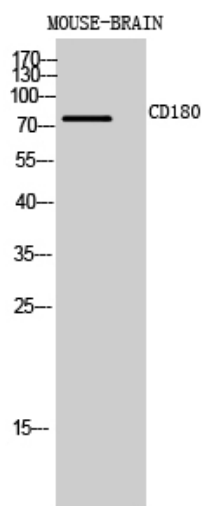
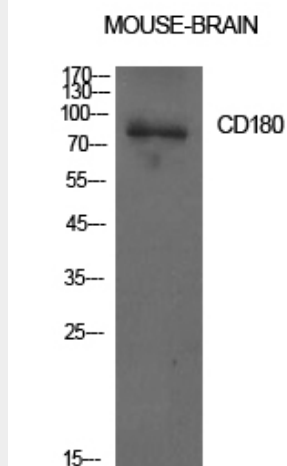
CD180 Polyclonal Antibody - Protocols

Provided below are standard protocols that you may find useful for product applications.

- [Western Blot](#)
- [Blocking Peptides](#)
- [Dot Blot](#)
- [Immunohistochemistry](#)
- [Immunofluorescence](#)
- [Immunoprecipitation](#)
- [Flow Cytometry](#)
- [Cell Culture](#)

CD180 Polyclonal Antibody - Images





CD180 Polyclonal Antibody - Background

May cooperate with MD-1 and TLR4 to mediate the innate immune response to bacterial lipopolysaccharide (LPS) in B-cells. Leads to NF-kappa-B activation. Also involved in the life/death decision of B-cells (By similarity).