

**Amphiregulin Polyclonal Antibody**  
**Catalog # AP73827****Specification**

---

**Amphiregulin Polyclonal Antibody - Product Information**

Application	WB
Primary Accession	<a href="#">P15514</a>
Reactivity	Human
Host	Rabbit
Clonality	Polyclonal

**Amphiregulin Polyclonal Antibody - Additional Information****Gene ID** 374**Other Names**

AREG; SDGF; AREGB; Amphiregulin; AR; Colorectum cell-derived growth factor; CRDGF

**Dilution**

WB~~Western Blot: 1/500 - 1/2000. ELISA: 1/10000. Not yet tested in other applications.

**Format**

Liquid in PBS containing 50% glycerol, 0.5% BSA and 0.09% (W/V) sodium azide.

**Storage Conditions**

-20°C

**Amphiregulin Polyclonal Antibody - Protein Information****Name** AREG ([HGNC:651](#))**Function**

Ligand of the EGF receptor/EGFR. Autocrine growth factor as well as a mitogen for a broad range of target cells including astrocytes, Schwann cells and fibroblasts.

**Cellular Location**

Membrane; Single-pass membrane protein.

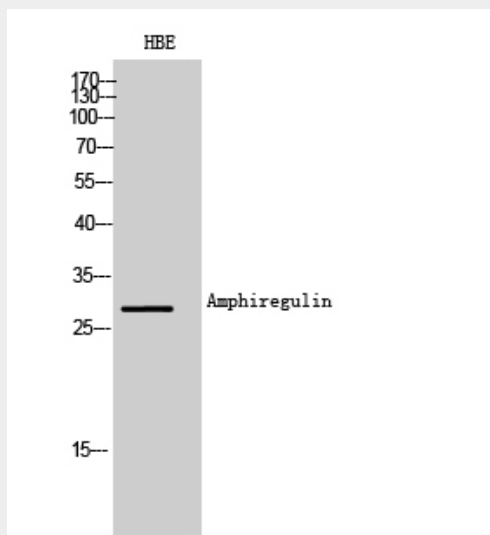
**Amphiregulin Polyclonal Antibody - Protocols**

Provided below are standard protocols that you may find useful for product applications.

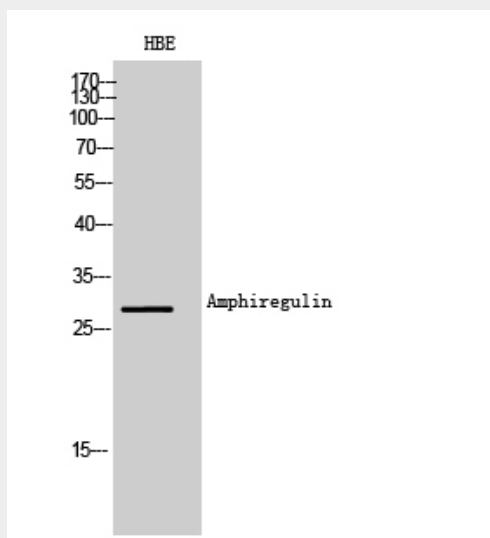
- [Western Blot](#)
- [Blocking Peptides](#)
- [Dot Blot](#)
- [Immunohistochemistry](#)

- [Immunofluorescence](#)
- [Immunoprecipitation](#)
- [Flow Cytometry](#)
- [Cell Culture](#)

### Amphiregulin Polyclonal Antibody - Images



Western Blot analysis of HBE cells using Amphiregulin Polyclonal Antibody.. Secondary antibody was diluted at 1:20000



Western Blot analysis of HBE cells using Amphiregulin Polyclonal Antibody.. Secondary antibody was diluted at 1:20000

### Amphiregulin Polyclonal Antibody - Background

Ligand of the EGF receptor/EGFR. Autocrine growth factor as well as a mitogen for a broad range of target cells including astrocytes, Schwann cells and fibroblasts.