

NTN Polyclonal Antibody
Catalog # AP73832**Specification**

NTN Polyclonal Antibody - Product Information

Application	WB
Primary Accession	Q99748
Reactivity	Human
Host	Rabbit
Clonality	Polyclonal

NTN Polyclonal Antibody - Additional Information**Gene ID** 4902**Other Names**

NRTN; Neurturin

Dilution

WB~~Western Blot: 1/500 - 1/2000. ELISA: 1/10000. Not yet tested in other applications.

Format

Liquid in PBS containing 50% glycerol, 0.5% BSA and 0.09% (W/V) sodium azide.

Storage Conditions

-20°C

NTN Polyclonal Antibody - Protein Information**Name** NRTN {ECO:0000303|PubMed:31535977, ECO:0000312|HGNC:HGNC:8007}**Function**

Growth factor that supports the survival of sympathetic neurons in culture (PubMed:8945474). May regulate the development and maintenance of the CNS (PubMed:8945474). Involved in the development of the neural crest (PubMed:15242795). Might control the size of non- neuronal cell population such as haemopoietic cells (PubMed:8945474). Acts by binding to its coreceptor, GFRA2, leading to autophosphorylation and activation of the RET receptor (PubMed:10829012, PubMed:29414779, PubMed:31535977). Heparan sulfate- binding is required for signaling (PubMed:29414779).

Cellular Location

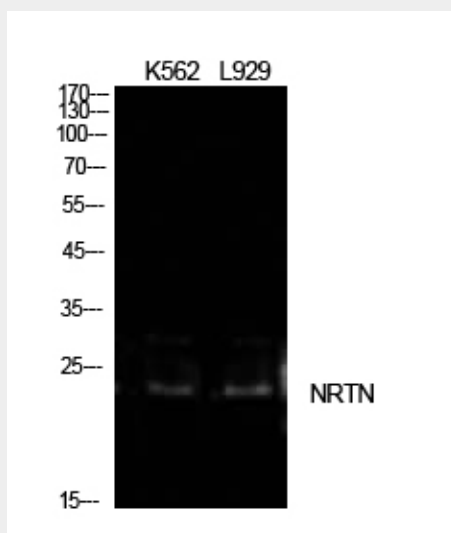
Secreted {ECO:0000250|UniProtKB:P97463}.

NTN Polyclonal Antibody - Protocols

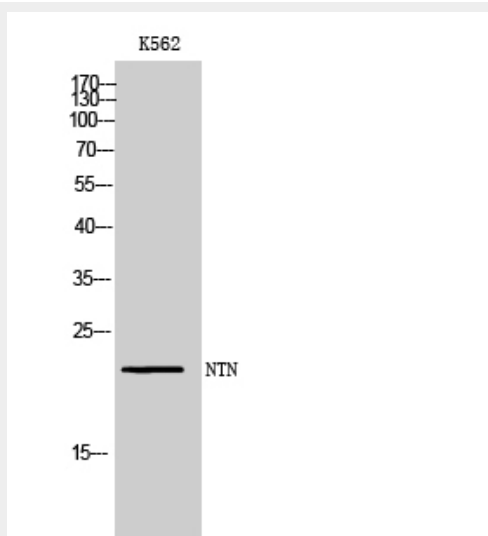
Provided below are standard protocols that you may find useful for product applications.

- [Western Blot](#)
- [Blocking Peptides](#)
- [Dot Blot](#)
- [Immunohistochemistry](#)
- [Immunofluorescence](#)
- [Immunoprecipitation](#)
- [Flow Cytometry](#)
- [Cell Culture](#)

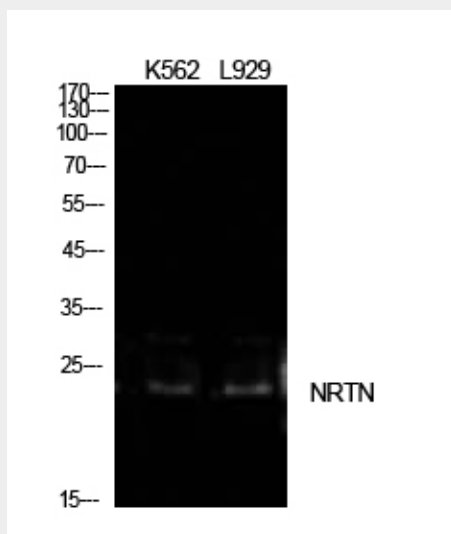
NTN Polyclonal Antibody - Images



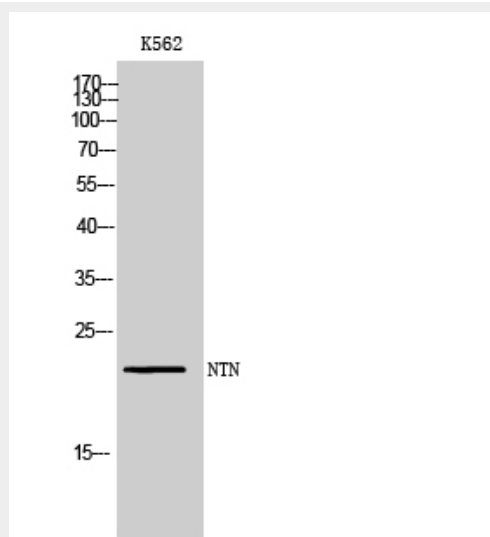
Western Blot analysis of K562, L929 cells using NTN Polyclonal Antibody. Antibody was diluted at 1:1000. Secondary antibody was diluted at 1:20000



Western Blot analysis of K562 cells using NTN Polyclonal Antibody diluted at 1:1000. Secondary antibody was diluted at 1:20000



Western Blot analysis of K562, L929 cells using NTN Polyclonal Antibody. Antibody was diluted at 1:1000. Secondary antibody was diluted at 1:20000



Western Blot analysis of K562 cells using NTN Polyclonal Antibody diluted at 1:1000. Secondary antibody was diluted at 1:20000

NTN Polyclonal Antibody - Background

Supports the survival of sympathetic neurons in culture. May regulate the development and maintenance of the CNS. Might control the size of non-neuronal cell population such as haemopoietic cells.