

BMP-6 Polyclonal Antibody
Catalog # AP73838**Specification****BMP-6 Polyclonal Antibody - Product Information**

Application	WB
Primary Accession	P22004
Reactivity	Human, Mouse, Rat
Host	Rabbit
Clonality	Polyclonal

BMP-6 Polyclonal Antibody - Additional Information**Gene ID** 654**Other Names**

BMP6; VGR; Bone morphogenetic protein 6; BMP-6; VG-1-related protein; VG-1-R; VGR-1

Dilution

WB~~Western Blot: 1/500 - 1/2000. ELISA: 1/10000. Not yet tested in other applications.

Format

Liquid in PBS containing 50% glycerol, 0.5% BSA and 0.09% (W/V) sodium azide.

Storage Conditions

-20°C

BMP-6 Polyclonal Antibody - Protein Information**Name** BMP6**Synonyms** VGR**Function**

Growth factor of the TGF-beta superfamily that plays essential roles in many developmental processes including cartilage and bone formation (PubMed: [31019025](http://www.uniprot.org/citations/31019025)). Also plays an important role in the regulation of HAMP/hepcidin expression and iron metabolism by acting as a ligand for hemojuvelin/HJV (PubMed: [26582087](http://www.uniprot.org/citations/26582087)). Also acts to promote expression of HAMP, potentially via the interaction with its receptor BMPRI1/ALK3 (PubMed: [30097509](http://www.uniprot.org/citations/30097509), PubMed: [31800957](http://www.uniprot.org/citations/31800957)). Initiates the canonical BMP signaling cascade by associating with type I receptor ACVR1 and type II receptor ACVR2B (PubMed: [18070108](http://www.uniprot.org/citations/18070108)). In turn, ACVR1 propagates signal by phosphorylating SMAD1/5/8 that travel to the nucleus and act as activators and repressors of transcription of target. Can also signal through non-canonical pathway such as TAZ-Hippo signaling cascade to

modulate VEGF signaling by regulating VEGFR2 expression (PubMed:33021694).

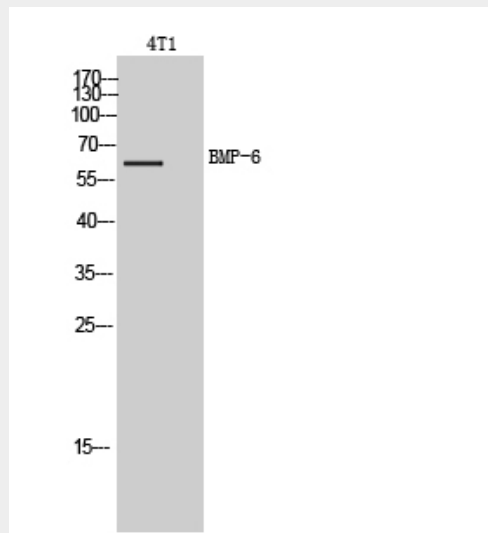
Cellular Location
Secreted.

BMP-6 Polyclonal Antibody - Protocols

Provided below are standard protocols that you may find useful for product applications.

- [Western Blot](#)
- [Blocking Peptides](#)
- [Dot Blot](#)
- [Immunohistochemistry](#)
- [Immunofluorescence](#)
- [Immunoprecipitation](#)
- [Flow Cytometry](#)
- [Cell Culture](#)

BMP-6 Polyclonal Antibody - Images



Western Blot analysis of 4T1 cells using BMP-6 Polyclonal Antibody.. Secondary antibody was diluted at 1:20000

BMP-6 Polyclonal Antibody - Background

Induces cartilage and bone formation.