

FKBP10 Antibody (N-term)
Affinity Purified Rabbit Polyclonal Antibody (Pab)
Catalog # AP7383a**Specification**

FKBP10 Antibody (N-term) - Product Information

Application	WB, IHC-P, FC,E
Primary Accession	Q96AY3
Reactivity	Human
Host	Rabbit
Clonality	Polyclonal
Isotype	Rabbit IgG
Antigen Region	57-87

FKBP10 Antibody (N-term) - Additional Information**Gene ID** 60681**Other Names**

Peptidyl-prolyl cis-trans isomerase FKBP10, PPIase FKBP10, 65 kDa FK506-binding protein, 65 kDa FKBP, FKBP-65, FK506-binding protein 10, FKBP-10, Immunophilin FKBP65, Rotamase, FKBP10, FKBP65

Target/Specificity

This FKBP10 antibody is generated from rabbits immunized with a KLH conjugated synthetic peptide between 57-87 amino acids of human FKBP10.

Dilution

WB~~1:1000
IHC-P~~1:50~100
FC~~1:10~50
E~~Use at an assay dependent concentration.

Format

Purified polyclonal antibody supplied in PBS with 0.09% (W/V) sodium azide. This antibody is purified through a protein A column, followed by peptide affinity purification.

Storage

Maintain refrigerated at 2-8°C for up to 2 weeks. For long term storage store at -20°C in small aliquots to prevent freeze-thaw cycles.

Precautions

FKBP10 Antibody (N-term) is for research use only and not for use in diagnostic or therapeutic procedures.

FKBP10 Antibody (N-term) - Protein Information**Name** FKBP10

Synonyms FKBP65

Function PPlases accelerate the folding of proteins during protein synthesis.

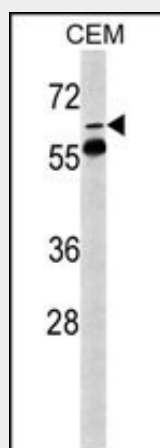
Cellular Location

Endoplasmic reticulum lumen {ECO:0000255|PROSITE- ProRule:PRU10138}

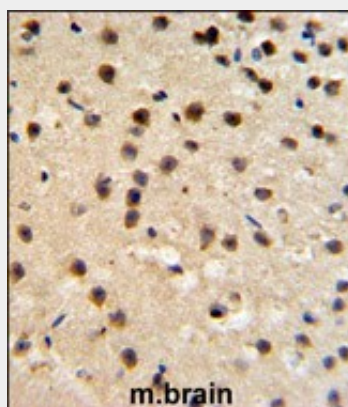
FKBP10 Antibody (N-term) - Protocols

Provided below are standard protocols that you may find useful for product applications.

- [Western Blot](#)
- [Blocking Peptides](#)
- [Dot Blot](#)
- [Immunohistochemistry](#)
- [Immunofluorescence](#)
- [Immunoprecipitation](#)
- [Flow Cytometry](#)
- [Cell Culture](#)

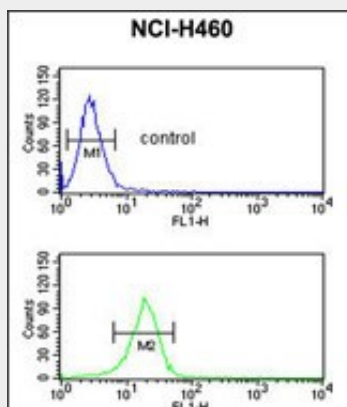
FKBP10 Antibody (N-term) - Images

Western blot analysis of FKBP10 Antibody (N-term) (Cat. #AP7383a) in CEM cell line lysates (35ug/lane). FKBP10 (arrow) was detected using the purified Pab.



FKBP10 Antibody (N-term) (Cat. #AP7383a) IHC analysis in formalin fixed and paraffin embedded mouse brain tissue followed by peroxidase conjugation of the secondary antibody and DAB

staining. This data demonstrates the use of the FKBP10 Antibody (N-term) for immunohistochemistry. Clinical relevance has not been evaluated.



FKBP10 Antibody (N-term) (Cat. #AP7383a) flow cytometric analysis of NCI-H460 cells (bottom histogram) compared to a negative control cell (top histogram). FITC-conjugated goat-anti-rabbit secondary antibodies were used for the analysis.

FKBP10 Antibody (N-term) - Background

The protein belongs to the FKBP-type peptidyl-prolyl cis/trans isomerase family. It is located in endoplasmic reticulum and acts as molecular chaperones.

FKBP10 Antibody (N-term) - References

- Ishikawa, Y., J. Biol. Chem. 283 (46), 31584-31590 (2008)
- Foster, L.J., J. Proteome Res. 5 (1), 64-75 (2006)
- Zhang, H., Nat. Biotechnol. 21 (6), 660-666 (2003)