

**FKBP10 Antibody (C-term)**  
**Purified Rabbit Polyclonal Antibody (Pab)**  
**Catalog # AP7383b****Specification**

---

**FKBP10 Antibody (C-term) - Product Information**

Application	WB, IHC-P, FC,E
Primary Accession	<a href="#">Q96AY3</a>
Reactivity	Human
Host	Rabbit
Clonality	Polyclonal
Isotype	Rabbit IgG
Calculated MW	64245
Antigen Region	552-580

**FKBP10 Antibody (C-term) - Additional Information****Gene ID** 60681**Other Names**

Peptidyl-prolyl cis-trans isomerase FKBP10, PPIase FKBP10, 65 kDa FK506-binding protein, 65 kDa FKBP, FKBP-65, FK506-binding protein 10, FKBP-10, Immunophilin FKBP65, Rotamase, FKBP10, FKBP65

**Target/Specificity**

This FKBP10 antibody is generated from rabbits immunized with a KLH conjugated synthetic peptide between 552-580 amino acids from the C-terminal region of human FKBP10.

**Dilution**

WB~~1:1000  
IHC-P~~1:100  
FC~~1:10~50

**Format**

Purified polyclonal antibody supplied in PBS with 0.09% (W/V) sodium azide. This antibody is prepared by Saturated Ammonium Sulfate (SAS) precipitation followed by dialysis against PBS.

**Storage**

Maintain refrigerated at 2-8°C for up to 2 weeks. For long term storage store at -20°C in small aliquots to prevent freeze-thaw cycles.

**Precautions**

FKBP10 Antibody (C-term) is for research use only and not for use in diagnostic or therapeutic procedures.

**FKBP10 Antibody (C-term) - Protein Information****Name** FKBP10

**Synonyms** FKBP65

**Function** PPlases accelerate the folding of proteins during protein synthesis.

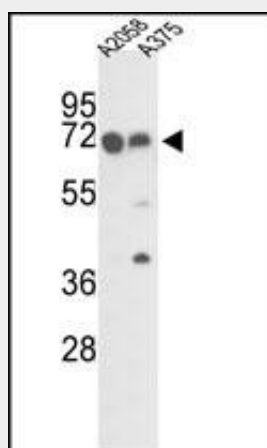
**Cellular Location**

Endoplasmic reticulum lumen {ECO:0000255|PROSITE- ProRule:PRU10138}

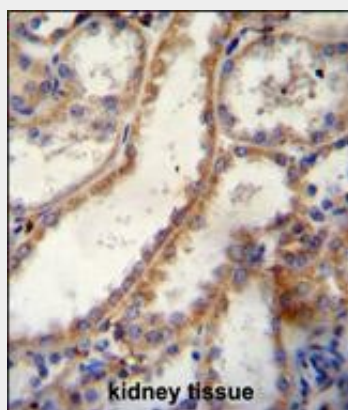
**FKBP10 Antibody (C-term) - Protocols**

Provided below are standard protocols that you may find useful for product applications.

- [Western Blot](#)
- [Blocking Peptides](#)
- [Dot Blot](#)
- [Immunohistochemistry](#)
- [Immunofluorescence](#)
- [Immunoprecipitation](#)
- [Flow Cytometry](#)
- [Cell Culture](#)

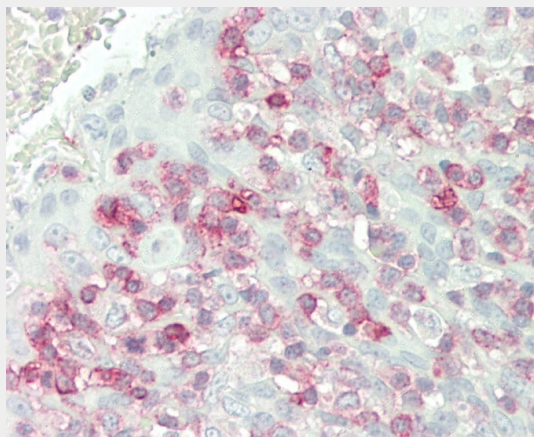
**FKBP10 Antibody (C-term) - Images**

Western blot analysis of FKBP10 Antibody (C-term) (Cat.# AP7383b) in A2058 and A375 cell line lysates (35ug/lane). FKBP10 (arrow) was detected using the purified Pab.

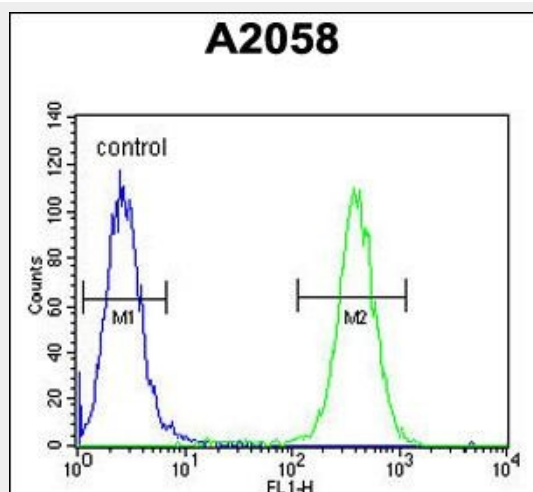


FKBP10 Antibody (C-term) (Cat. #AP7383B) immunohistochemistry analysis in formalin fixed and

paraffin embedded human kidney tissue followed by peroxidase conjugation of the secondary antibody and DAB staining. This data demonstrates the use of FKBP10 Antibody (C-term) for immunohistochemistry. Clinical relevance has not been evaluated.



Formalin-fixed and paraffin-embedded H. tonsil tissue reacted with FKBP10 Antibody (C-term) (Cat#AP7383b).



FKBP10 Antibody (C-term) (Cat. #AP7383b) flow cytometric analysis of A2058 cells (right histogram) compared to a negative control cell (left histogram). FITC-conjugated goat-anti-rabbit secondary antibodies were used for the analysis.

#### **FKBP10 Antibody (C-term) - Background**

The protein belongs to the FKBP-type peptidyl-prolyl cis/trans isomerase family. It is located in endoplasmic reticulum and acts as molecular chaperones.

#### **FKBP10 Antibody (C-term) - References**

- Ishikawa, Y., J. Biol. Chem. 283 (46), 31584-31590 (2008)
- Foster, L.J., J. Proteome Res. 5 (1), 64-75 (2006)
- Zhang, H., Nat. Biotechnol. 21 (6), 660-666 (2003)