

SEC22B Polyclonal Antibody
Catalog # AP73863**Specification**

SEC22B Polyclonal Antibody - Product Information

Application	WB, IHC-P
Primary Accession	O75396
Reactivity	Human, Mouse, Rat
Host	Rabbit
Clonality	Polyclonal

SEC22B Polyclonal Antibody - Additional Information**Gene ID** 9554**Other Names**

SEC22B; SEC22L1; Vesicle-trafficking protein SEC22b; ER-Golgi SNARE of 24 kDa; ERS-24; ERS24; SEC22 vesicle-trafficking protein homolog B; SEC22 vesicle-trafficking protein-like 1

Dilution

WB~~Western Blot: 1/500 - 1/2000. IHC-p: 1:100-1:300. ELISA: 1/10000. Not yet tested in other applications.

IHC-P~~N/A

Format

Liquid in PBS containing 50% glycerol, 0.5% BSA and 0.09% (W/V) sodium azide.

Storage Conditions

-20°C

SEC22B Polyclonal Antibody - Protein Information**Name** SEC22B**Synonyms** SEC22L1**Function**

SNARE involved in targeting and fusion of ER-derived transport vesicles with the Golgi complex as well as Golgi-derived retrograde transport vesicles with the ER.

Cellular Location

Endoplasmic reticulum membrane {ECO:0000250|UniProtKB:Q4KM74}; Single-pass type IV membrane protein {ECO:0000250|UniProtKB:Q4KM74}. Endoplasmic reticulum-Golgi intermediate compartment membrane {ECO:0000250|UniProtKB:Q4KM74}. Golgi apparatus, cis-Golgi network membrane {ECO:0000250|UniProtKB:Q4KM74} Golgi apparatus, trans-Golgi network membrane {ECO:0000250|UniProtKB:Q4KM74}. Melanosome. Note=Concentrated most in the intermediate compartment/cis-Golgi network and the cis-Golgi cisternae 1 and 2. Greatly reduced in concentration at the trans end of the Golgi apparatus (By similarity). Identified by mass

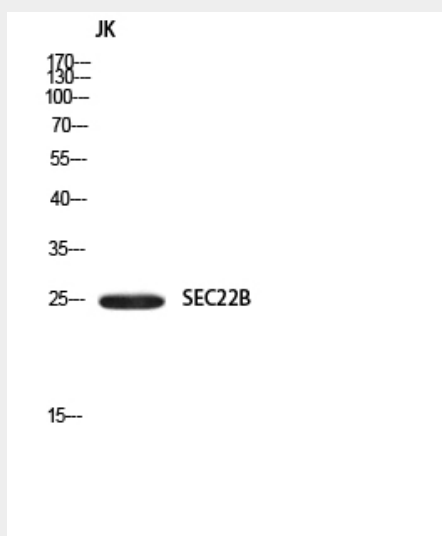
spectrometry in melanosome fractions from stage I to stage IV (PubMed:17081065)
{ECO:0000250|UniProtKB:Q4KM74, ECO:0000269|PubMed:17081065}

SEC22B Polyclonal Antibody - Protocols

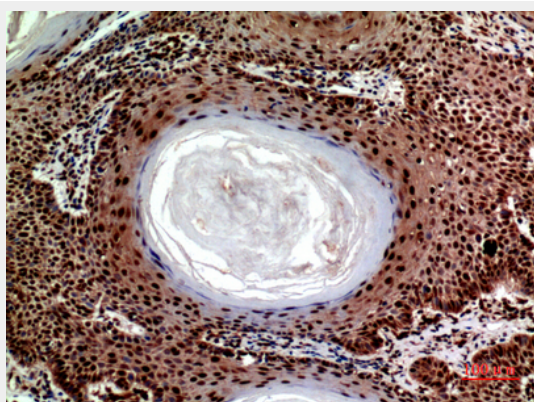
Provided below are standard protocols that you may find useful for product applications.

- [Western Blot](#)
- [Blocking Peptides](#)
- [Dot Blot](#)
- [Immunohistochemistry](#)
- [Immunofluorescence](#)
- [Immunoprecipitation](#)
- [Flow Cytometry](#)
- [Cell Culture](#)

SEC22B Polyclonal Antibody - Images



Western blot analysis of JK using SEC22B antibody.. Secondary antibody was diluted at 1:20000



Immunohistochemical analysis of paraffin-embedded human-skin, antibody was diluted at 1:100

SEC22B Polyclonal Antibody - Background

SNARE involved in targeting and fusion of ER-derived transport vesicles with the Golgi complex as

well as Golgi-derived retrograde transport vesicles with the ER.