

Dectin-2 Polyclonal Antibody
Catalog # AP73868**Specification**

Dectin-2 Polyclonal Antibody - Product Information

Application	WB
Primary Accession	Q6EIG7
Reactivity	Human
Host	Rabbit
Clonality	Polyclonal

Dectin-2 Polyclonal Antibody - Additional Information**Gene ID** 93978**Other Names**

CLEC6A; CLECSF10; DECTIN2; C-type lectin domain family 6 member A; C-type lectin superfamily member 10; Dendritic cell-associated C-type lectin 2; DC-associated C-type lectin 2; Dectin-2

Dilution

WB~~Western Blot: 1/500 - 1/2000. IHC-p: 1:100-1:300. ELISA: 1/10000. Not yet tested in other applications.

Format

Liquid in PBS containing 50% glycerol, 0.5% BSA and 0.09% (W/V) sodium azide.

Storage Conditions

-20°C

Dectin-2 Polyclonal Antibody - Protein Information**Name** CLEC6A ([HGNC:14556](#))**Function**

Calcium-dependent lectin that acts as a pattern recognition receptor (PRR) of the innate immune system: specifically recognizes and binds alpha-mannans on *C.albicans* hyphae (PubMed:23911656, PubMed:28652405). Binding of *C.albicans* alpha-mannans to this receptor complex leads to phosphorylation of the immunoreceptor tyrosine-based activation motif (ITAM) of FCER1G, triggering activation of SYK, CARD9 and NF-kappa-B, consequently driving maturation of antigen-presenting cells and shaping antigen-specific priming of T-cells toward effector T-helper 1 and T-helper 17 cell subtypes (By similarity). Recognizes also, in a mannose-dependent manner, allergens from house dust mite and fungi, by promoting cysteinyl leukotriene production (By similarity). Recognizes soluble elements from the eggs of *Shistosoma mansoni* altering adaptive immune responses (By similarity).

Cellular Location

Cell membrane; Single-pass type II membrane protein

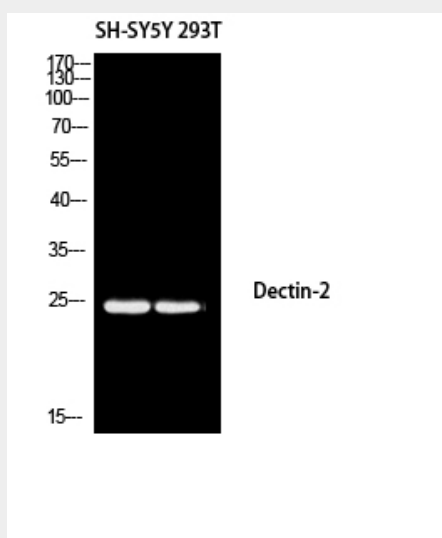
Tissue Location

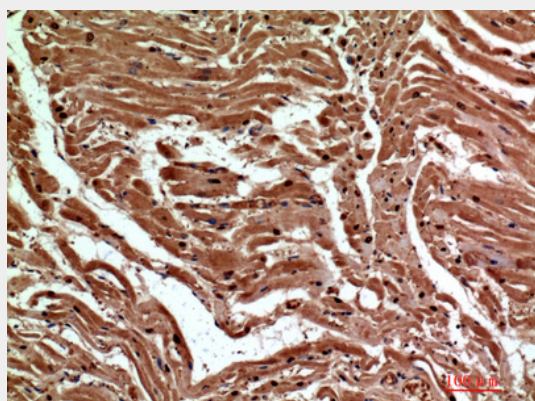
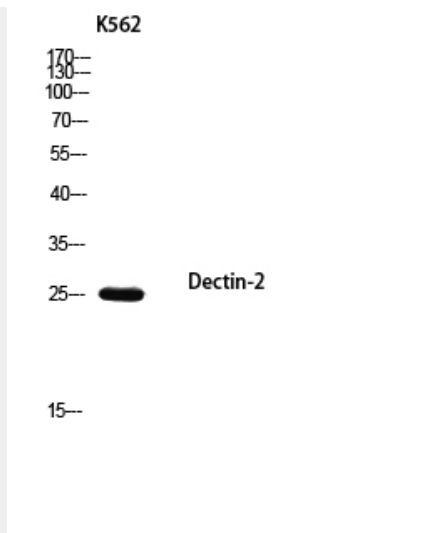
Expressed in lung, spleen, lymph node, leukocytes, bone marrow, tonsils and dendritic cells. Strongly expressed in purified monocytes and weakly in B-cells. In peripheral blood cells, preferentially expressed in plasmacytoids rather than myeloids

Dectin-2 Polyclonal Antibody - Protocols

Provided below are standard protocols that you may find useful for product applications.

- [Western Blot](#)
- [Blocking Peptides](#)
- [Dot Blot](#)
- [Immunohistochemistry](#)
- [Immunofluorescence](#)
- [Immunoprecipitation](#)
- [Flow Cytometry](#)
- [Cell Culture](#)

Dectin-2 Polyclonal Antibody - Images



Dectin-2 Polyclonal Antibody - Background

Binds high-mannose carbohydrates in a Ca^{2+} -dependent manner (PubMed:28652405). Functional receptor for alpha-mannans on *C.albicans* hyphae. Plays an important role in the host defense against *C.albicans* infection by inducing TH17 cell differentiation. Recognizes also, in a mannose-dependent manner, allergens from house dust mite and fungi, by promoting cysteinyl leukotriene production. Recognizes soluble elements from the eggs of *Shistosoma mansoni* altering adaptive immune responses. Transduces signals through an Fc receptor gamma chain /FCER1G and Syk-CARD9-NF-kappa-B-dependent pathway (By similarity).