

EDA Polyclonal Antibody
Catalog # AP73886**Specification**

EDA Polyclonal Antibody - Product Information

Application	WB, IHC-P
Primary Accession	Q92838
Reactivity	Human, Mouse
Host	Rabbit
Clonality	Polyclonal

EDA Polyclonal Antibody - Additional Information**Gene ID** 1896**Other Names**

EDA; ED1; EDA2; Ectodysplasin-A; Ectodermal dysplasia protein; EDA protein

Dilution

WB~~Western Blot: 1/500 - 1/2000. IHC-p: 1:100-1:300. ELISA: 1/10000. Not yet tested in other applications.

IHC-P~~N/A

Format

Liquid in PBS containing 50% glycerol, 0.5% BSA and 0.09% (W/V) sodium azide.

Storage Conditions

-20°C

EDA Polyclonal Antibody - Protein Information**Name** EDA**Synonyms** ED1, EDA2**Function**

Cytokine which is involved in epithelial-mesenchymal signaling during morphogenesis of ectodermal organs. Functions as a ligand activating the DEATH-domain containing receptors EDAR and EDA2R (PubMed:<[a href="http://www.uniprot.org/citations/11039935" target="_blank">http://www.uniprot.org/citations/11039935](http://www.uniprot.org/citations/11039935)>11039935, PubMed:<[a href="http://www.uniprot.org/citations/27144394" target="_blank">http://www.uniprot.org/citations/27144394](http://www.uniprot.org/citations/27144394)>27144394, PubMed:<[a href="http://www.uniprot.org/citations/34582123" target="_blank">http://www.uniprot.org/citations/34582123](http://www.uniprot.org/citations/34582123)>34582123, PubMed:<[a href="http://www.uniprot.org/citations/8696334" target="_blank">http://www.uniprot.org/citations/8696334](http://www.uniprot.org/citations/8696334)>8696334). May also play a role in cell adhesion (By similarity).

Cellular Location

Cell membrane {ECO:0000250|UniProtKB:O54693}; Single-pass type II membrane protein {ECO:0000250|UniProtKB:O54693}

Tissue Location

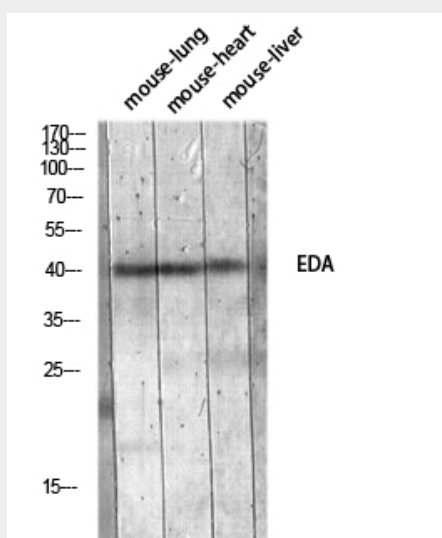
Not abundant; expressed in specific cell types of ectodermal (but not mesodermal) origin of keratinocytes, hair follicles, sweat glands. Also in adult heart, liver, muscle, pancreas, prostate, fetal liver, uterus, small intestine and umbilical cord {ECO:0000269|Ref.6}

EDA Polyclonal Antibody - Protocols

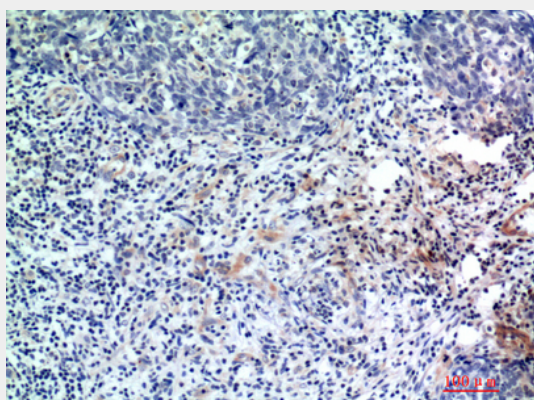
Provided below are standard protocols that you may find useful for product applications.

- [Western Blot](#)
- [Blocking Peptides](#)
- [Dot Blot](#)
- [Immunohistochemistry](#)
- [Immunofluorescence](#)
- [Immunoprecipitation](#)
- [Flow Cytometry](#)
- [Cell Culture](#)

EDA Polyclonal Antibody - Images



Western blot analysis of mouse-lung mouse-heart mouse-liver lysis using EDA antibody. Antibody was diluted at 1:1000. Secondary antibody was diluted at 1:20000



Immunohistochemical analysis of paraffin-embedded human-breast-cancer, antibody was diluted

at 1:200

EDA Polyclonal Antibody - Background

Cytokine which is involved in epithelial-mesenchymal signaling during morphogenesis of ectodermal organs. Functions as a ligand activating the DEATH-domain containing receptors EDAR and EDA2R (PubMed:8696334, PubMed:11039935, PubMed:27144394). May also play a role in cell adhesion (By similarity).