

**FKBP9 Antibody (N-term)**  
**Purified Rabbit Polyclonal Antibody (Pab)**  
**Catalog # AP7388a****Specification**

---

**FKBP9 Antibody (N-term) - Product Information**

Application	FC, IHC-P, WB,E
Primary Accession	<a href="#">O95302</a>
Other Accession	<a href="#">Q2KJC8</a>
Reactivity	Human, Mouse
Predicted	Bovine
Host	Rabbit
Clonality	Polyclonal
Isotype	Rabbit IgG
Calculated MW	63084
Antigen Region	51-80

**FKBP9 Antibody (N-term) - Additional Information****Gene ID** 11328**Other Names**

Peptidyl-prolyl cis-trans isomerase FKBP9, PPIase FKBP9, 63 kDa FK506-binding protein, 63 kDa FKBP, FKBP-63, FK506-binding protein 9, FKBP-9, Rotamase, FKBP9, FKBP60, FKBP63

**Target/Specificity**

This FKBP9 antibody is generated from rabbits immunized with a KLH conjugated synthetic peptide between 51-80 amino acids from the N-terminal region of human FKBP9.

**Dilution**

FC~~1:10~50

IHC-P~~1:50~100

WB~~1:1000

E~~Use at an assay dependent concentration.

**Format**

Purified polyclonal antibody supplied in PBS with 0.09% (W/V) sodium azide. This antibody is prepared by Saturated Ammonium Sulfate (SAS) precipitation followed by dialysis against PBS.

**Storage**

Maintain refrigerated at 2-8°C for up to 2 weeks. For long term storage store at -20°C in small aliquots to prevent freeze-thaw cycles.

**Precautions**

FKBP9 Antibody (N-term) is for research use only and not for use in diagnostic or therapeutic procedures.

**FKBP9 Antibody (N-term) - Protein Information**

**Name** FKBP9

**Synonyms** FKBP60, FKBP63

**Function** PPlases accelerate the folding of proteins during protein synthesis.

**Cellular Location**

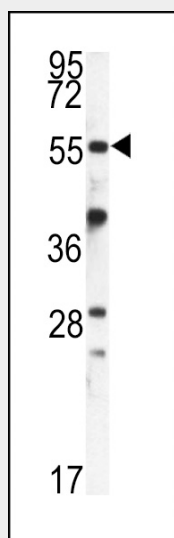
Endoplasmic reticulum {ECO:0000255|PROSITE- ProRule:PRU10138}

**FKBP9 Antibody (N-term) - Protocols**

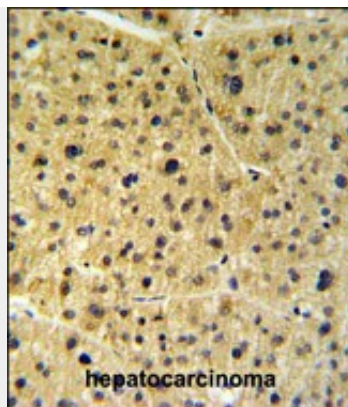
Provided below are standard protocols that you may find useful for product applications.

- [Western Blot](#)
- [Blocking Peptides](#)
- [Dot Blot](#)
- [Immunohistochemistry](#)
- [Immunofluorescence](#)
- [Immunoprecipitation](#)
- [Flow Cytometry](#)
- [Cell Culture](#)

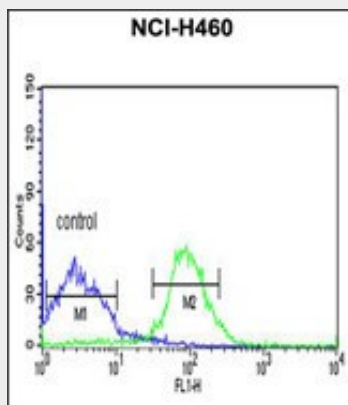
**FKBP9 Antibody (N-term) - Images**



Western blot analysis of FKBP9 antibody (N-term) (Cat.# AP7388a) in mouse kidney tissue lysates (35ug/lane). FKBP9 (arrow) was detected using the purified Pab.



FKBP9 Antibody (N-term) (Cat.# AP7388a) IHC analysis in formalin fixed and paraffin embedded human hepatocarcinoma followed by peroxidase conjugation of the secondary antibody and DAB staining. This data demonstrates the use of the FKBP9 Antibody (N-term) for immunohistochemistry. Clinical relevance has not been evaluated.



FKBP9 Antibody (N-term) (Cat. #AP7388a) flow cytometric analysis of NCI-H460 cells (right histogram) compared to a negative control cell (left histogram). FITC-conjugated goat-anti-rabbit secondary antibodies were used for the analysis.

#### **FKBP9 Antibody (N-term) - Background**

FKBP9 is a PPIase which accelerate the folding of proteins during protein synthesis.

#### **FKBP9 Antibody (N-term) - References**

Zhang,H., Nat. Biotechnol. 21 (6), 660-666 (2003)  
Patterson,C.E., Genomics 79 (6), 881-889 (2002)