

FKBP9 Antibody (C-term)
Purified Rabbit Polyclonal Antibody (Pab)
Catalog # AP7388B**Specification**

FKBP9 Antibody (C-term) - Product Information

Application	FC, WB, IHC-P,E
Primary Accession	O95302
Other Accession	O9Z247
Reactivity	Human
Predicted	Mouse
Host	Rabbit
Clonality	Polyclonal
Isotype	Rabbit IgG
Calculated MW	63084
Antigen Region	541-570

FKBP9 Antibody (C-term) - Additional Information**Gene ID** 11328**Other Names**

Peptidyl-prolyl cis-trans isomerase FKBP9, PPIase FKBP9, 63 kDa FK506-binding protein, 63 kDa FKBP, FKBP-63, FK506-binding protein 9, FKBP-9, Rotamase, FKBP9, FKBP60, FKBP63

Target/Specificity

This FKBP9 antibody is generated from rabbits immunized with a KLH conjugated synthetic peptide between 541-570 amino acids from the C-terminal region of human FKBP9.

Dilution

FC~~1:10~50

WB~~1:1000

IHC-P~~1:50~100

E~~Use at an assay dependent concentration.

Format

Purified polyclonal antibody supplied in PBS with 0.09% (W/V) sodium azide. This antibody is prepared by Saturated Ammonium Sulfate (SAS) precipitation followed by dialysis against PBS.

Storage

Maintain refrigerated at 2-8°C for up to 2 weeks. For long term storage store at -20°C in small aliquots to prevent freeze-thaw cycles.

Precautions

FKBP9 Antibody (C-term) is for research use only and not for use in diagnostic or therapeutic procedures.

FKBP9 Antibody (C-term) - Protein Information

Name FKBP9

Synonyms FKBP60, FKBP63

Function PPlases accelerate the folding of proteins during protein synthesis.

Cellular Location

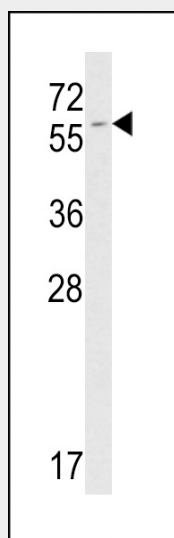
Endoplasmic reticulum {ECO:0000255|PROSITE- ProRule:PRU10138}

FKBP9 Antibody (C-term) - Protocols

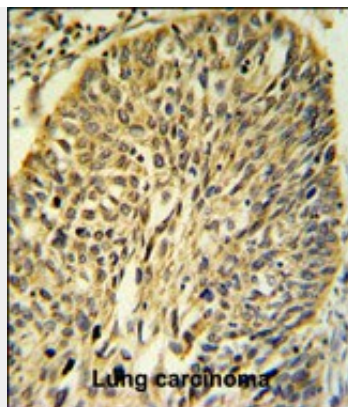
Provided below are standard protocols that you may find useful for product applications.

- [Western Blot](#)
- [Blocking Peptides](#)
- [Dot Blot](#)
- [Immunohistochemistry](#)
- [Immunofluorescence](#)
- [Immunoprecipitation](#)
- [Flow Cytometry](#)
- [Cell Culture](#)

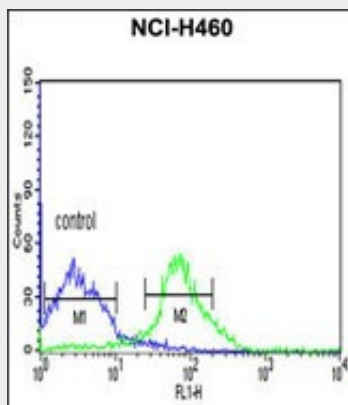
FKBP9 Antibody (C-term) - Images



Western blot analysis of FKBP9 antibody (C-term) (Cat.# AP7388b) in mouse NIH-3T3 tissue lysates (35ug/lane). FKBP9 (arrow) was detected using the purified Pab.



FKBP9 Antibody (C-term) (Cat.# AP7388b) IHC analysis in formalin fixed and paraffin embedded human Lung carcinoma followed by peroxidase conjugation of the secondary antibody and DAB staining. This data demonstrates the use of the FKBP9 Antibody (C-term) for immunohistochemistry. Clinical relevance has not been evaluated.



FKBP9 Antibody (C-term) (Cat. #AP7388b) flow cytometric analysis of NCI-H460 cells (right histogram) compared to a negative control cell (left histogram). FITC-conjugated goat-anti-rabbit secondary antibodies were used for the analysis.

FKBP9 Antibody (C-term) - Background

FKBP9 is a PPIase which accelerate the folding of proteins during protein synthesis.

FKBP9 Antibody (C-term) - References

Zhang,H., Nat. Biotechnol. 21 (6), 660-666 (2003)
Patterson,C.E., Genomics 79 (6), 881-889 (2002)