

**CD56 Polyclonal Antibody**  
**Catalog # AP73891****Specification**

---

**CD56 Polyclonal Antibody - Product Information**

Application	WB, IHC-P
Primary Accession	<a href="#">P13591</a>
Reactivity	Human
Host	Rabbit
Clonality	Polyclonal

**CD56 Polyclonal Antibody - Additional Information****Gene ID** 4684**Other Names**

NCAM1; NCAM; Neural cell adhesion molecule 1; N-CAM-1; NCAM-1; CD56

**Dilution**

WB~~Western Blot: 1/500 - 1/2000. IHC-p: 1:100-1:300. ELISA: 1/10000. Not yet tested in other applications.

IHC-P~~N/A

**Format**

Liquid in PBS containing 50% glycerol, 0.5% BSA and 0.09% (W/V) sodium azide.

**Storage Conditions**

-20°C

**CD56 Polyclonal Antibody - Protein Information****Name** NCAM1 ([HGNC:7656](#))**Synonyms** NCAM**Function**

This protein is a cell adhesion molecule involved in neuron- neuron adhesion, neurite fasciculation, outgrowth of neurites, etc. (Microbial infection) Acts as a receptor for Zika virus.

**Cellular Location**

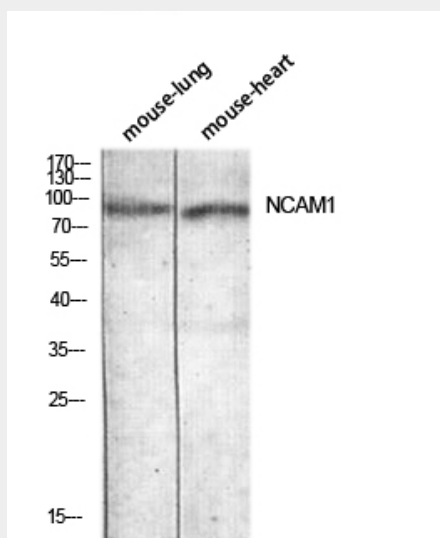
[Isoform 1]: Cell membrane; Single-pass type I membrane protein [Isoform 3]: Cell membrane; Lipid-anchor, GPI- anchor [Isoform 5]: Secreted.

**CD56 Polyclonal Antibody - Protocols**

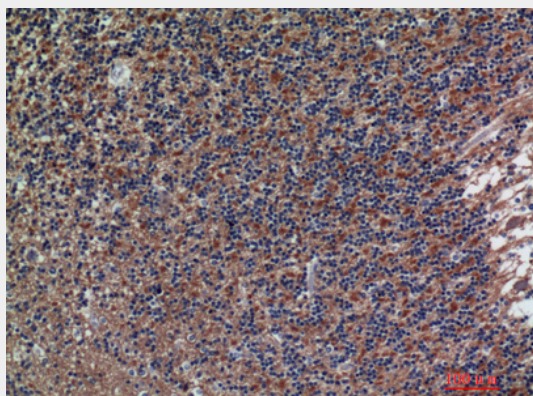
Provided below are standard protocols that you may find useful for product applications.

- [Western Blot](#)
- [Blocking Peptides](#)
- [Dot Blot](#)
- [Immunohistochemistry](#)
- [Immunofluorescence](#)
- [Immunoprecipitation](#)
- [Flow Cytometry](#)
- [Cell Culture](#)

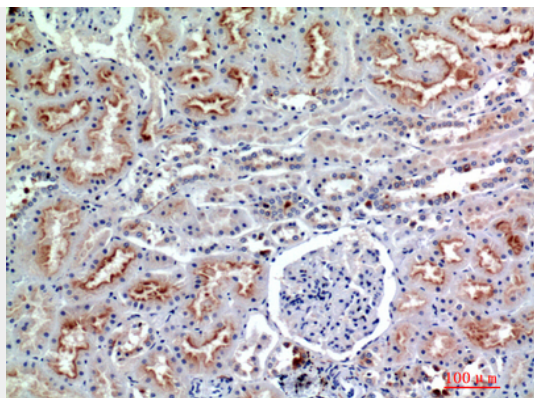
#### CD56 Polyclonal Antibody - Images



Western blot analysis of mouse-lung mouse-heart lysis using NCAM1 antibody. Antibody was diluted at 1:1000. Secondary antibody was diluted at 1:20000



Immunohistochemical analysis of paraffin-embedded human-brain, antibody was diluted at 1:200



Immunohistochemical analysis of paraffin-embedded human-kidney, antibody was diluted at 1:200

Image not found : 202004/c30367wb42457.jpg

Western Blot analysis of Hela cells using Antibody diluted at 1:1000. Secondary antibody was diluted at 1:20000

#### **CD56 Polyclonal Antibody - Background**

This protein is a cell adhesion molecule involved in neuron-neuron adhesion, neurite fasciculation, outgrowth of neurites, etc.