

CD72 Polyclonal Antibody
Catalog # AP73892**Specification**

CD72 Polyclonal Antibody - Product Information

Application	WB, IHC-P
Primary Accession	P21854
Reactivity	Human
Host	Rabbit
Clonality	Polyclonal

CD72 Polyclonal Antibody - Additional Information**Gene ID** 971**Other Names**

CD72; B-cell differentiation antigen CD72; Lyb-2; CD72

Dilution

WB~~IHC-p: 100-300. Western Blot: 1/500 - 1/2000. ELISA: 1/10000. Not yet tested in other applications.

IHC-P~~N/A

Format

Liquid in PBS containing 50% glycerol, 0.5% BSA and 0.09% (W/V) sodium azide.

Storage Conditions

-20°C

CD72 Polyclonal Antibody - Protein Information**Name** CD72**Function**

Co-receptor of B cell receptor (BCR) that plays both positive and negative roles on B-cell functions. Recognizes the Sm/ribonucleoprotein (RNP) self-antigen ligand, and coligation of CD72 and BCR inhibits BCR signaling. Mechanistically, ligand binding leads to the recruitment of PTPN6/SHP-1 to the BCR complex which is inhibitory to BCR signaling. Also acts as a ligand for CD5 and thereby plays a critical role in maintaining regulatory T and B-cell homeostasis.

Cellular Location

Membrane; Single-pass type II membrane protein.

Tissue Location

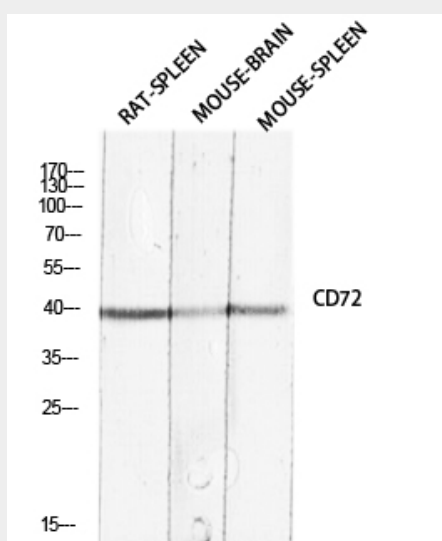
Pre-B-cells and B-cells but not terminally differentiated plasma cells

CD72 Polyclonal Antibody - Protocols

Provided below are standard protocols that you may find useful for product applications.

- [Western Blot](#)
- [Blocking Peptides](#)
- [Dot Blot](#)
- [Immunohistochemistry](#)
- [Immunofluorescence](#)
- [Immunoprecipitation](#)
- [Flow Cytometry](#)
- [Cell Culture](#)

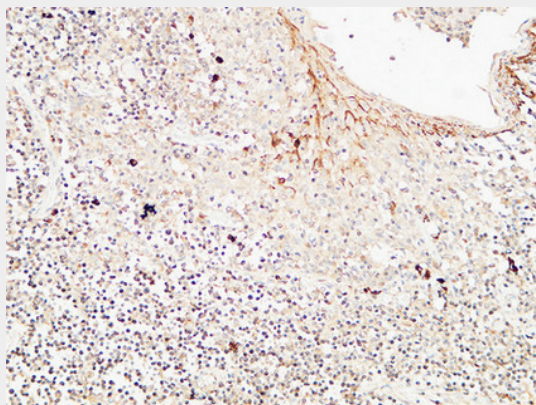
CD72 Polyclonal Antibody - Images



Western blot analysis of RAT-SPLEEN MOUSE-BRAIN MOUSE-SPLEEN lysis using CD72 antibody. Antibody was diluted at 1:2000. Secondary antibody was diluted at 1:20000

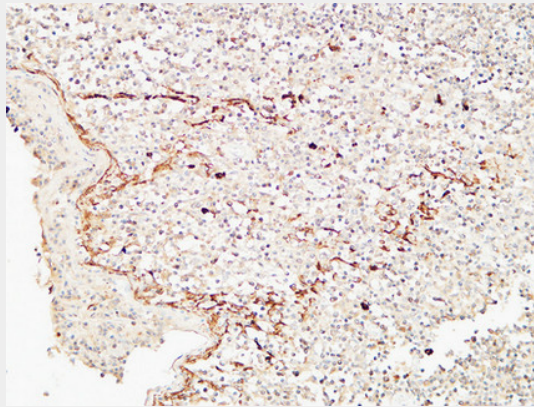
Image not found : 202004/c30381wb42457.jpg

Western Blot analysis of various cells using Antibody diluted at 1:1000. Secondary antibody was diluted at 1:20000

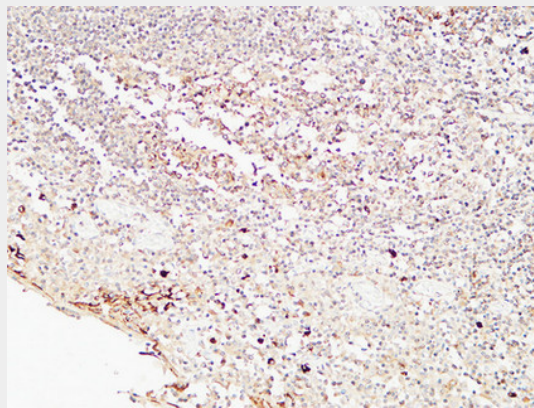


Immunohistochemical analysis of paraffin-embedded Human Amygdala. 1, Antibody was diluted at 1:100(4°,overnight). 2, High-pressure and temperature EDTA, pH8.0 was used for antigen

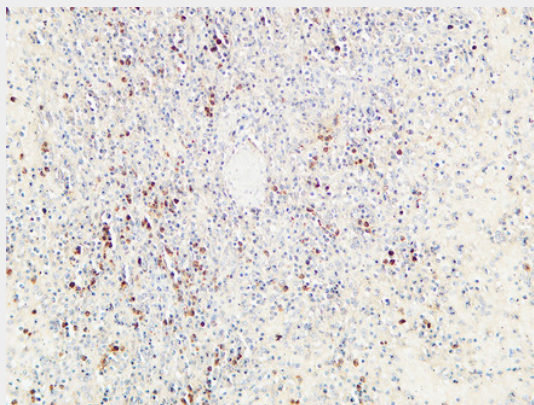
retrieval. 3,Secondary antibody was diluted at 1:200(room temperature, 30min).



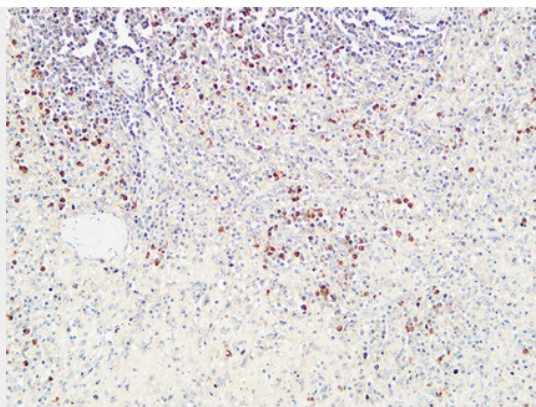
Immunohistochemical analysis of paraffin-embedded Human Amygdala. 1, Antibody was diluted at 1:100(4°,overnight). 2, High-pressure and temperature EDTA, pH8.0 was used for antigen retrieval. 3,Secondary antibody was diluted at 1:200(room temperature, 30min).



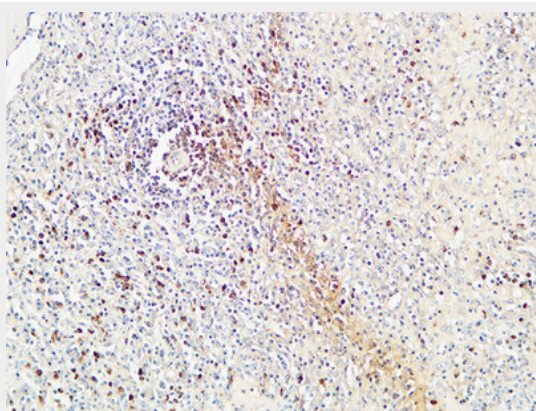
Immunohistochemical analysis of paraffin-embedded Human Amygdala. 1, Antibody was diluted at 1:100(4°,overnight). 2, High-pressure and temperature EDTA, pH8.0 was used for antigen retrieval. 3,Secondary antibody was diluted at 1:200(room temperature, 30min).



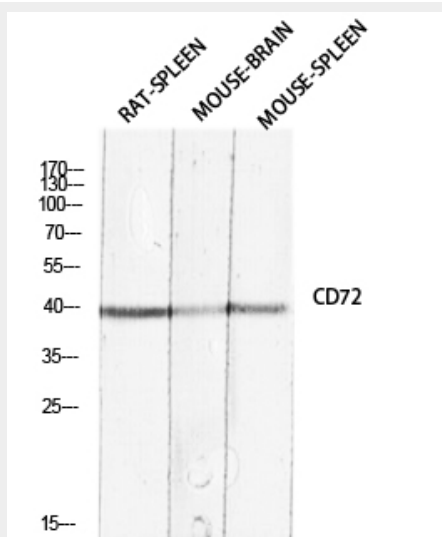
Immunohistochemical analysis of paraffin-embedded Human spleen. 1, Antibody was diluted at 1:100(4°,overnight). 2, High-pressure and temperature EDTA, pH8.0 was used for antigen retrieval. 3,Secondary antibody was diluted at 1:200(room temperature, 30min).



Immunohistochemical analysis of paraffin-embedded Human spleen. 1, Antibody was diluted at 1:100(4°,overnight). 2, High-pressure and temperature EDTA, pH8.0 was used for antigen retrieval. 3,Secondary antibody was diluted at 1:200(room temperature, 30min).



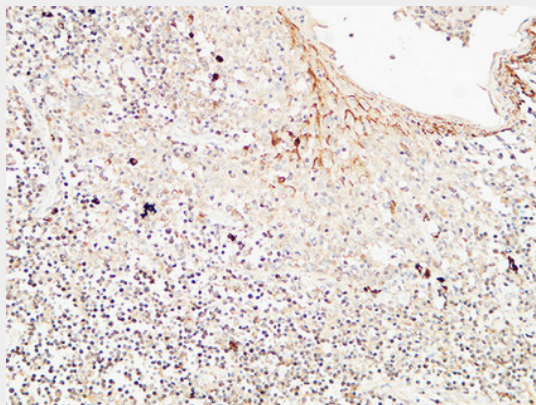
Immunohistochemical analysis of paraffin-embedded Human spleen. 1, Antibody was diluted at 1:100(4°,overnight). 2, High-pressure and temperature EDTA, pH8.0 was used for antigen retrieval. 3,Secondary antibody was diluted at 1:200(room temperature, 30min).



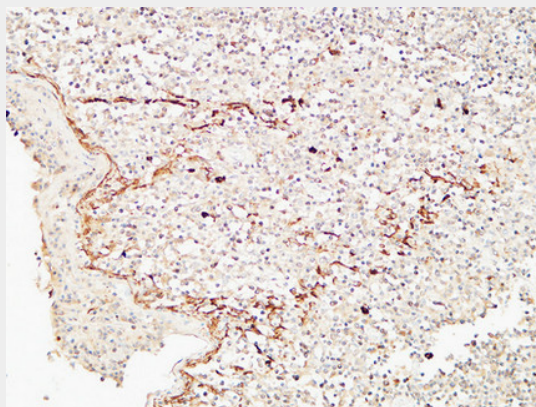
Western blot analysis of RAT-SPLEEN MOUSE-BRAIN MOUSE-SPLEEN lysis using CD72 antibody. Antibody was diluted at 1:2000. Secondary antibody was diluted at 1:20000

Image not found : 202004/c30381wb42457.jpg

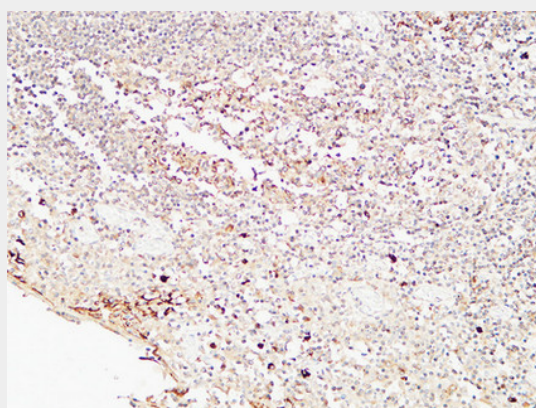
Western Blot analysis of various cells using Antibody diluted at 1:1000. Secondary antibody was diluted at 1:20000



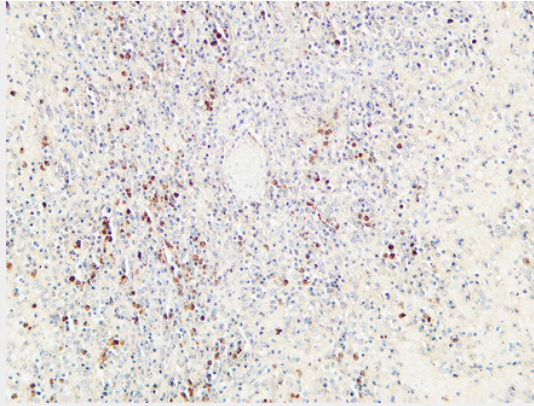
Immunohistochemical analysis of paraffin-embedded Human Amygdala. 1, Antibody was diluted at 1:100(4°,overnight). 2, High-pressure and temperature EDTA, pH8.0 was used for antigen retrieval. 3,Secondary antibody was diluted at 1:200(room temperature, 30min).



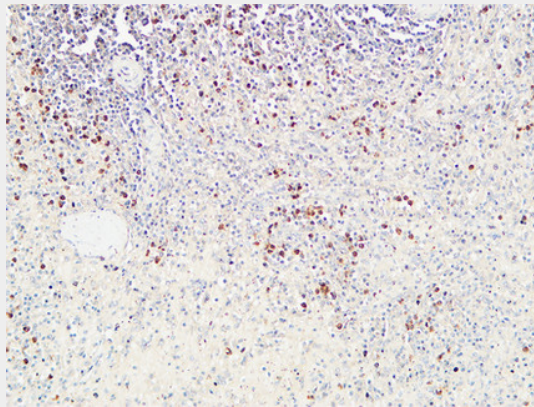
Immunohistochemical analysis of paraffin-embedded Human Amygdala. 1, Antibody was diluted at 1:100(4°,overnight). 2, High-pressure and temperature EDTA, pH8.0 was used for antigen retrieval. 3,Secondary antibody was diluted at 1:200(room temperature, 30min).



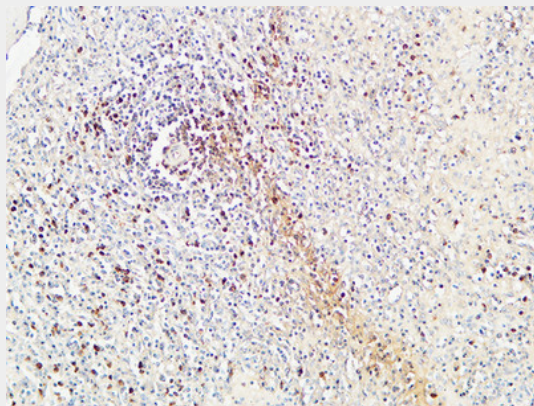
Immunohistochemical analysis of paraffin-embedded Human Amygdala. 1, Antibody was diluted at 1:100(4°,overnight). 2, High-pressure and temperature EDTA, pH8.0 was used for antigen retrieval. 3,Secondary antibody was diluted at 1:200(room temperature, 30min).



Immunohistochemical analysis of paraffin-embedded Human spleen. 1, Antibody was diluted at 1:100(4°,overnight). 2, High-pressure and temperature EDTA, pH8.0 was used for antigen retrieval. 3,Secondary antibody was diluted at 1:200(room temperature, 30min).



Immunohistochemical analysis of paraffin-embedded Human spleen. 1, Antibody was diluted at 1:100(4°,overnight). 2, High-pressure and temperature EDTA, pH8.0 was used for antigen retrieval. 3,Secondary antibody was diluted at 1:200(room temperature, 30min).



Immunohistochemical analysis of paraffin-embedded Human spleen. 1, Antibody was diluted at 1:100(4°,overnight). 2, High-pressure and temperature EDTA, pH8.0 was used for antigen retrieval. 3,Secondary antibody was diluted at 1:200(room temperature, 30min).

CD72 Polyclonal Antibody - Background

Plays a role in B-cell proliferation and differentiation.