

CD296 Polyclonal Antibody
Catalog # AP73900**Specification**

CD296 Polyclonal Antibody - Product Information

Application	WB
Primary Accession	P52961
Reactivity	Human
Host	Rabbit
Clonality	Polyclonal

CD296 Polyclonal Antibody - Additional Information**Gene ID** 417**Other Names**

ART1; GPI-linked NAD(P)(+)-arginine ADP-ribosyltransferase 1; ADP-ribosyltransferase C2 and C3 toxin-like 1; ARTC1; Mono(ADP-ribosyl)transferase 1; CD296

Dilution

WB~~Western Blot: 1/500 - 1/2000. ELISA: 1/10000. Not yet tested in other applications.

Format

Liquid in PBS containing 50% glycerol, 0.5% BSA and 0.09% (W/V) sodium azide.

Storage Conditions

-20°C

CD296 Polyclonal Antibody - Protein Information**Name** ART1**Function**

Has ADP-ribosyltransferase activity toward GLP1R.

Cellular Location

Sarcoplasmic reticulum membrane; Lipid-anchor, GPI-anchor

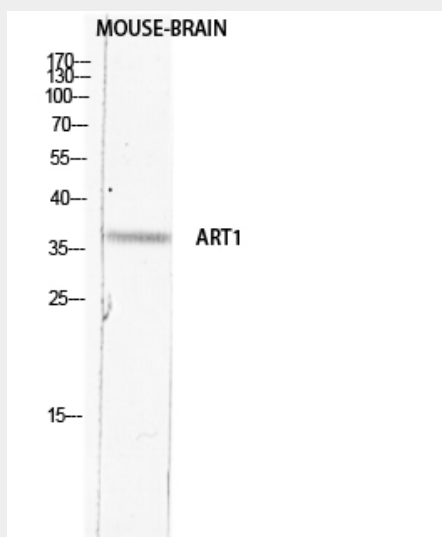
CD296 Polyclonal Antibody - Protocols

Provided below are standard protocols that you may find useful for product applications.

- [Western Blot](#)
- [Blocking Peptides](#)
- [Dot Blot](#)
- [Immunohistochemistry](#)

- [Immunofluorescence](#)
- [Immunoprecipitation](#)
- [Flow Cytometry](#)
- [Cell Culture](#)

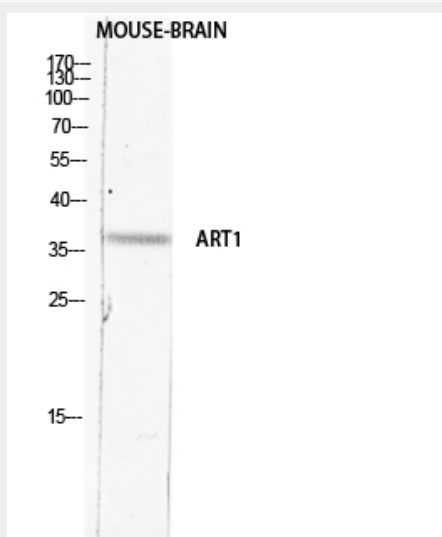
CD296 Polyclonal Antibody - Images



Western blot analysis of MOUSE-BRAIN lysis using ART1 antibody. Antibody was diluted at 1:2000. Secondary antibody was diluted at 1:20000

Image not found : 202004/c30542wb42457.jpg

Western Blot analysis of various cells using Antibody diluted at 1:1000. Secondary antibody was diluted at 1:20000



Western blot analysis of MOUSE-BRAIN lysis using ART1 antibody. Antibody was diluted at 1:2000. Secondary antibody was diluted at 1:20000

Image not found : 202004/c30542wb42457.jpg

Western Blot analysis of various cells using Antibody diluted at 1:1000. Secondary antibody was

diluted at 1:20000

CD296 Polyclonal Antibody - Background

Has ADP-ribosyltransferase activity toward GLP1R.