

SCGF Polyclonal Antibody
Catalog # AP73902**Specification**

SCGF Polyclonal Antibody - Product Information

Application	WB, IHC-P
Primary Accession	Q9Y240
Reactivity	Human, Mouse
Host	Rabbit
Clonality	Polyclonal

SCGF Polyclonal Antibody - Additional Information**Gene ID** 6320**Other Names**

CLEC11A; CLECSF3; LSLCL; SCGF; C-type lectin domain family 11 member A; C-type lectin superfamily member 3; Lymphocyte secreted C-type lectin; Stem cell growth factor; p47

Dilution

WB~~Western Blot: 1/500 - 1/2000. IHC-p: 1:100-1:300. ELISA: 1/10000. Not yet tested in other applications.

IHC-P~~N/A

Format

Liquid in PBS containing 50% glycerol, 0.5% BSA and 0.09% (W/V) sodium azide.

Storage Conditions

-20°C

SCGF Polyclonal Antibody - Protein Information**Name** CLEC11A**Synonyms** CLECSF3, LSLCL, SCGF**Function**

Promotes osteogenesis by stimulating the differentiation of mesenchymal progenitors into mature osteoblasts (PubMed:27976999). Important for repair and maintenance of adult bone (By similarity).

Cellular Location

Cytoplasm. Secreted

Tissue Location

Expressed in skeletal tissues including bone marrow, chondrocytes, primary ossification center-associated cells, the perichondrium and periosteum. Lower levels of expression were

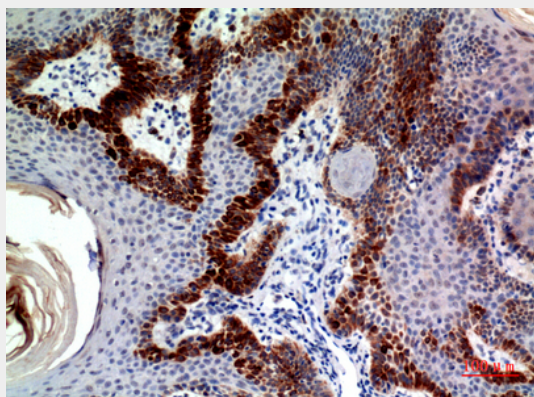
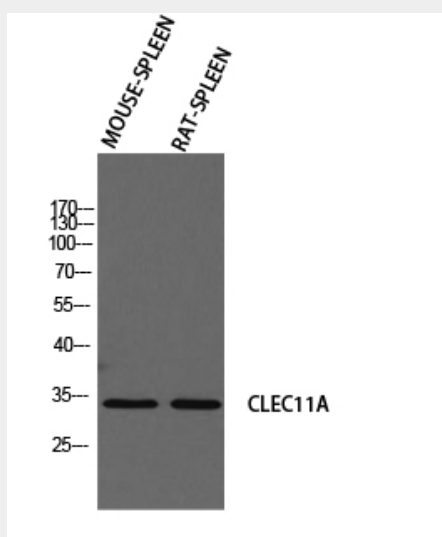
detected in spleen, thymus, appendix and fetal liver

SCGF Polyclonal Antibody - Protocols

Provided below are standard protocols that you may find useful for product applications.

- [Western Blot](#)
- [Blocking Peptides](#)
- [Dot Blot](#)
- [Immunohistochemistry](#)
- [Immunofluorescence](#)
- [Immunoprecipitation](#)
- [Flow Cytometry](#)
- [Cell Culture](#)

SCGF Polyclonal Antibody - Images



SCGF Polyclonal Antibody - Background

Promotes osteogenesis by stimulating the differentiation of mesenchymal progenitors into mature osteoblasts (PubMed:27976999). Important for repair and maintenance of adult bone (By

similarity).