

**PGLYRP1 Polyclonal Antibody**  
**Catalog # AP73917****Specification****PGLYRP1 Polyclonal Antibody - Product Information**

Application	WB
Primary Accession	<a href="#">O75594</a>
Reactivity	Human
Host	Rabbit
Clonality	Polyclonal

**PGLYRP1 Polyclonal Antibody - Additional Information****Gene ID** 8993**Other Names**

PGLYRP1; PGLYRP; PGRP; TNFSF3L; SBBI68; Peptidoglycan recognition protein 1; Peptidoglycan recognition protein short; PGRP-S

**Dilution**

WB~~Western Blot: 1/500 - 1/2000. ELISA: 1/10000. Not yet tested in other applications.

**Format**

Liquid in PBS containing 50% glycerol, 0.5% BSA and 0.09% (W/V) sodium azide.

**Storage Conditions**

-20°C

**PGLYRP1 Polyclonal Antibody - Protein Information****Name** PGLYRP1**Synonyms** PGLYRP, PGRP, TNFSF3L**Function**

Innate immunity protein that plays several important functions in antimicrobial and antitumor defense systems. Acts as a pattern receptor that binds to murein peptidoglycans (PGN) of Gram-positive bacteria and thus provides bactericidal activity (PubMed:<a href="http://www.uniprot.org/citations/9707603" target="\_blank">9707603</a>). Forms an equimolar complex with heat shock protein HSPA1A and induces programmed cell death through apoptosis and necroptosis in tumor cell lines by activating the TNFR1 receptor on the target cell membrane (PubMed:<a href="http://www.uniprot.org/citations/21247889" target="\_blank">21247889</a>, PubMed:<a href="http://www.uniprot.org/citations/26183779" target="\_blank">26183779</a>). In addition, acts in complex with the Ca(2+)-binding protein S100A4 as a chemoattractant able to induce lymphocyte movement (PubMed:<a href="http://www.uniprot.org/citations/26654597" target="\_blank">26654597</a>). Mechanistically, this complex acts as a ligand of the chemotactic receptors CCR5 and CXCR3 which are present on the cells of the immune system (PubMed:<a

href="http://www.uniprot.org/citations/30713770" target="\_blank">30713770</a>). Promotes also the activation of lymphocytes that become able to kill virus-infected cells as well as tumor cells by modulating the spectrum of their target-cell specificity (PubMed:<a href="http://www.uniprot.org/citations/29083508" target="\_blank">29083508</a>, PubMed:<a href="http://www.uniprot.org/citations/28977785" target="\_blank">28977785</a>). Induction of cytotoxicity on monocyte surface requires interaction with TREM1 receptor (PubMed:<a href="http://www.uniprot.org/citations/28977785" target="\_blank">28977785</a>, PubMed:<a href="http://www.uniprot.org/citations/25595774" target="\_blank">25595774</a>).

#### Cellular Location

Secreted. Cytoplasmic granule

#### Tissue Location

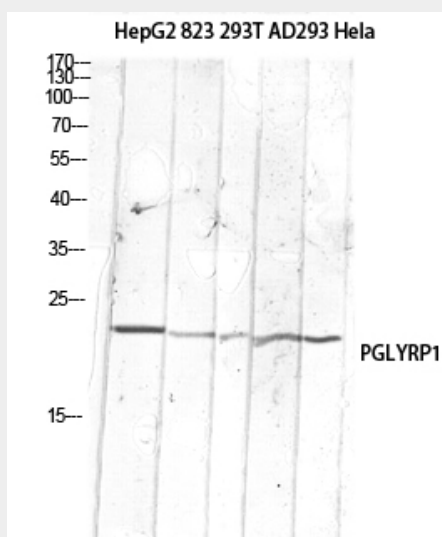
Highly expressed in bone marrow. Weak expression found in kidney, liver, small intestine, spleen, thymus, peripheral leukocyte, lung, fetal spleen and neutrophils

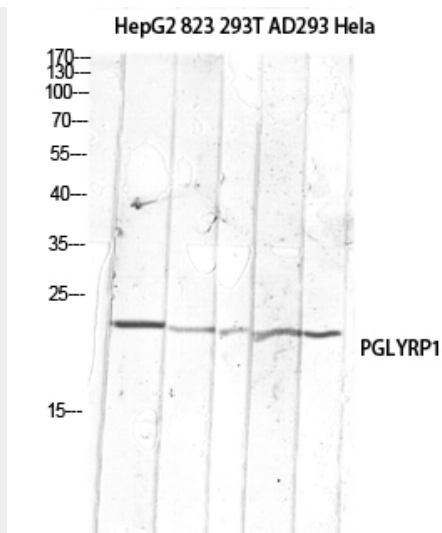
### PGLYRP1 Polyclonal Antibody - Protocols

Provided below are standard protocols that you may find useful for product applications.

- [Western Blot](#)
- [Blocking Peptides](#)
- [Dot Blot](#)
- [Immunohistochemistry](#)
- [Immunofluorescence](#)
- [Immunoprecipitation](#)
- [Flow Cytometry](#)
- [Cell Culture](#)

### PGLYRP1 Polyclonal Antibody - Images





### **PGLYRP1 Polyclonal Antibody - Background**

Pattern receptor that binds to murein peptidoglycans (PGN) of Gram-positive bacteria. Has bactericidal activity towards Gram-positive bacteria. May kill Gram-positive bacteria by interfering with peptidoglycan biosynthesis. Binds also to Gram-negative bacteria, and has bacteriostatic activity towards Gram-negative bacteria. Plays a role in innate immunity.