

CD238 Polyclonal Antibody
Catalog # AP73931**Specification**

CD238 Polyclonal Antibody - Product Information

Application	WB
Primary Accession	P23276
Reactivity	Human
Host	Rabbit
Clonality	Polyclonal

CD238 Polyclonal Antibody - Additional Information**Gene ID** 3792**Other Names**

Kell blood group, metallo-endopeptidase

Dilution

WB~~WB 1:500-2000, ELISA 1:10000-20000

Format

Liquid in PBS containing 50% glycerol, 0.5% BSA and 0.09% (W/V) sodium azide.

Storage Conditions

-20°C

CD238 Polyclonal Antibody - Protein Information**Name** KEL**Function**

Zinc endopeptidase with endothelin-3-converting enzyme activity. Cleaves EDN1, EDN2 and EDN3, with a marked preference for EDN3.

Cellular Location

Cell membrane; Single-pass type II membrane protein. Note=Spans the erythrocyte membrane, and is attached to the underlying cytoskeleton

Tissue Location

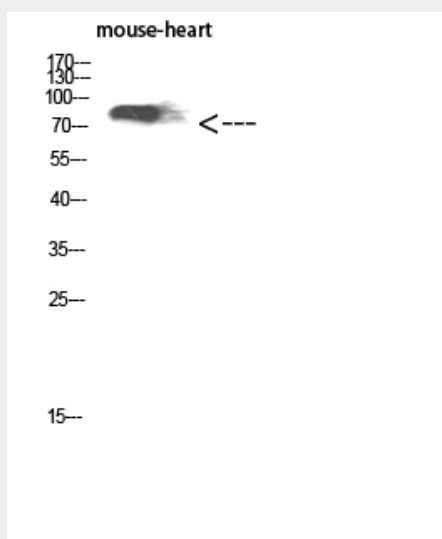
Expressed at high levels in erythrocytes and testis (in Sertoli cells), and, at lower levels, in skeletal muscle, tonsils (in follicular dendritic cells), lymph node, spleen and appendix (at protein level). Also expressed in many adult and fetal nonerythroid tissues, including brain, spleen, lymph nodes and bone marrow

CD238 Polyclonal Antibody - Protocols

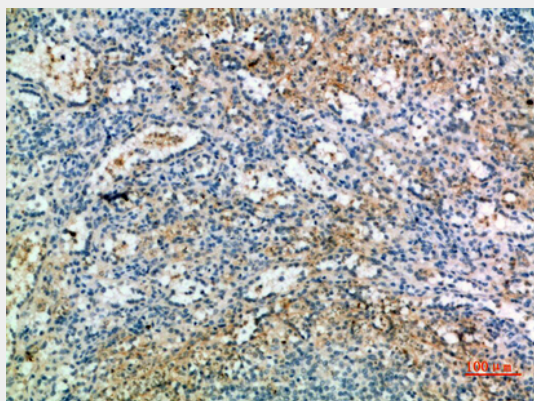
Provided below are standard protocols that you may find useful for product applications.

- [Western Blot](#)
- [Blocking Peptides](#)
- [Dot Blot](#)
- [Immunohistochemistry](#)
- [Immunofluorescence](#)
- [Immunoprecipitation](#)
- [Flow Cytometry](#)
- [Cell Culture](#)

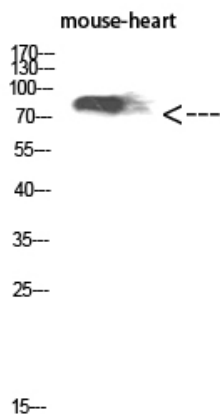
CD238 Polyclonal Antibody - Images



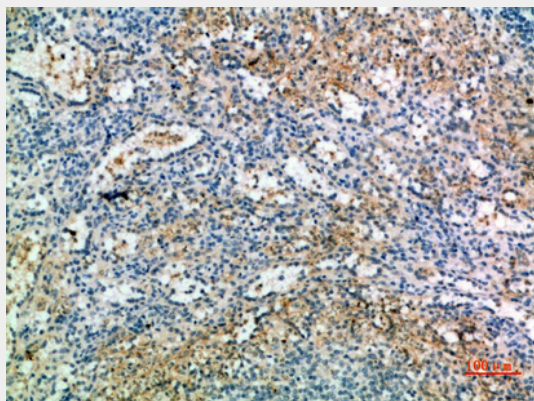
Western Blot analysis of mouse-heart cells using CD238 Polyclonal Antibody diluted at 1:1000. Secondary antibody was diluted at 1:20000



Immunohistochemical analysis of paraffin-embedded human-spleen, antibody was diluted at 1:200



Western Blot analysis of mouse-heart cells using CD238 Polyclonal Antibody diluted at 1:1000. Secondary antibody was diluted at 1:20000



Immunohistochemical analysis of paraffin-embedded human-spleen, antibody was diluted at 1:200

CD238 Polyclonal Antibody - Background

Zinc endopeptidase with endothelin-3-converting enzyme activity. Cleaves EDN1, EDN2 and EDN3, with a marked preference for EDN3.