

**BMP-10 Polyclonal Antibody**  
**Catalog # AP73933****Specification**

---

**BMP-10 Polyclonal Antibody - Product Information**

Application	WB
Primary Accession	<a href="#">O95393</a>
Reactivity	Human, Mouse, Rat
Host	Rabbit
Clonality	Polyclonal

**BMP-10 Polyclonal Antibody - Additional Information****Gene ID** 27302**Other Names**

bone morphogenetic protein 10

**Dilution**

WB~~WB 1:500-2000, ELISA 1:10000-20000

**Format**

Liquid in PBS containing 50% glycerol, 0.5% BSA and 0.09% (W/V) sodium azide.

**Storage Conditions**

-20°C

**BMP-10 Polyclonal Antibody - Protein Information****Name** BMP10**Function**

Required for maintaining the proliferative activity of embryonic cardiomyocytes by preventing premature activation of the negative cell cycle regulator CDKN1C/p57KIP and maintaining the required expression levels of cardiogenic factors such as MEF2C and NKX2-5. Acts as a ligand for ACVRL1/ALK1, BMPR1A/ALK3 and BMPR1B/ALK6, leading to activation of SMAD1, SMAD5 and SMAD8 transcription factors. Inhibits endothelial cell migration and growth. May reduce cell migration and cell matrix adhesion in breast cancer cell lines.

**Cellular Location**

Secreted.

**Tissue Location**

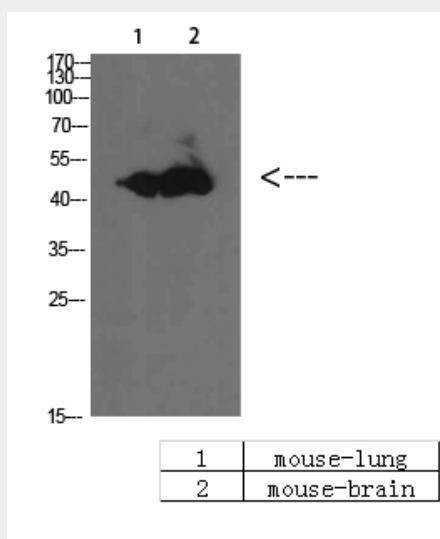
Detected in mammary epithelia (at protein level).

**BMP-10 Polyclonal Antibody - Protocols**

Provided below are standard protocols that you may find useful for product applications.

- [Western Blot](#)
- [Blocking Peptides](#)
- [Dot Blot](#)
- [Immunohistochemistry](#)
- [Immunofluorescence](#)
- [Immunoprecipitation](#)
- [Flow Cytometry](#)
- [Cell Culture](#)

#### **BMP-10 Polyclonal Antibody - Images**



#### **BMP-10 Polyclonal Antibody - Background**

Required for maintaining the proliferative activity of embryonic cardiomyocytes by preventing premature activation of the negative cell cycle regulator CDKN1C/p57KIP and maintaining the required expression levels of cardiogenic factors such as MEF2C and NKX2-5. Acts as a ligand for ACVRL1/ALK1, BMPR1A/ALK3 and BMPR1B/ALK6, leading to activation of SMAD1, SMAD5 and SMAD8 transcription factors. Inhibits endothelial cell migration and growth. May reduce cell migration and cell matrix adhesion in breast cancer cell lines.