

**GABARAP Polyclonal Antibody**  
**Catalog # AP73947****Specification**

---

**GABARAP Polyclonal Antibody - Product Information**

Application	WB
Primary Accession	<a href="#">P60520</a>
Reactivity	Human, Mouse, Rat
Host	Rabbit
Clonality	Polyclonal

**GABARAP Polyclonal Antibody - Additional Information****Gene ID** 11345**Other Names**

GABA(A) receptor-associated protein-like 2

**Dilution**

WB~~WB 1:500-2000, ELISA 1:10000-20000

**Format**

Liquid in PBS containing 50% glycerol, 0.5% BSA and 0.09% (W/V) sodium azide.

**Storage Conditions**

-20°C

**GABARAP Polyclonal Antibody - Protein Information****Name** GABARAPL2 ([HGNC:13291](#))**Synonyms** FLC3A, GEF2**Function**

Ubiquitin-like modifier involved in intra-Golgi traffic (By similarity). Modulates intra-Golgi transport through coupling between NSF activity and SNAREs activation (By similarity). It first stimulates the ATPase activity of NSF which in turn stimulates the association with GOSR1 (By similarity). Involved in autophagy (PubMed:<a href="http://www.uniprot.org/citations/20418806" target="\_blank">20418806</a>, PubMed:<a href="http://www.uniprot.org/citations/23209295" target="\_blank">23209295</a>). Plays a role in mitophagy which contributes to regulate mitochondrial quantity and quality by eliminating the mitochondria to a basal level to fulfill cellular energy requirements and preventing excess ROS production (PubMed:<a href="http://www.uniprot.org/citations/20418806" target="\_blank">20418806</a>, PubMed:<a href="http://www.uniprot.org/citations/23209295" target="\_blank">23209295</a>). Whereas LC3s are involved in elongation of the phagophore membrane, the GABARAP/GATE-16 subfamily is essential for a later stage in autophagosome maturation (PubMed:<a href="http://www.uniprot.org/citations/20418806" target="\_blank">20418806</a>, PubMed:<a href="http://www.uniprot.org/citations/23209295" target="\_blank">23209295</a>).

**Cellular Location**

Cytoplasmic vesicle, autophagosome. Endoplasmic reticulum membrane. Golgi apparatus  
{ECO:0000250|UniProtKB:P60519}

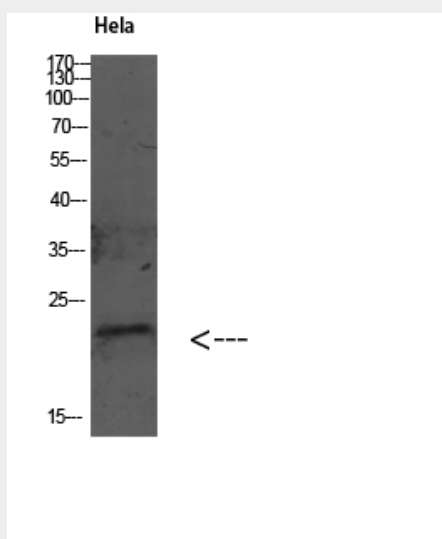
**Tissue Location**

Ubiquitous. Expressed at high levels in the brain, heart, prostate, ovary, spleen and skeletal muscle. Expressed at very low levels in lung, thymus and small intestine

**GABARAP Polyclonal Antibody - Protocols**

Provided below are standard protocols that you may find useful for product applications.

- [Western Blot](#)
- [Blocking Peptides](#)
- [Dot Blot](#)
- [Immunohistochemistry](#)
- [Immunofluorescence](#)
- [Immunoprecipitation](#)
- [Flow Cytometry](#)
- [Cell Culture](#)

**GABARAP Polyclonal Antibody - Images****GABARAP Polyclonal Antibody - Background**

Ubiquitin-like modifier involved in intra-Golgi traffic. Modulates intra-Golgi transport through coupling between NSF activity and SNAREs activation. It first stimulates the ATPase activity of NSF which in turn stimulates the association with GOSR1 (By similarity). Involved in autophagy. Plays a role in mitophagy which contributes to regulate mitochondrial quantity and quality by eliminating the mitochondria to a basal level to fulfill cellular energy requirements and preventing excess ROS production. Whereas LC3s are involved in elongation of the phagophore membrane, the GABARAP/GATE-16 subfamily is essential for a later stage in autophagosome maturation.