

ELF5 Antibody (Center)
Purified Rabbit Polyclonal Antibody (Pab)
Catalog # AP7394C**Specification**

ELF5 Antibody (Center) - Product Information

Application	WB,E
Primary Accession	Q9UKW6
Other Accession	Q8VDK3 , Q58DT0
Reactivity	Human, Mouse
Predicted	Bovine
Host	Rabbit
Clonality	Polyclonal
Isotype	Rabbit IgG
Antigen Region	179-207

ELF5 Antibody (Center) - Additional Information**Gene ID** 2001**Other Names**

ETS-related transcription factor Elf-5, E74-like factor 5, Epithelium-restricted ESE-1-related Ets factor, Epithelium-specific Ets transcription factor 2, ESE-2, ELF5, ESE2

Target/Specificity

This ELF5 antibody is generated from rabbits immunized with a KLH conjugated synthetic peptide between 179-207 amino acids from the Central region of human ELF5.

Dilution

WB~~1:1000

Format

Purified polyclonal antibody supplied in PBS with 0.09% (W/V) sodium azide. This antibody is prepared by Saturated Ammonium Sulfate (SAS) precipitation followed by dialysis against PBS.

Storage

Maintain refrigerated at 2-8°C for up to 2 weeks. For long term storage store at -20°C in small aliquots to prevent freeze-thaw cycles.

Precautions

ELF5 Antibody (Center) is for research use only and not for use in diagnostic or therapeutic procedures.

ELF5 Antibody (Center) - Protein Information**Name** ELF5**Synonyms** ESE2

Function Transcriptionally activator that may play a role in regulating the later stages of keratinocytes terminal differentiation.

Cellular Location

Nucleus {ECO:0000255|PROSITE-ProRule:PRU00237}.

Tissue Location

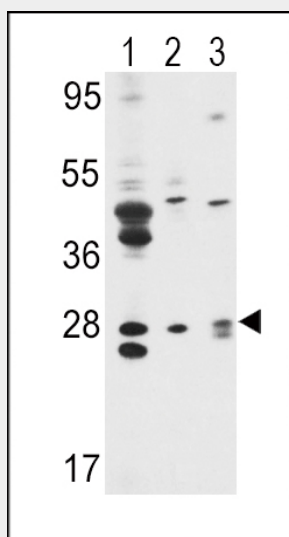
Expressed exclusively in tissues with a high content of epithelial cells. Highly expressed in salivary gland, mammary gland, kidney and prostate. Weakly expressed in placenta and lung. Isoform 1 and isoform 2 are differentially expressed in different tissues. In the kidney, only isoform 1 was expressed, while prostate expressed both isoforms, with levels of isoform 2 being higher. Expression is up-regulated during keratinocyte differentiation. Several epithelial carcinoma cell lines showed lack of expression.

ELF5 Antibody (Center) - Protocols

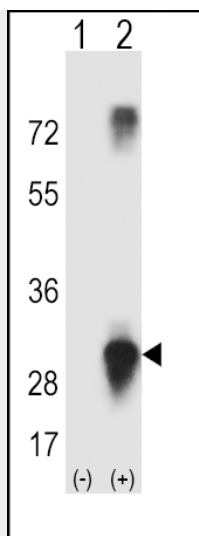
Provided below are standard protocols that you may find useful for product applications.

- [Western Blot](#)
- [Blocking Peptides](#)
- [Dot Blot](#)
- [Immunohistochemistry](#)
- [Immunofluorescence](#)
- [Immunoprecipitation](#)
- [Flow Cytometry](#)
- [Cell Culture](#)

ELF5 Antibody (Center) - Images



Western blot analysis of ELF5 Antibody (Center) (Cat. #AP7394c) in MCF7(lane 1),T47D cell line lysates(lane 2) and mouse lung tissues(lane 3) lysates(35ug/lane). ELF5 (arrow) was detected using the purified Pab.



Western blot analysis of ELF5 (arrow) using rabbit polyclonal ELF5 Antibody (Center) (Cat. #AP7394c). 293 cell lysates (2 ug/lane) either nontransfected (Lane 1) or transiently transfected (Lane 2) with the ELF5 gene.

ELF5 Antibody (Center) - Background

ELF5 is a member of an epithelium-specific subclass of the Ets transcription factor family. In addition to its role in regulating the later stages of terminal differentiation of keratinocytes, it appears to regulate a number of epithelium-specific genes found in tissues containing glandular epithelium such as salivary gland and prostate. It has very low affinity to DNA due to its negative regulatory domain at the amino terminus.

ELF5 Antibody (Center) - References

Choi,Y.S., Biochem. J. 398 (3), 497-507 (2006)
Tummala,R., J. Cell. Biochem. 97 (4), 766-781 (2006)