

Tryptase-3 Polyclonal Antibody
Catalog # AP73959**Specification**

Tryptase-3 Polyclonal Antibody - Product Information

Application	WB
Primary Accession	Q9BZJ3
Reactivity	Human
Host	Rabbit
Clonality	Polyclonal

Tryptase-3 Polyclonal Antibody - Additional Information**Gene ID** 23430**Other Names**

Tryptase delta (EC 3.4.21.59) (Delta-tryptase) (HmMCP-3-like tryptase III) (Mast cell mMCP-7-like) (Tryptase-3)

Dilution

WB~~WB 1:500-2000, ELISA 1:10000-20000

Format

Liquid in PBS containing 50% glycerol, 0.5% BSA and 0.09% (W/V) sodium azide.

Storage Conditions

-20°C

Tryptase-3 Polyclonal Antibody - Protein Information**Name** TPSD1**Function**

Tryptase is the major neutral protease present in mast cells and is secreted upon the coupled activation-degranulation response of this cell type.

Cellular Location

Secreted. Note=Released from the secretory granules upon mast cell activation.

Tissue Location

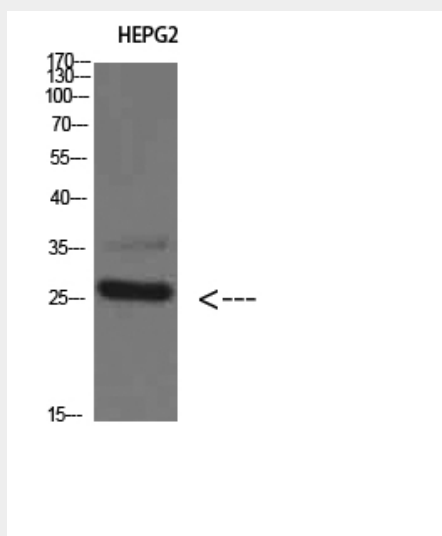
Expressed in colon, lung, heart and synovial tissue. May be specific to mast cells.

Tryptase-3 Polyclonal Antibody - Protocols

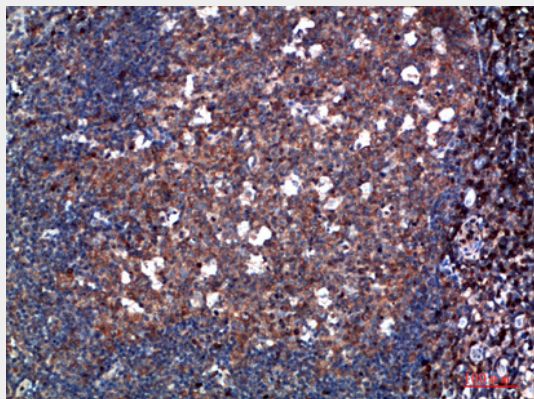
Provided below are standard protocols that you may find useful for product applications.

- [Western Blot](#)
- [Blocking Peptides](#)
- [Dot Blot](#)
- [Immunohistochemistry](#)
- [Immunofluorescence](#)
- [Immunoprecipitation](#)
- [Flow Cytometry](#)
- [Cell Culture](#)

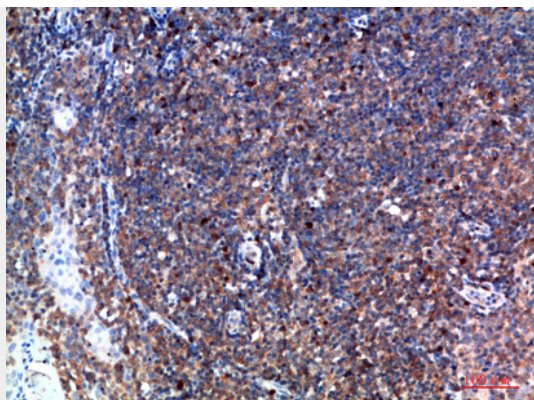
Tryptase-3 Polyclonal Antibody - Images



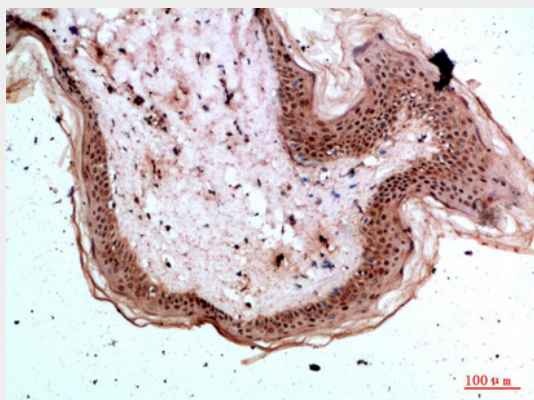
Western Blot analysis of HEPG2 cells using Tryptase-3 Polyclonal Antibody diluted at 1:800. Secondary antibody was diluted at 1:20000



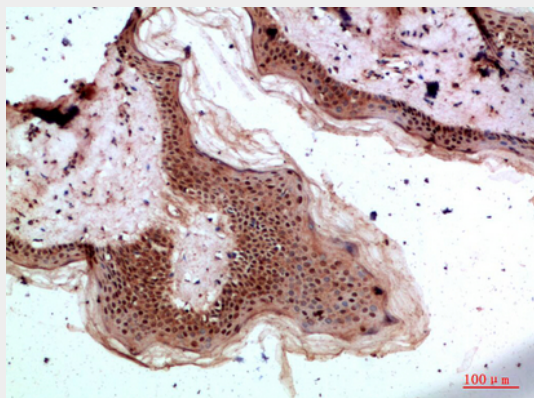
Immunohistochemical analysis of paraffin-embedded human-tonsil, antibody was diluted at 1:200



Immunohistochemical analysis of paraffin-embedded human-tonsil, antibody was diluted at 1:200



Immunohistochemical analysis of paraffin-embedded human-skin, antibody was diluted at 1:200



Immunohistochemical analysis of paraffin-embedded human-skin, antibody was diluted at 1:200

Tryptase-3 Polyclonal Antibody - Background

Tryptase is the major neutral protease present in mast cells and is secreted upon the coupled activation-degranulation response of this cell type.