

MIA2 Polyclonal Antibody
Catalog # AP73962**Specification**

MIA2 Polyclonal Antibody - Product Information

Application	WB
Primary Accession	Q96PC5
Reactivity	Human
Host	Rabbit
Clonality	Polyclonal

MIA2 Polyclonal Antibody - Additional Information**Gene ID** 4253**Other Names**

Melanoma inhibitory activity protein 2

Dilution

WB~~WB 1:500-2000, ELISA 1:10000-20000

Format

Liquid in PBS containing 50% glycerol, 0.5% BSA and 0.09% (W/V) sodium azide.

Storage Conditions

-20°C

MIA2 Polyclonal Antibody - Protein Information**Name** MIA2 ([HGNC:18432](#))**Function**

Plays a role in the transport of cargos that are too large to fit into COPII-coated vesicles and require specific mechanisms to be incorporated into membrane-bound carriers and exported from the endoplasmic reticulum (PubMed: [21525241](http://www.uniprot.org/citations/21525241), PubMed: [25202031](http://www.uniprot.org/citations/25202031), PubMed: [27138255](http://www.uniprot.org/citations/27138255), PubMed: [27170179](http://www.uniprot.org/citations/27170179)). Plays a role in the secretion of lipoproteins, pre-chylomicrons and pre-VLDLs, by participating in their export from the endoplasmic reticulum (PubMed: [27138255](http://www.uniprot.org/citations/27138255)). Thereby, may play a role in cholesterol and triglyceride homeostasis (By similarity). Required for collagen VII (COL7A1) secretion by loading COL7A1 into transport carriers and recruiting PREB/SEC12 at the endoplasmic reticulum exit sites (PubMed: [21525241](http://www.uniprot.org/citations/21525241), PubMed: [25202031](http://www.uniprot.org/citations/25202031), PubMed: [27170179](http://www.uniprot.org/citations/27170179)).

Cellular Location

Endoplasmic reticulum membrane; Single-pass membrane protein. Note=Localizes to endoplasmic reticulum exit sites (ERES), also known as transitional endoplasmic reticulum (tER).

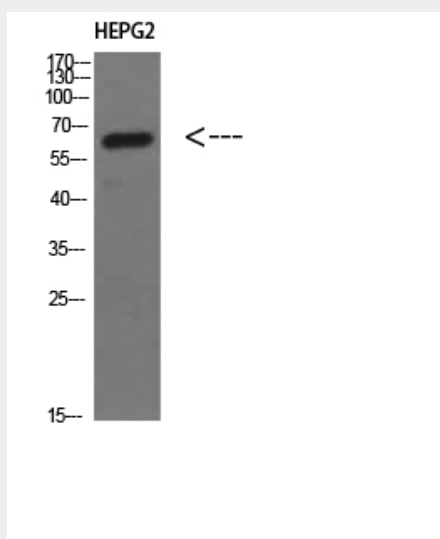
Tissue Location

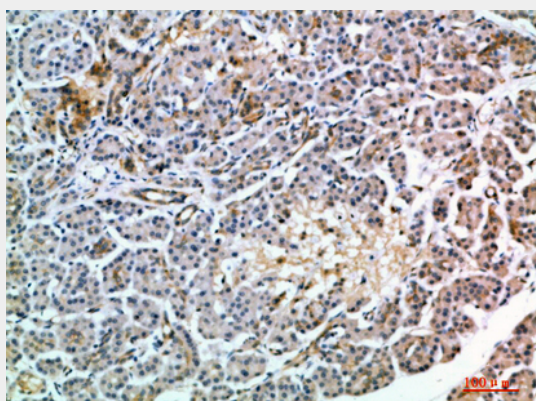
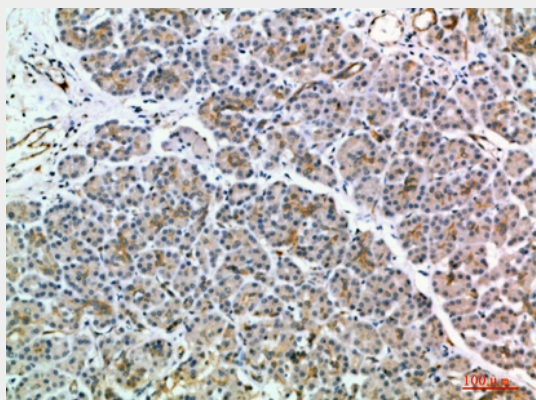
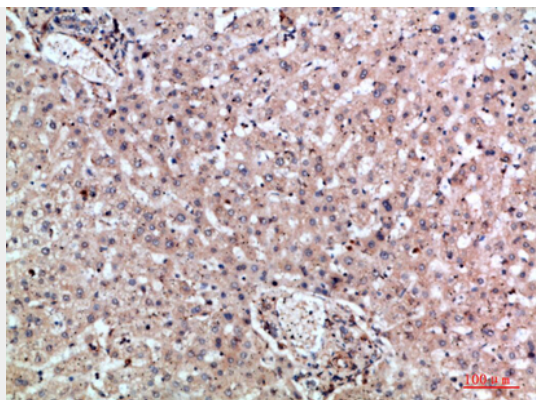
Highly expressed in liver and weakly in testis. Expression was higher in patients with severe fibrosis or inflammation and chronic hepatitis (PubMed:12586826). Isoform 1 is specifically expressed in lung, testis, small intestine, colon, pancreas, kidney, liver and prostate (PubMed:27138255). Isoform 8 is expressed only in testis (at the protein level). Isoform 8 (at protein level) and isoform 9 are expressed in cutaneous T-cell lymphoma (CTCL) cell lines, colorectal carcinomas, breast carcinomas and melanoma. Isoform 9, but not isoform 5A, is expressed in head and neck squamous cell carcinoma (PubMed:12839582).

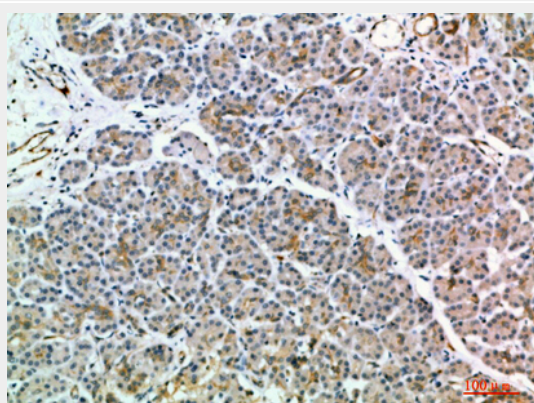
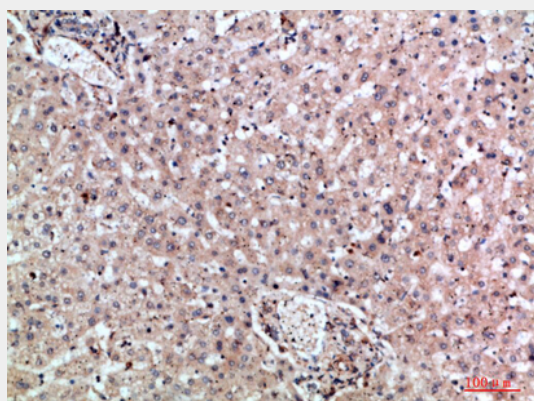
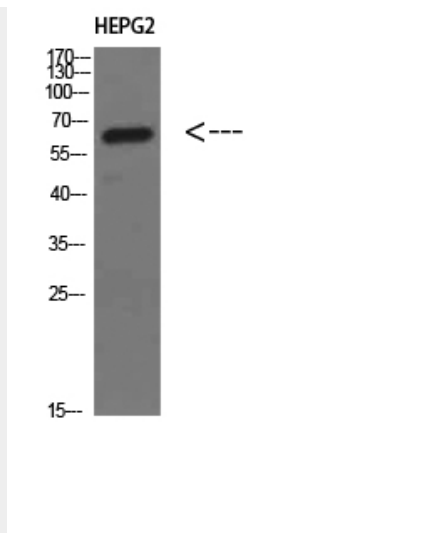
MIA2 Polyclonal Antibody - Protocols

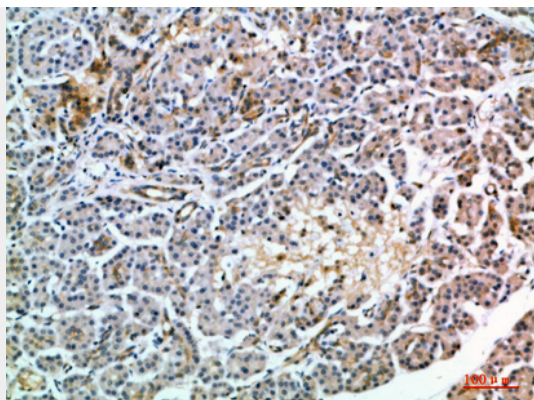
Provided below are standard protocols that you may find useful for product applications.

- [Western Blot](#)
- [Blocking Peptides](#)
- [Dot Blot](#)
- [Immunohistochemistry](#)
- [Immunofluorescence](#)
- [Immunoprecipitation](#)
- [Flow Cytometry](#)
- [Cell Culture](#)

MIA2 Polyclonal Antibody - Images







MIA2 Polyclonal Antibody - Background

Plays a role in the transport of cargos that are too large to fit into COPII-coated vesicles and require specific mechanisms to be incorporated into membrane-bound carriers and exported from the endoplasmic reticulum (PubMed:27138255, PubMed:21525241, PubMed:25202031, PubMed:27170179). Plays a role in the secretion of lipoproteins, pre-chylomicrons and pre-VLDLs, by participating in their export from the endoplasmic reticulum (PubMed:27138255). Thereby, may play a role in cholesterol and triglyceride homeostasis (By similarity). Required for collagen VII (COL7A1) secretion by loading COL7A1 into transport carriers and recruiting PREB/SEC12 at the endoplasmic reticulum exit sites (PubMed:21525241, PubMed:25202031, PubMed:27170179).