

RBM3 Antibody (Center)
Purified Rabbit Polyclonal Antibody (Pab)
Catalog # AP7397C**Specification**

RBM3 Antibody (Center) - Product Information

Application	WB, FC, IHC-P,E
Primary Accession	P98179
Other Accession	O925G0 , O89086
Reactivity	Human
Predicted	Mouse, Rat
Host	Rabbit
Clonality	Polyclonal
Isotype	Rabbit IgG
Calculated MW	17170
Antigen Region	55-84

RBM3 Antibody (Center) - Additional Information**Gene ID** 5935**Other Names**

Putative RNA-binding protein 3, RNA-binding motif protein 3, RNPL, RBM3, RNPL

Target/Specificity

This RBM3 antibody is generated from rabbits immunized with a KLH conjugated synthetic peptide between 55-84 amino acids from the Central region of human RBM3.

Dilution

WB~~1:1000
FC~~1:10~50
IHC-P~~1:50~100
E~~Use at an assay dependent concentration.

Format

Purified polyclonal antibody supplied in PBS with 0.09% (W/V) sodium azide. This antibody is prepared by Saturated Ammonium Sulfate (SAS) precipitation followed by dialysis against PBS.

Storage

Maintain refrigerated at 2-8°C for up to 2 weeks. For long term storage store at -20°C in small aliquots to prevent freeze-thaw cycles.

Precautions

RBM3 Antibody (Center) is for research use only and not for use in diagnostic or therapeutic procedures.

RBM3 Antibody (Center) - Protein Information

Name RBM3

Synonyms RNPL

Function Cold-inducible mRNA binding protein that enhances global protein synthesis at both physiological and mild hypothermic temperatures. Reduces the relative abundance of microRNAs, when overexpressed. Enhances phosphorylation of translation initiation factors and active polysome formation (By similarity).

Cellular Location

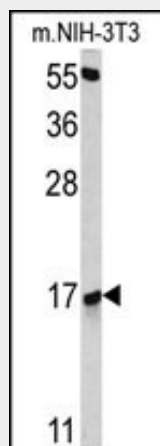
Nucleus. Cytoplasm. Cell projection, dendrite. Note=Localizes in mRNA granules in dendrites.

RBM3 Antibody (Center) - Protocols

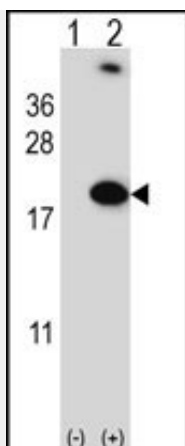
Provided below are standard protocols that you may find useful for product applications.

- [Western Blot](#)
- [Blocking Peptides](#)
- [Dot Blot](#)
- [Immunohistochemistry](#)
- [Immunofluorescence](#)
- [Immunoprecipitation](#)
- [Flow Cytometry](#)
- [Cell Culture](#)

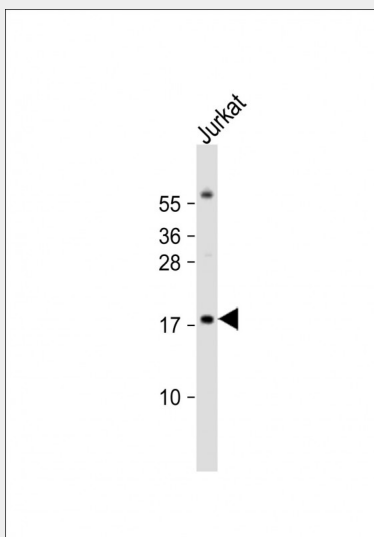
RBM3 Antibody (Center) - Images



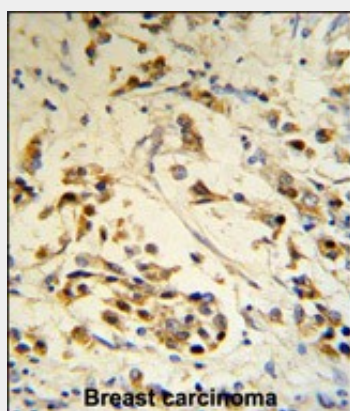
Western blot analysis of RBM3 antibody (Center) (Cat.# AP7397c) in NIH-3T3 cell line lysates (35ug/lane). RBM3 (arrow) was detected using the purified Pab.



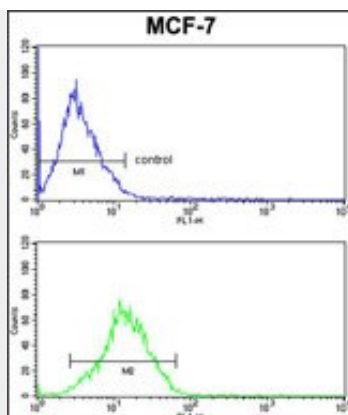
Western blot analysis of RBM3 (arrow) using rabbit polyclonal RBM3 Antibody (Center) (Cat. #AP7397c). 293 cell lysates (2 ug/lane) either nontransfected (Lane 1) or transiently transfected (Lane 2) with the RBM3 gene.



Anti-RBM3 Antibody (Center) at 1:1000 dilution + Jurkat whole cell lysate Lysates/proteins at 20 µg per lane. Secondary Goat Anti-Rabbit IgG, (H+L), Peroxidase conjugated at 1/10000 dilution. Predicted band size : 17 kDa Blocking/Dilution buffer: 5% NFDM/TBST.



RBM3 Antibody (Center) (RB18776) IHC analysis in formalin fixed and paraffin embedded human breast carcinoma followed by peroxidase conjugation of the secondary antibody and DAB staining. This data demonstrates the use of the RBM3 Antibody (Center) for immunohistochemistry. Clinical relevance has not been evaluated.



RBM3 Antibody (Center)(Cat.#AP7397c) FC analysis of MCF-7 cells (bottom histogram) compared to a negative control cell (top histogram). FITC-conjugated goat-anti-rabbit secondary antibodies were used for the analysis.

RBM3 Antibody (Center) - Background

RBM3 is a member of the glycine-rich RNA-binding protein family and a protein with one RNA recognition motif (RRM) domain. Expression of this protein is induced by cold shock and low oxygen tension.

RBM3 Antibody (Center) - References

Zeng,Y., J. Cell. Biochem. 107 (1), 179-188 (2009)
Sureban,S.M., Oncogene 27 (33), 4544-4556 (2008)