

CHID1 Polyclonal Antibody
Catalog # AP74014**Specification**

CHID1 Polyclonal Antibody - Product Information

Application	WB
Primary Accession	Q9BWS9
Reactivity	Human, Mouse, Rat
Host	Rabbit
Clonality	Polyclonal

CHID1 Polyclonal Antibody - Additional Information**Gene ID** 66005**Other Names**

CHID1 GL008 PSEC0104 SB139

Dilution

WB~~WB 1:500-2000, ELISA 1:10000-20000

Format

Liquid in PBS containing 50% glycerol, 0.5% BSA and 0.09% (W/V) sodium azide.

Storage Conditions

-20°C

CHID1 Polyclonal Antibody - Protein Information**Name** CHID1**Function**

Saccharide- and LPS-binding protein with possible roles in pathogen sensing and endotoxin neutralization. Ligand-binding specificity relates to the length of the oligosaccharides, with preference for chitotetraose (in vitro).

Cellular Location

Secreted. Lysosome

Tissue Location

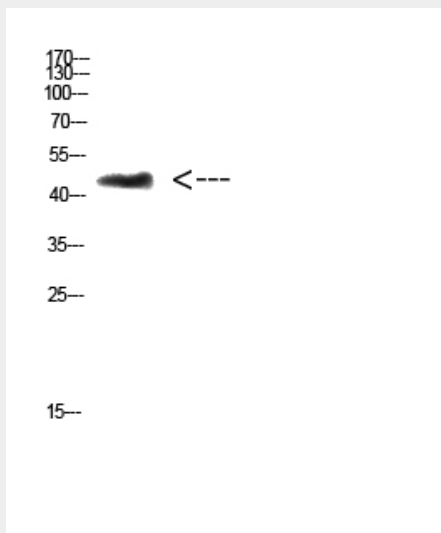
Expressed in cells of monocytic, T, B and epithelial origin.

CHID1 Polyclonal Antibody - Protocols

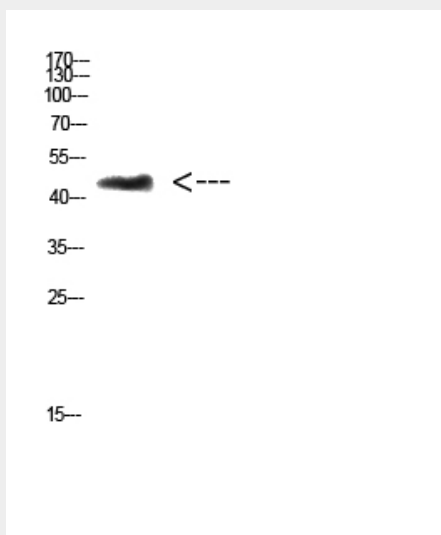
Provided below are standard protocols that you may find useful for product applications.

- [Western Blot](#)
- [Blocking Peptides](#)
- [Dot Blot](#)
- [Immunohistochemistry](#)
- [Immunofluorescence](#)
- [Immunoprecipitation](#)
- [Flow Cytometry](#)
- [Cell Culture](#)

CHID1 Polyclonal Antibody - Images



Western Blot analysis of 3T3 cells using Antibody diluted at 500. Secondary antibody was diluted at 1:20000



Western Blot analysis of 3T3 cells using Antibody diluted at 500. Secondary antibody was diluted at 1:20000

CHID1 Polyclonal Antibody - Background

Saccharide- and LPS-binding protein with possible roles in pathogen sensing and endotoxin neutralization. Ligand-binding specificity relates to the length of the oligosaccharides, with preference for chitotetraose (in vitro).