

COL17A1 Polyclonal Antibody
Catalog # AP74015**Specification**

COL17A1 Polyclonal Antibody - Product Information

Application	WB
Primary Accession	Q9UMD9
Reactivity	Human
Host	Rabbit
Clonality	Polyclonal

COL17A1 Polyclonal Antibody - Additional Information**Gene ID** 1308**Other Names**

COL17A1 BP180 BPAG2

Dilution

WB~~WB 1:500-2000, ELISA 1:10000-20000

Format

Liquid in PBS containing 50% glycerol, 0.5% BSA and 0.09% (W/V) sodium azide.

Storage Conditions

-20°C

COL17A1 Polyclonal Antibody - Protein Information**Name** COL17A1**Synonyms** BP180, BPAG2**Function**

May play a role in the integrity of hemidesmosome and the attachment of basal keratinocytes to the underlying basement membrane.

Cellular Location

Cell junction, hemidesmosome. Membrane; Single- pass type II membrane protein. Note=Localized along the plasma membrane of the hemidesmosome [97 kDa linear IgA disease antigen]: Secreted, extracellular space, extracellular matrix, basement membrane Note=Localized in the lamina lucida beneath the hemidesmosomes

Tissue Location

Detected in skin (PubMed:8618013). In the cornea, it is detected in the epithelial basement membrane, the epithelial cells, and at a lower level in stromal cells (at protein level) (PubMed:25676728). Stratified squamous epithelia. Found in hemidesmosomes. Expressed in cornea, oral mucosa, esophagus, intestine, kidney collecting ducts, ureter, bladder, urethra and

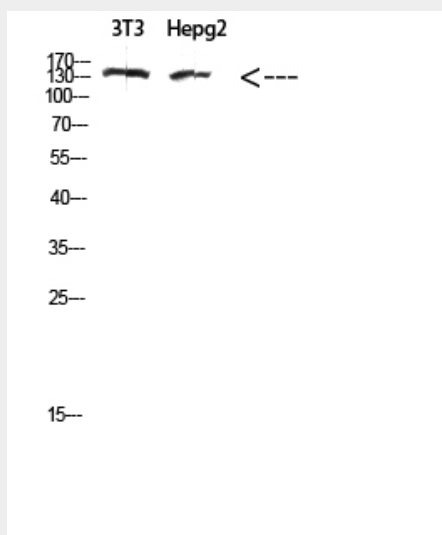
thymus but is absent in lung, blood vessels, skeletal muscle and nerves

COL17A1 Polyclonal Antibody - Protocols

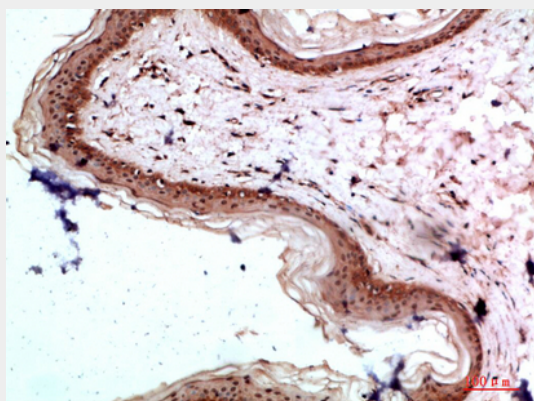
Provided below are standard protocols that you may find useful for product applications.

- [Western Blot](#)
- [Blocking Peptides](#)
- [Dot Blot](#)
- [Immunohistochemistry](#)
- [Immunofluorescence](#)
- [Immunoprecipitation](#)
- [Flow Cytometry](#)
- [Cell Culture](#)

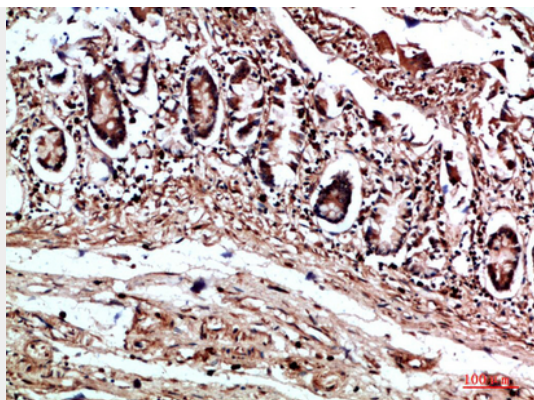
COL17A1 Polyclonal Antibody - Images



Western Blot analysis of 3T3, hepg2 cells using Antibody diluted at 500. Secondary antibody was diluted at 1:20000



Immunohistochemical analysis of paraffin-embedded human-skin, antibody was diluted at 1:200



Immunohistochemical analysis of paraffin-embedded human-colon, antibody was diluted at 1:200

COL17A1 Polyclonal Antibody - Background

May play a role in the integrity of hemidesmosome and the attachment of basal keratinocytes to the underlying basement membrane.