

WISP-3 Polyclonal Antibody
Catalog # AP74023**Specification**

WISP-3 Polyclonal Antibody - Product Information

Application	WB
Primary Accession	O95389
Reactivity	Human
Host	Rabbit
Clonality	Polyclonal

WISP-3 Polyclonal Antibody - Additional Information**Gene ID** 8838**Other Names**

WNT1-inducible-signaling pathway protein 3 (WISP-3) (CCN family member 6)

Dilution

WB~~WB 1:500-2000, ELISA 1:10000-20000

Format

Liquid in PBS containing 50% glycerol, 0.5% BSA and 0.09% (W/V) sodium azide.

Storage Conditions

-20°C

WISP-3 Polyclonal Antibody - Protein Information**Name** CCN6 ([HGNC:12771](#))**Function**

Plays a role in mitochondrial electron transport and mitochondrial respiration (PubMed:27252383). Through its regulation of the mitochondrial function may play a role in normal postnatal skeletal growth and cartilage homeostasis (PubMed:10471507, PubMed:27252383).

Cellular Location

Secreted. Mitochondrion. Note=Associated with membranes.

Tissue Location

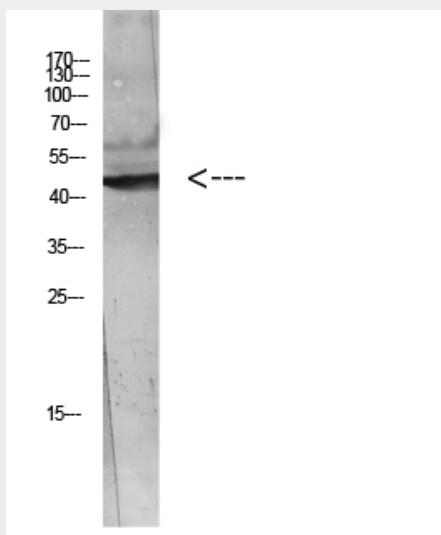
Predominant expression in adult kidney and testis and fetal kidney. Weaker expression found in placenta, ovary, prostate and small intestine (PubMed:10471507, PubMed:9843955). Also expressed in skeletally-derived cells such as synoviocytes and articular cartilage chondrocytes (PubMed:10471507).

WISP-3 Polyclonal Antibody - Protocols

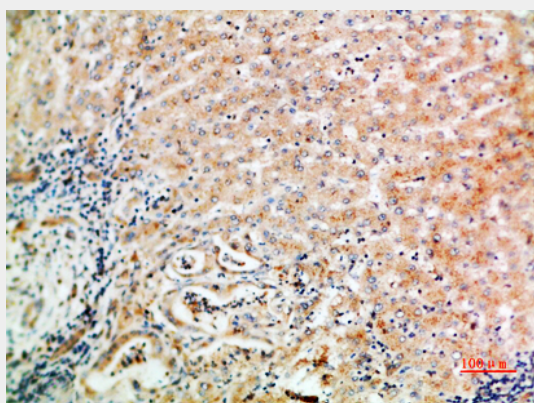
Provided below are standard protocols that you may find useful for product applications.

- [Western Blot](#)
- [Blocking Peptides](#)
- [Dot Blot](#)
- [Immunohistochemistry](#)
- [Immunofluorescence](#)
- [Immunoprecipitation](#)
- [Flow Cytometry](#)
- [Cell Culture](#)

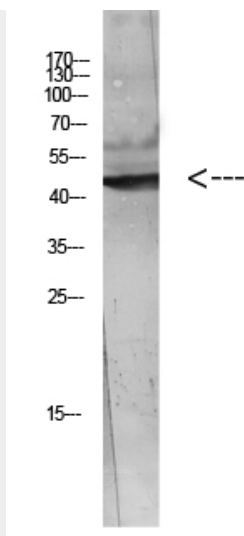
WISP-3 Polyclonal Antibody - Images



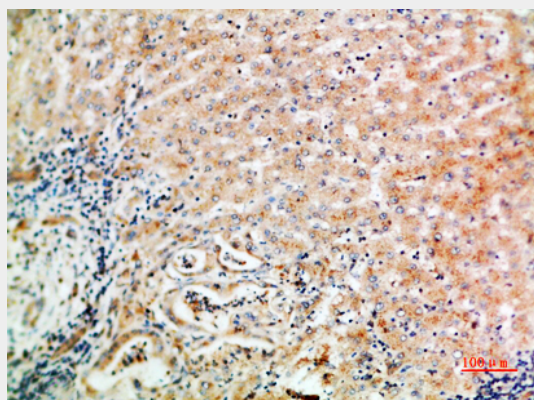
Western blot analysis of Hela Cell Lysate using antibody. Secondary antibody was diluted at 1:20000



Immunohistochemical analysis of paraffin-embedded human-liver-cancer, antibody was diluted at 1:200



Western blot analysis of Hela Cell Lysate using antibody. Secondary antibody was diluted at 1:20000



Immunohistochemical analysis of paraffin-embedded human-liver-cancer, antibody was diluted at 1:200

WISP-3 Polyclonal Antibody - Background

Appears to be required for normal postnatal skeletal growth and cartilage homeostasis.