

GABA T-1 Polyclonal Antibody
Catalog # AP74027**Specification**

GABA T-1 Polyclonal Antibody - Product Information

Application	WB
Primary Accession	P30531
Reactivity	Human, Mouse, Rat
Host	Rabbit
Clonality	Polyclonal

GABA T-1 Polyclonal Antibody - Additional Information**Gene ID** 6529**Other Names**

Sodium- and chloride-dependent GABA transporter 1 (GAT-1) (Solute carrier family 6 member 1)

Dilution

WB~~WB 1:500-2000, ELISA 1:10000-20000

Format

Liquid in PBS containing 50% glycerol, 0.5% BSA and 0.09% (W/V) sodium azide.

Storage Conditions

-20°C

GABA T-1 Polyclonal Antibody - Protein Information**Name** SLC6A1**Synonyms** GABATR, GABT1, GAT1**Function**

Mediates transport of gamma-aminobutyric acid (GABA) together with sodium and chloride and is responsible for the reuptake of GABA from the synapse (PubMed:30132828). The translocation of GABA, however, may also occur in the reverse direction leading to the release of GABA (By similarity). The direction and magnitude of GABA transport is a consequence of the prevailing thermodynamic conditions, determined by membrane potential and the intracellular and extracellular concentrations of Na(+), Cl(-) and GABA (By similarity). Can also mediate sodium- and chloride-dependent transport of hypotaurine but to a much lower extent as compared to GABA (By similarity).

Cellular Location

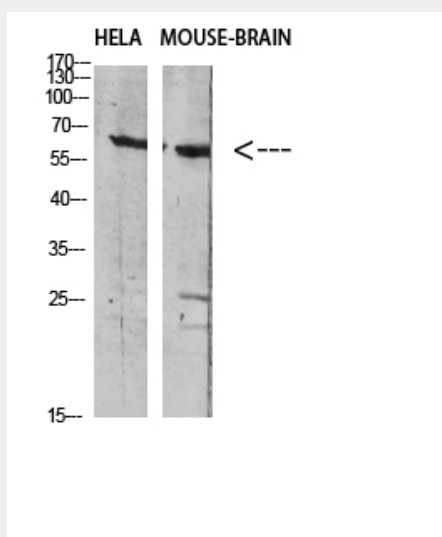
Cell membrane {ECO:0000250|UniProtKB:P23978}; Multi-pass membrane protein. Presynapse {ECO:0000250|UniProtKB:P31648}. Note=Localized at the presynaptic terminals of interneurons. {ECO:0000250|UniProtKB:P31648}

GABA T-1 Polyclonal Antibody - Protocols

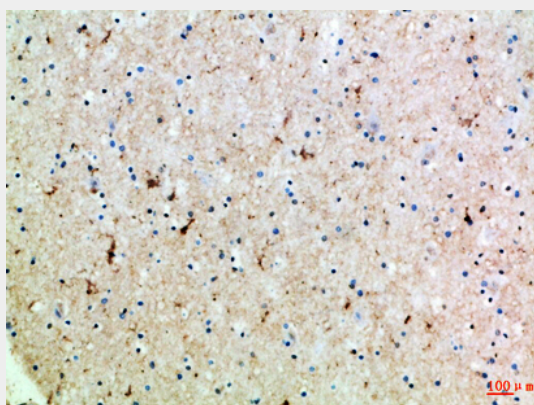
Provided below are standard protocols that you may find useful for product applications.

- [Western Blot](#)
- [Blocking Peptides](#)
- [Dot Blot](#)
- [Immunohistochemistry](#)
- [Immunofluorescence](#)
- [Immunoprecipitation](#)
- [Flow Cytometry](#)
- [Cell Culture](#)

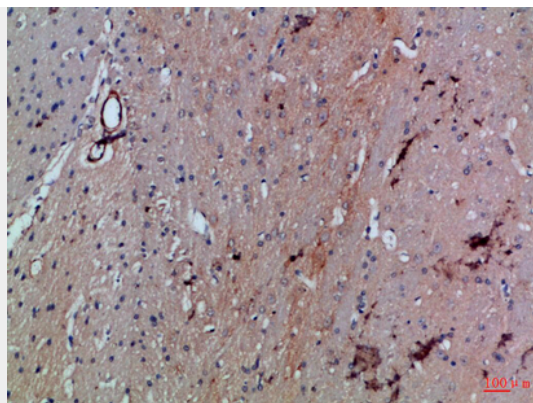
GABA T-1 Polyclonal Antibody - Images



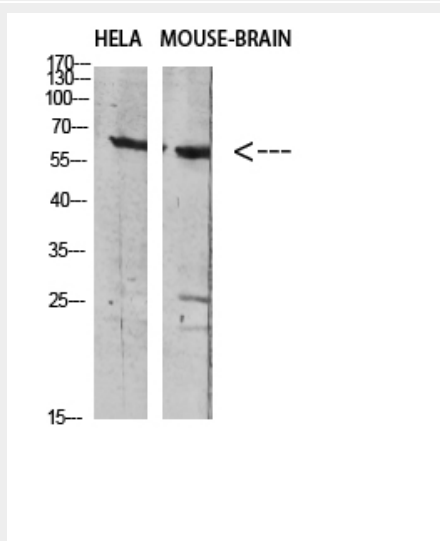
Western blot analysis of HELA MOUSE-BRAIN Cell Lysate using antibody. Secondary antibody was diluted at 1:20000



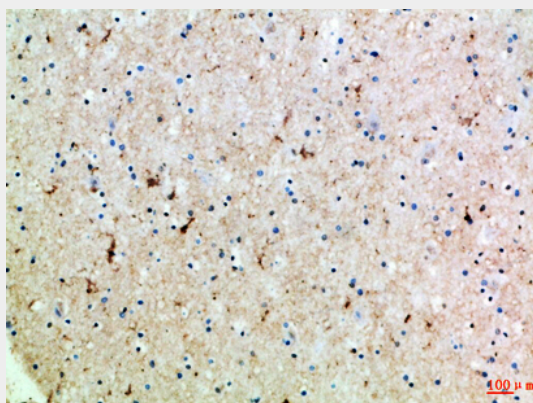
Immunohistochemical analysis of paraffin-embedded Human-brain, antibody was diluted at 1:100



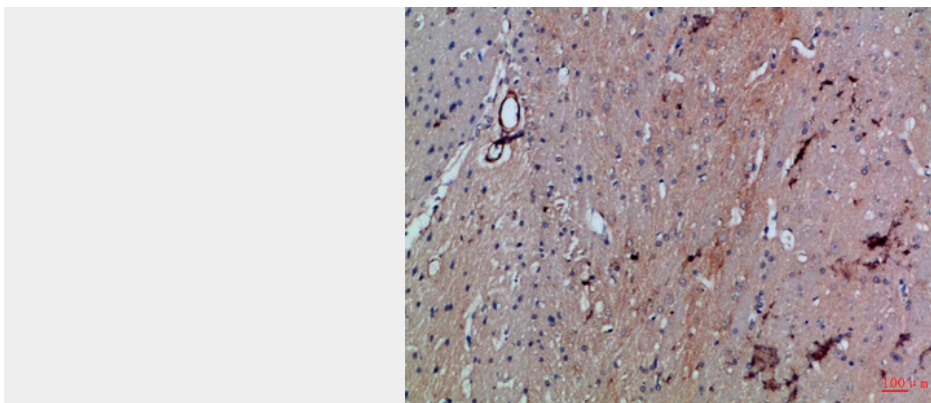
Immunohistochemical analysis of paraffin-embedded Rat-brain, antibody was diluted at 1:100



Western blot analysis of HELA MOUSE-BRAIN Cell Lysate using antibody. Secondary antibody was diluted at 1:20000



Immunohistochemical analysis of paraffin-embedded Human-brain, antibody was diluted at 1:100



Immunohistochemical analysis of paraffin-embedded Rat-brain, antibody was diluted at 1:100

GABA T-1 Polyclonal Antibody - Background

Terminates the action of GABA by its high affinity sodium-dependent reuptake into presynaptic terminals.