

TIM-1 Polyclonal Antibody
Catalog # AP74071**Specification**

TIM-1 Polyclonal Antibody - Product Information

Application	WB
Primary Accession	Q96D42
Reactivity	Human
Host	Rabbit
Clonality	Polyclonal

TIM-1 Polyclonal Antibody - Additional Information**Gene ID** 26762**Other Names**

Hepatitis A virus cellular receptor 1 (HAVcr-1) (Kidney injury molecule 1) (KIM-1) (T-cell immunoglobulin and mucin domain-containing protein 1) (TIMD-1) (T-cell membrane protein 1) (TIM-1) (TIM)

Dilution

WB~~WB 1:500-2000, ELISA 1:10000-20000

Format

Liquid in PBS containing 50% glycerol, 0.5% BSA and 0.09% (W/V) sodium azide.

Storage Conditions

-20°C

TIM-1 Polyclonal Antibody - Protein Information**Name** HAVCR1**Synonyms** KIM1, TIM1, TIMD1**Function**

Phosphatidylserine receptor that plays an important functional role in regulatory B-cells homeostasis including generation, expansion and suppressor functions (By similarity). As P-selectin/SELPLG ligand, plays a specialized role in activated but not naive T-cell trafficking during inflammatory responses (PubMed: [24703780](http://www.uniprot.org/citations/24703780)). Controls thereby T-cell accumulation in the inflamed central nervous system (CNS) and the induction of autoimmune disease (PubMed: [24703780](http://www.uniprot.org/citations/24703780)). Also regulates expression of various anti-inflammatory cytokines and co-inhibitory ligands including IL10 (By similarity). Acts as a regulator of T-cell proliferation (By similarity). May play a role in kidney injury and repair (PubMed: [17471468](http://www.uniprot.org/citations/17471468)).

Cellular Location

Cell membrane; Single-pass type I membrane protein

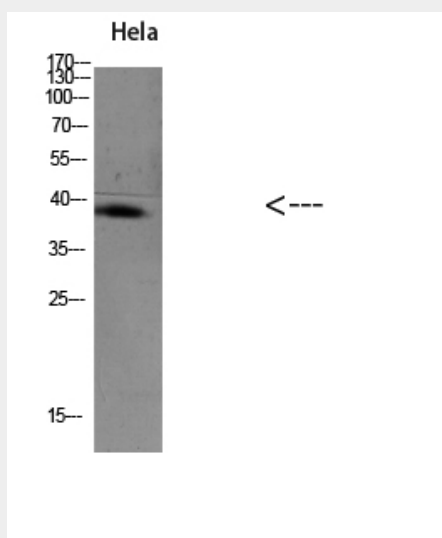
Tissue Location

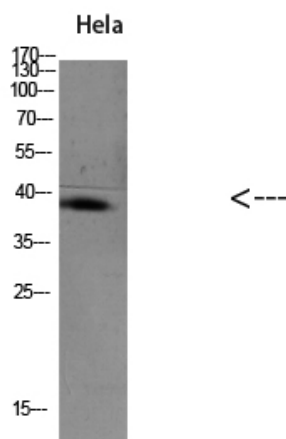
Widely expressed, with highest levels in kidney and testis. Expressed by activated CD4+ T-cells during the development of helper T-cells responses.

TIM-1 Polyclonal Antibody - Protocols

Provided below are standard protocols that you may find useful for product applications.

- [Western Blot](#)
- [Blocking Peptides](#)
- [Dot Blot](#)
- [Immunohistochemistry](#)
- [Immunofluorescence](#)
- [Immunoprecipitation](#)
- [Flow Cytometry](#)
- [Cell Culture](#)

TIM-1 Polyclonal Antibody - Images



TIM-1 Polyclonal Antibody - Background

May play a role in T-helper cell development and the regulation of asthma and allergic diseases. Receptor for TIMD4 (By similarity). May play a role in kidney injury and repair.