

DC-LAMP Polyclonal Antibody
Catalog # AP74074**Specification**

DC-LAMP Polyclonal Antibody - Product Information

Application	WB, IHC-P
Primary Accession	Q9UQV4
Reactivity	Human
Host	Rabbit
Clonality	Polyclonal

DC-LAMP Polyclonal Antibody - Additional Information**Gene ID** 27074**Other Names**

Lysosome-associated membrane glycoprotein 3 (LAMP-3) (Lysosomal-associated membrane protein 3) (DC-lysosome-associated membrane glycoprotein) (DC LAMP) (Protein TSC403) (CD antigen CD208)

Dilution

WB~~WB 1:500-2000,IHC-p 1:500-200, ELISA 1:10000-20000
IHC-P~~N/A

Format

Liquid in PBS containing 50% glycerol, 0.5% BSA and 0.09% (W/V) sodium azide.

Storage Conditions

-20°C

DC-LAMP Polyclonal Antibody - Protein Information**Name** LAMP3**Synonyms** DCLAMP, TSC403**Function**

Lysosomal membrane glycoprotein which plays a role in the unfolded protein response (UPR) that contributes to protein degradation and cell survival during proteasomal dysfunction (PubMed:25681212). Plays a role in the process of fusion of the lysosome with the autophagosome, thereby modulating the autophagic process (PubMed:24434718). Promotes hepatocellular lipogenesis through activation of the PI3K/Akt pathway (PubMed:29056532). May also play a role in dendritic cell function and in adaptive immunity (PubMed:9768752).

Cellular Location

Cell surface. Lysosome membrane; Single-pass type I membrane protein. Cytoplasmic vesicle membrane; Single-pass type I membrane protein. Early endosome membrane; Single-pass type I membrane protein. Note=During dendritic cell maturation, detected on cytoplasmic vesicles (the MHC II compartment) that contain MHC II proteins, LAMP1, LAMP2 and LAMP3 (PubMed:9768752). Detected on lysosomes in mature dendritic cells (PubMed:9768752).

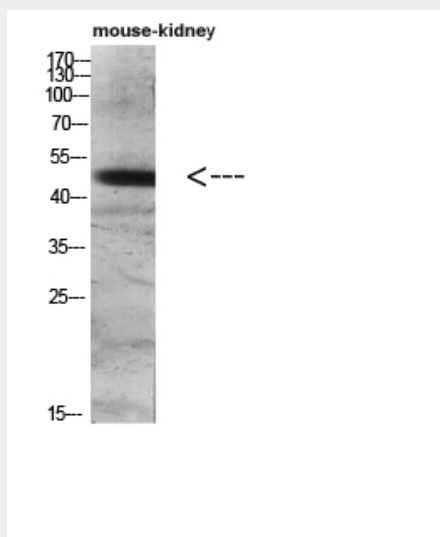
Tissue Location

Detected in tonsil interdigitating dendritic cells, in spleen, lymph node, Peyer's patches in the small intestine, in thymus medulla and in B-cells (at protein level). Expressed in lymphoid organs and dendritic cells. Expressed in lung. Up-regulated in carcinomas of the esophagus, colon, rectum, ureter, stomach, breast, fallopian tube, thyroid and parotid tissues

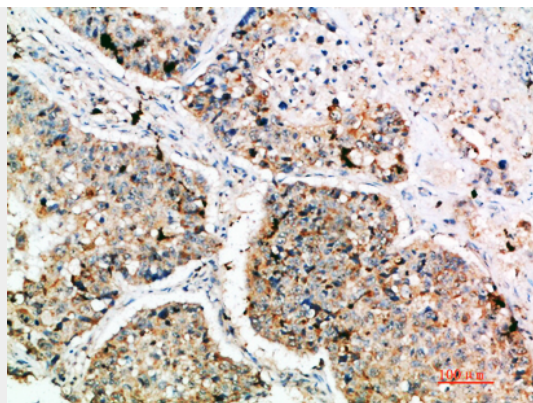
DC-LAMP Polyclonal Antibody - Protocols

Provided below are standard protocols that you may find useful for product applications.

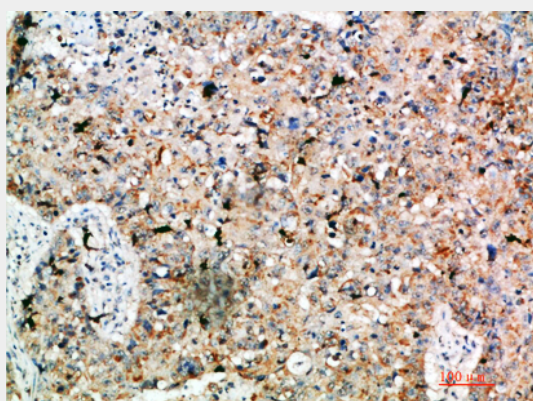
- [Western Blot](#)
- [Blocking Peptides](#)
- [Dot Blot](#)
- [Immunohistochemistry](#)
- [Immunofluorescence](#)
- [Immunoprecipitation](#)
- [Flow Cytometry](#)
- [Cell Culture](#)

DC-LAMP Polyclonal Antibody - Images

Western blot analysis of mouse-lung mouse-heart 293T Hela 3T3 lysate, antibody was diluted at 500. Secondary antibody was diluted at 1:20000



Immunohistochemical analysis of paraffin-embedded human-lung-cancer, antibody was diluted at 1:200



Immunohistochemical analysis of paraffin-embedded human-lung-cancer, antibody was diluted at 1:200

DC-LAMP Polyclonal Antibody - Background

May play a role in dendritic cell function and in adaptive immunity.