

CD299 Polyclonal Antibody
Catalog # AP74075**Specification**

CD299 Polyclonal Antibody - Product Information

Application	WB, IHC-P
Primary Accession	Q9H2X3
Reactivity	Human, Mouse, Rat
Host	Rabbit
Clonality	Polyclonal

CD299 Polyclonal Antibody - Additional Information**Gene ID** 10332**Other Names**

C-type lectin domain family 4 member M (CD209 antigen-like protein 1) (DC-SIGN-related protein) (DC-SIGNR) (Dendritic cell-specific ICAM-3-grabbing non-integrin 2) (DC-SIGN2) (Liver/lymph node-specific ICAM-3-grabbing non-integrin) (L-SIGN) (CD antigen CD299)

Dilution

WB~~WB 1:500-2000,IHC-p 1:500-200, ELISA 1:10000-20000
IHC-P~~N/A

Format

Liquid in PBS containing 50% glycerol, 0.5% BSA and 0.09% (W/V) sodium azide.

Storage Conditions

-20°C

CD299 Polyclonal Antibody - Protein Information**Name** CLEC4M**Synonyms** CD209L, CD209L1, CD299**Function**

Probable pathogen-recognition receptor involved in peripheral immune surveillance in liver. May mediate the endocytosis of pathogens which are subsequently degraded in lysosomal compartments. Is a receptor for ICAM3, probably by binding to mannose-like carbohydrates.

Cellular Location

[Isoform 1]: Cell membrane; Single- pass type II membrane protein [Isoform 3]: Cell membrane; Single- pass type II membrane protein [Isoform 6]: Secreted. [Isoform 10]: Secreted.

Tissue Location

Predominantly highly expressed in liver sinusoidal endothelial cells and in lymph node. Found in placental endothelium but not in macrophages. Expressed in type II alveolar cells and lung

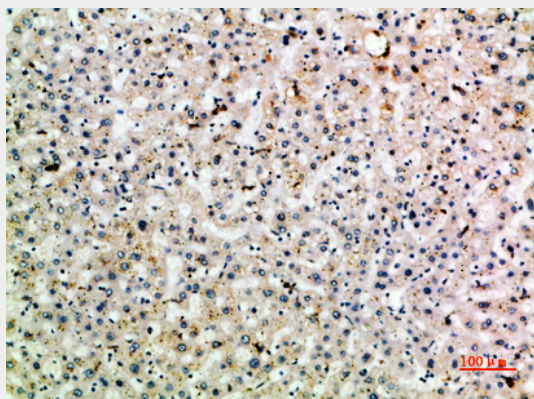
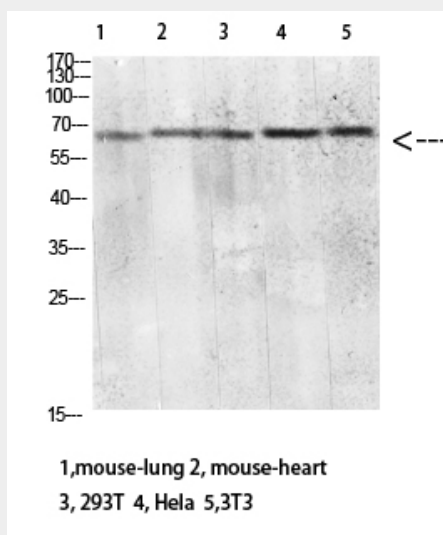
endothelial cells.

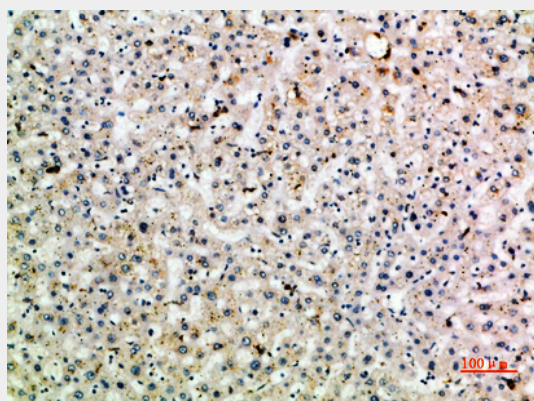
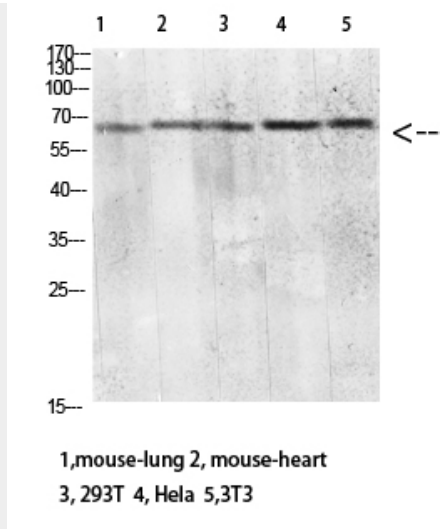
CD299 Polyclonal Antibody - Protocols

Provided below are standard protocols that you may find useful for product applications.

- [Western Blot](#)
- [Blocking Peptides](#)
- [Dot Blot](#)
- [Immunohistochemistry](#)
- [Immunofluorescence](#)
- [Immunoprecipitation](#)
- [Flow Cytometry](#)
- [Cell Culture](#)

CD299 Polyclonal Antibody - Images





CD299 Polyclonal Antibody - Background

Probable pathogen-recognition receptor involved in peripheral immune surveillance in liver. May mediate the endocytosis of pathogens which are subsequently degraded in lysosomal compartments. Is a receptor for ICAM3, probably by binding to mannose-like carbohydrates.