

**Gremlin-2 Polyclonal Antibody**  
**Catalog # AP74077****Specification**

---

**Gremlin-2 Polyclonal Antibody - Product Information**

Application	WB, IHC-P
Primary Accession	<a href="#">Q9H772</a>
Reactivity	Human, Mouse
Host	Rabbit
Clonality	Polyclonal

**Gremlin-2 Polyclonal Antibody - Additional Information****Gene ID** 64388**Other Names**

Gremlin-2 (Cysteine knot superfamily 1, BMP antagonist 2) (DAN domain family member 3)  
(Protein related to DAN and cerberus)

**Dilution**

WB~~WB 1:500-2000,IHC-p 1:500-200, ELISA 1:10000-20000  
IHC-P~~N/A

**Format**

Liquid in PBS containing 50% glycerol, 0.5% BSA and 0.09% (W/V) sodium azide.

**Storage Conditions**

-20°C

**Gremlin-2 Polyclonal Antibody - Protein Information****Name** GREM2**Synonyms** CKTSF1B2, DAND3, PRDC**Function**

Cytokine that inhibits the activity of BMP2 and BMP4 in a dose-dependent manner, and thereby modulates signaling by BMP family members. Contributes to the regulation of embryonic morphogenesis via BMP family members. Antagonizes BMP4-induced suppression of progesterone production in granulosa cells.

**Cellular Location**

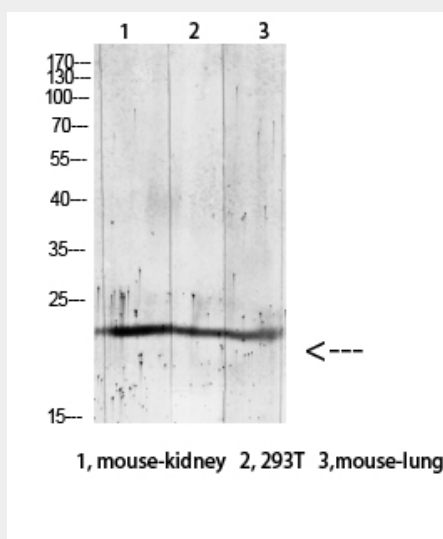
Secreted.

**Gremlin-2 Polyclonal Antibody - Protocols**

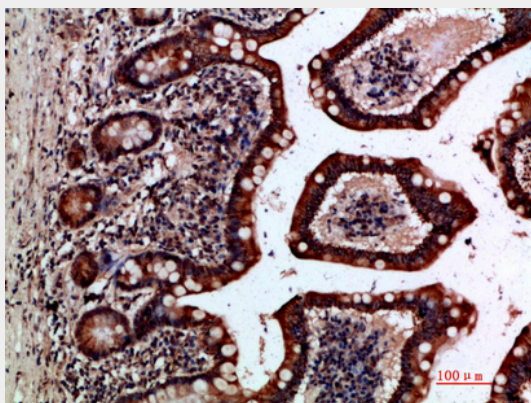
Provided below are standard protocols that you may find useful for product applications.

- [Western Blot](#)
- [Blocking Peptides](#)
- [Dot Blot](#)
- [Immunohistochemistry](#)
- [Immunofluorescence](#)
- [Immunoprecipitation](#)
- [Flow Cytometry](#)
- [Cell Culture](#)

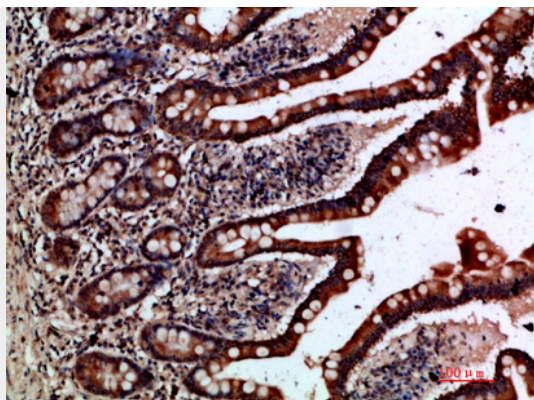
#### Gremlin-2 Polyclonal Antibody - Images



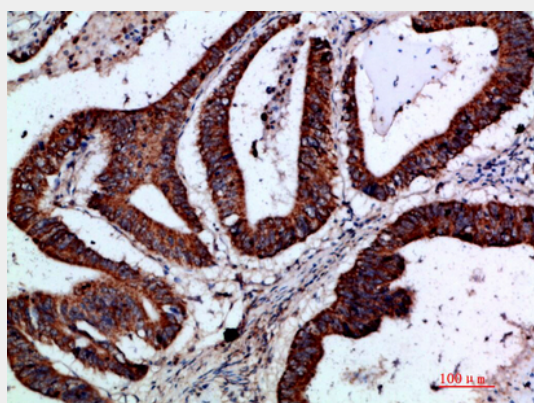
Western blot analysis of RAT-brain lysate, antibody was diluted at 1000. Secondary antibody was diluted at 1:20000



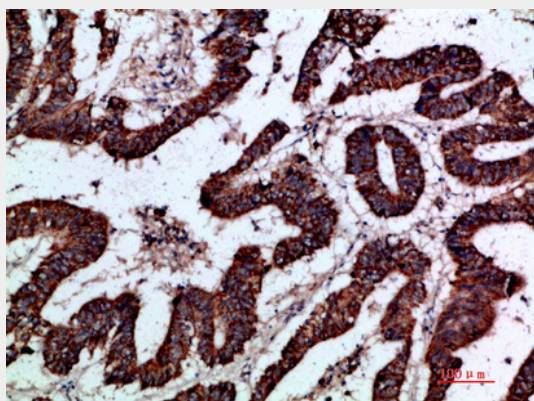
Immunohistochemical analysis of paraffin-embedded human-small-intestine, antibody was diluted at 1:200



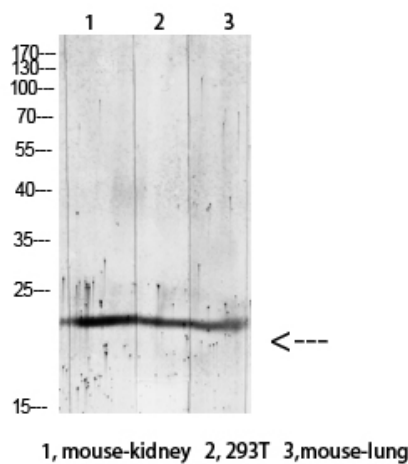
Immunohistochemical analysis of paraffin-embedded human-small-intestine, antibody was diluted at 1:200



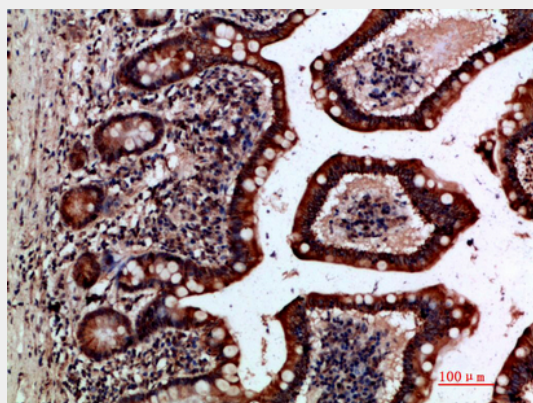
Immunohistochemical analysis of paraffin-embedded human-colon-cancer, antibody was diluted at 1:200



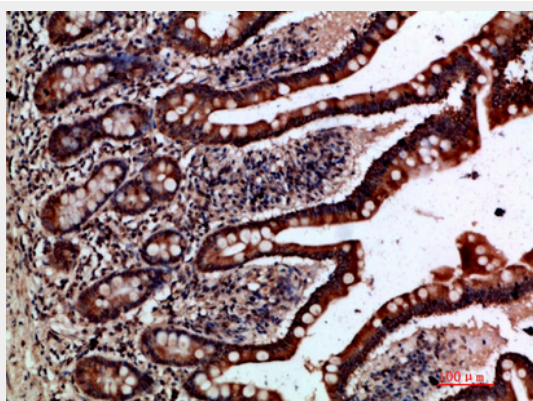
Immunohistochemical analysis of paraffin-embedded human-colon-cancer, antibody was diluted at 1:200



Western blot analysis of RAT-brain lysate, antibody was diluted at 1000. Secondary antibody was diluted at 1:20000

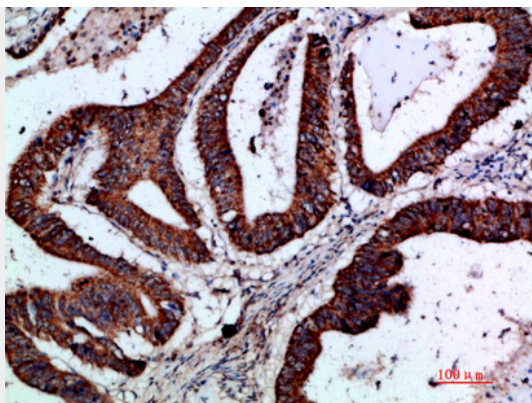


Immunohistochemical analysis of paraffin-embedded human-small-intestine, antibody was diluted at 1:200

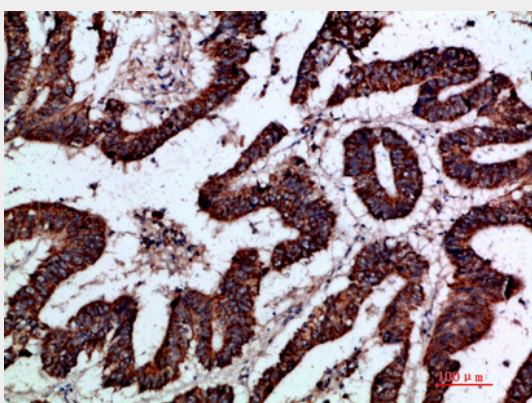


Immunohistochemical analysis of paraffin-embedded human-small-intestine, antibody was diluted at 1:200





Immunohistochemical analysis of paraffin-embedded human-colon-cancer, antibody was diluted at 1:200



Immunohistochemical analysis of paraffin-embedded human-colon-cancer, antibody was diluted at 1:200

#### **Gremlin-2 Polyclonal Antibody - Background**

Cytokine that inhibits the activity of BMP2 and BMP4 in a dose-dependent manner, and thereby modulates signaling by BMP family members. Contributes to the regulation of embryonic morphogenesis via BMP family members. Antagonizes BMP4-induced suppression of progesterone production in granulosa cells.