

**IL-12B p40 Polyclonal Antibody**  
**Catalog # AP74079****Specification**

---

**IL-12B p40 Polyclonal Antibody - Product Information**

Application	<b>WB, IHC-P</b>
Primary Accession	<a href="#">P29460</a>
Reactivity	<b>Human</b>
Host	<b>Rabbit</b>
Clonality	<b>Polyclonal</b>

**IL-12B p40 Polyclonal Antibody - Additional Information****Gene ID** 3593**Other Names**

Interleukin-12 subunit beta (IL-12B) (Cytotoxic lymphocyte maturation factor 40 kDa subunit) (CLMF p40) (IL-12 subunit p40) (NK cell stimulatory factor chain 2) (NKSF2)

**Dilution**WB~~WB 1:500-2000,IHC-p 1:500-200, ELISA 1:10000-20000  
IHC-P~~N/A**Format**

Liquid in PBS containing 50% glycerol, 0.5% BSA and 0.09% (W/V) sodium azide.

**Storage Conditions**

-20°C

**IL-12B p40 Polyclonal Antibody - Protein Information****Name** IL12B**Synonyms** NKSF2**Function**

Cytokine that can act as a growth factor for activated T and NK cells, enhance the lytic activity of NK/lymphokine-activated killer cells, and stimulate the production of IFN-gamma by resting PBMC.

**Cellular Location**

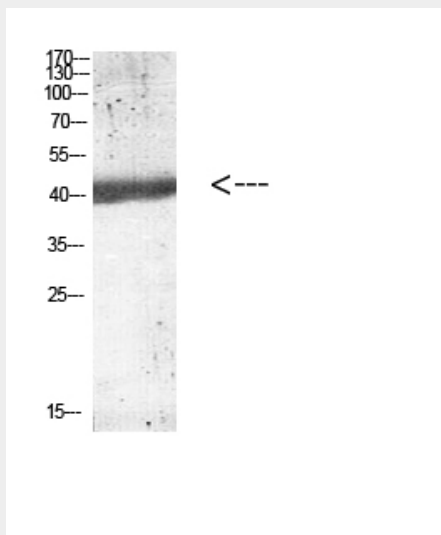
Secreted.

**IL-12B p40 Polyclonal Antibody - Protocols**

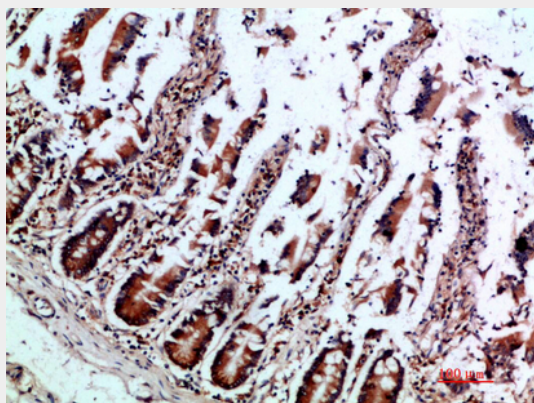
Provided below are standard protocols that you may find useful for product applications.

- [Western Blot](#)
- [Blocking Peptides](#)
- [Dot Blot](#)
- [Immunohistochemistry](#)
- [Immunofluorescence](#)
- [Immunoprecipitation](#)
- [Flow Cytometry](#)
- [Cell Culture](#)

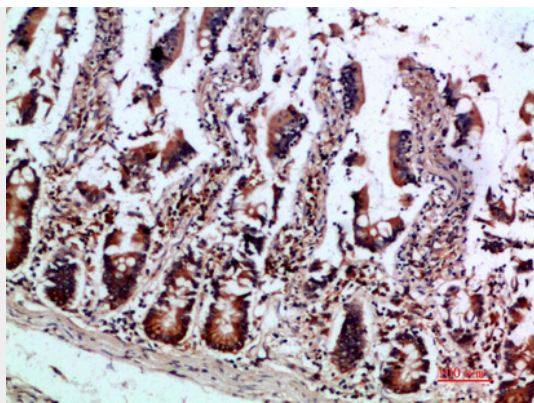
#### IL-12B p40 Polyclonal Antibody - Images



Western blot analysis of mouse-kidney lysate, antibody was diluted at 1000. Secondary antibody was diluted at 1:20000



Immunohistochemical analysis of paraffin-embedded human-colon, antibody was diluted at 1:200



Immunohistochemical analysis of paraffin-embedded human-colon, antibody was diluted at 1:200

#### **IL-12B p40 Polyclonal Antibody - Background**

Cytokine that can act as a growth factor for activated T and NK cells, enhance the lytic activity of NK/lymphokine- activated killer cells, and stimulate the production of IFN-gamma by resting PBMC.