

Integrin α 1 Polyclonal Antibody
Catalog # AP74091**Specification**

Integrin α 1 Polyclonal Antibody - Product Information

Application	IHC-P
Primary Accession	P56199
Reactivity	Human
Host	Rabbit
Clonality	Polyclonal

Integrin α 1 Polyclonal Antibody - Additional Information**Gene ID** 3672**Other Names**

Integrin alpha-1 (CD49 antigen-like family member A) (Laminin and collagen receptor) (VLA-1) (CD antigen CD49a)

Dilution

IHC-P~~N/A

Format

Liquid in PBS containing 50% glycerol, 0.5% BSA and 0.09% (W/V) sodium azide.

Storage Conditions

-20°C

Integrin α 1 Polyclonal Antibody - Protein Information**Name** ITGA1**Function**

Integrin alpha-1/beta-1 is a receptor for laminin and collagen. It recognizes the proline-hydroxylated sequence G-F-P-G-E-R in collagen. Involved in anchorage-dependent, negative regulation of EGF-stimulated cell growth.

Cellular Location

Membrane; Single-pass type I membrane protein.

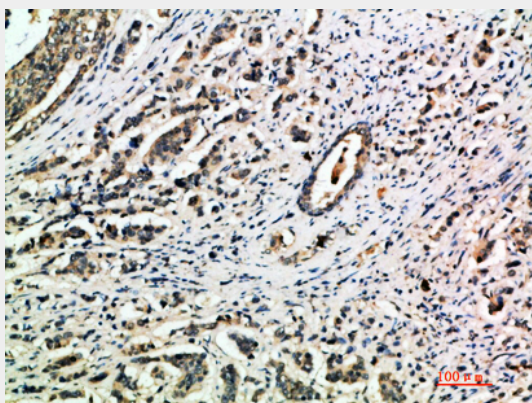
Integrin α 1 Polyclonal Antibody - Protocols

Provided below are standard protocols that you may find useful for product applications.

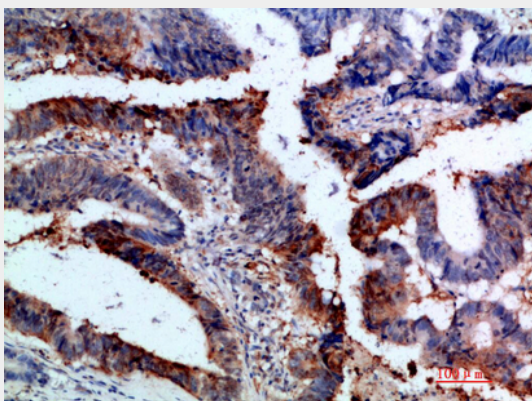
- [Western Blot](#)
- [Blocking Peptides](#)

- [Dot Blot](#)
- [Immunohistochemistry](#)
- [Immunofluorescence](#)
- [Immunoprecipitation](#)
- [Flow Cytometry](#)
- [Cell Culture](#)

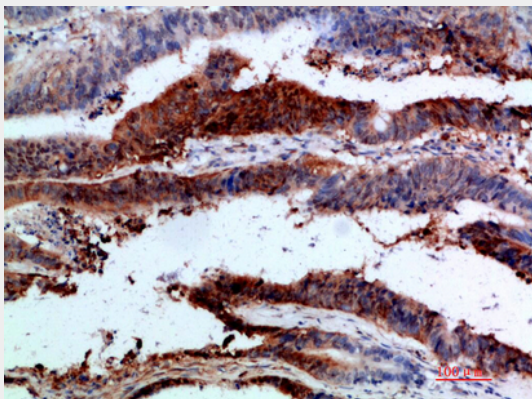
Integrin $\alpha 1$ Polyclonal Antibody - Images



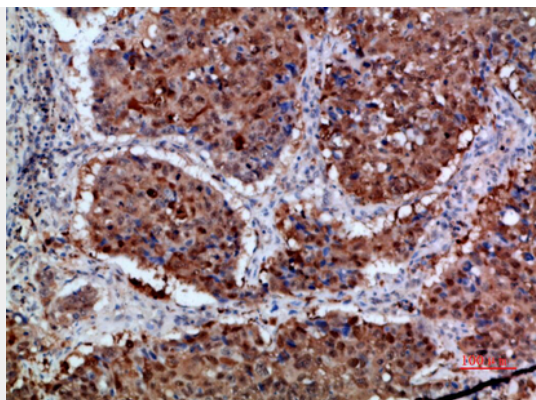
Immunohistochemical analysis of paraffin-embedded human-breast-cancer, antibody was diluted at 1:200



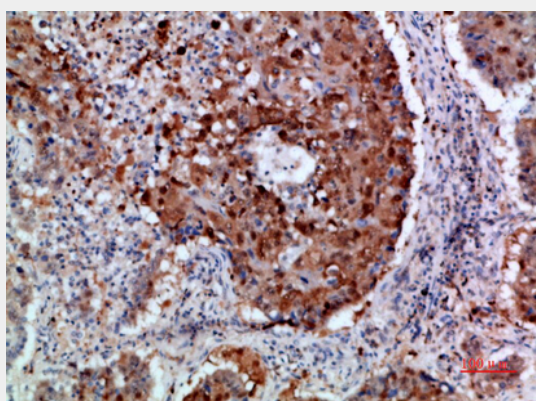
Immunohistochemical analysis of paraffin-embedded human-colon-cancer, antibody was diluted at 1:200



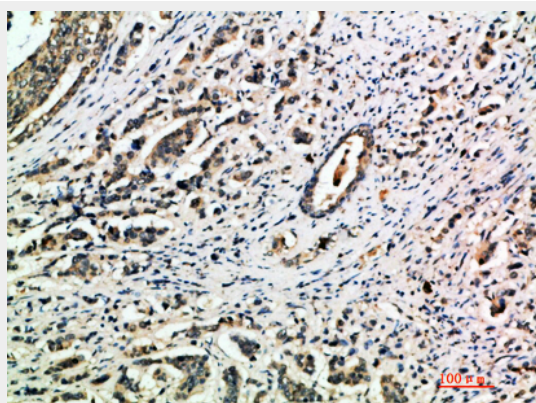
Immunohistochemical analysis of paraffin-embedded human-colon-cancer, antibody was diluted at 1:200



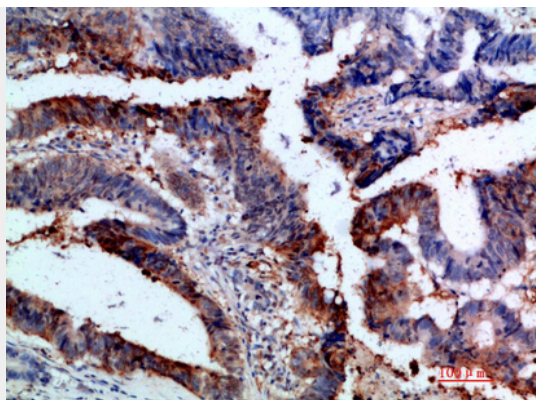
Immunohistochemical analysis of paraffin-embedded human-lung-cancer, antibody was diluted at 1:200



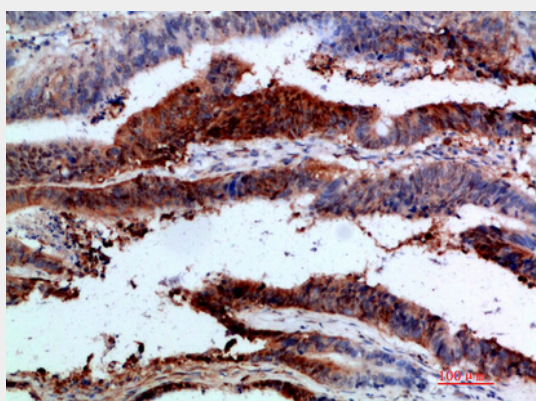
Immunohistochemical analysis of paraffin-embedded human-lung-cancer, antibody was diluted at 1:200



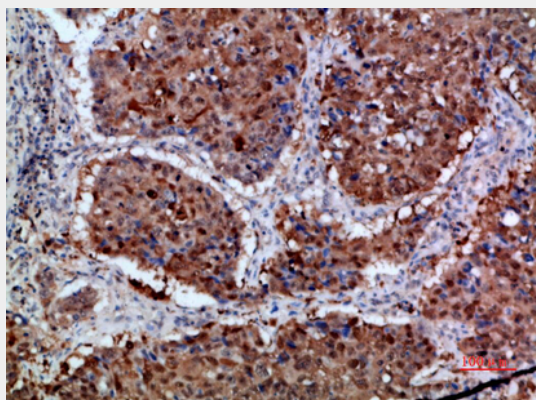
Immunohistochemical analysis of paraffin-embedded human-breast-cancer, antibody was diluted at 1:200



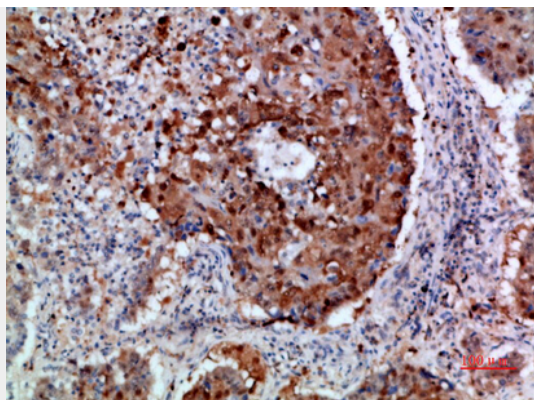
Immunohistochemical analysis of paraffin-embedded human-colon-cancer, antibody was diluted at 1:200



Immunohistochemical analysis of paraffin-embedded human-colon-cancer, antibody was diluted at 1:200



Immunohistochemical analysis of paraffin-embedded human-lung-cancer, antibody was diluted at 1:200



Immunohistochemical analysis of paraffin-embedded human-lung-cancer, antibody was diluted at 1:200

Integrin α 1 Polyclonal Antibody - Background

Integrin alpha-1/beta-1 is a receptor for laminin and collagen. It recognizes the proline-hydroxylated sequence G-F-P-G- E-R in collagen. Involved in anchorage-dependent, negative regulation of EGF-stimulated cell growth.