

**SOCS-3 Polyclonal Antibody**  
**Catalog # AP74099****Specification**

---

**SOCS-3 Polyclonal Antibody - Product Information**

Application	IHC-P
Primary Accession	<a href="#">O14543</a>
Reactivity	Human, Mouse, Rat
Host	Rabbit
Clonality	Polyclonal

**SOCS-3 Polyclonal Antibody - Additional Information****Gene ID** 9021**Other Names**

Suppressor of cytokine signaling 3 (SOCS-3) (Cytokine-inducible SH2 protein 3) (CIS-3)  
(STAT-induced STAT inhibitor 3) (SSI-3)

**Dilution**

IHC-P~~N/A

**Format**

Liquid in PBS containing 50% glycerol, 0.5% BSA and 0.09% (W/V) sodium azide.

**Storage Conditions**

-20°C

**SOCS-3 Polyclonal Antibody - Protein Information****Name** SOCS3 ([HGNC:19391](#))**Synonyms** CIS3, SSI3**Function**

SOCS family proteins form part of a classical negative feedback system that regulates cytokine signal transduction. SOCS3 is involved in negative regulation of cytokines that signal through the JAK/STAT pathway. Inhibits cytokine signal transduction by binding to tyrosine kinase receptors including IL6ST/gp130, LIF, erythropoietin, insulin, IL12, GCSF and leptin receptors. Binding to JAK2 inhibits its kinase activity and regulates IL6 signaling. Suppresses fetal liver erythropoiesis. Regulates onset and maintenance of allergic responses mediated by T-helper type 2 cells (By similarity). Probable substrate recognition component of a SCF-like ECS (Elongin BC-CUL2/5-SOCS-box protein) E3 ubiquitin-protein ligase complex which mediates the ubiquitination and subsequent proteasomal degradation of target proteins (PubMed:<a href="http://www.uniprot.org/citations/15601820" target="\_blank">15601820</a>).

**Tissue Location**

Widely expressed with high expression in heart, placenta, skeletal muscle, peripheral blood

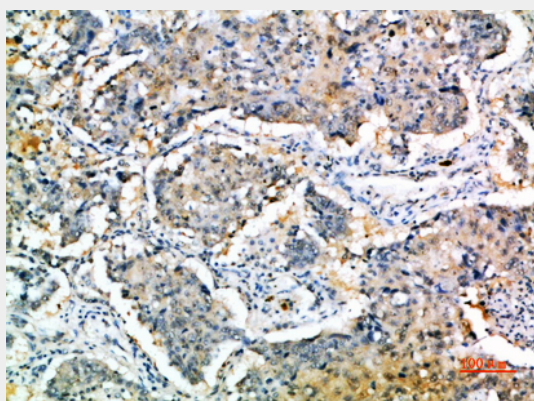
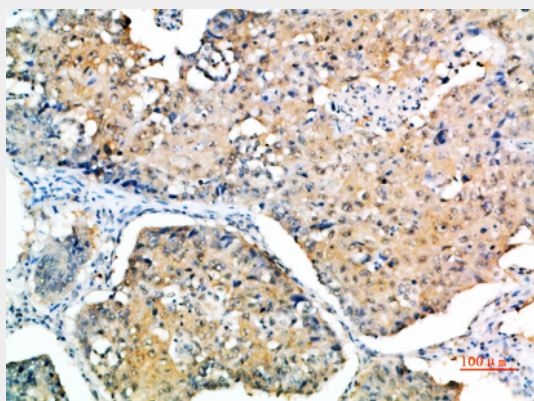
leukocytes, fetal and adult lung, and fetal liver and kidney. Lower levels in thymus

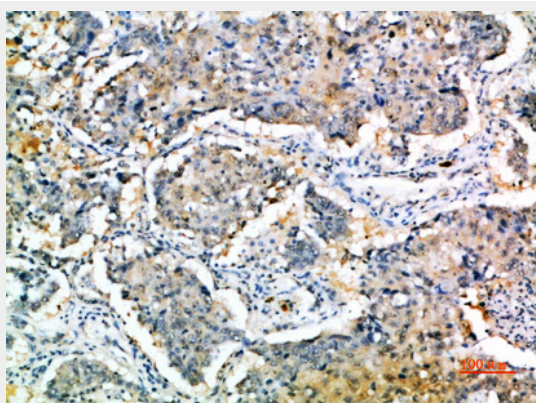
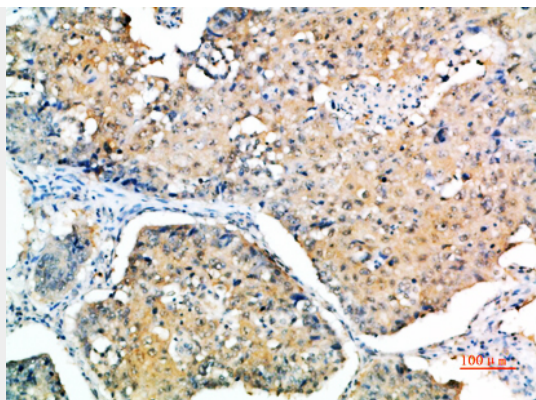
### SOCS-3 Polyclonal Antibody - Protocols

Provided below are standard protocols that you may find useful for product applications.

- [Western Blot](#)
- [Blocking Peptides](#)
- [Dot Blot](#)
- [Immunohistochemistry](#)
- [Immunofluorescence](#)
- [Immunoprecipitation](#)
- [Flow Cytometry](#)
- [Cell Culture](#)

### SOCS-3 Polyclonal Antibody - Images





### **SOCS-3 Polyclonal Antibody - Background**

SOCS family proteins form part of a classical negative feedback system that regulates cytokine signal transduction. SOCS3 is involved in negative regulation of cytokines that signal through the JAK/STAT pathway. Inhibits cytokine signal transduction by binding to tyrosine kinase receptors including gp130, LIF, erythropoietin, insulin, IL12, GCSF and leptin receptors. Binding to JAK2 inhibits its kinase activity. Suppresses fetal liver erythropoiesis. Regulates onset and maintenance of allergic responses mediated by T-helper type 2 cells. Regulates IL-6 signaling in vivo (By similarity). Probable substrate recognition component of a SCF-like ECS (Elongin BC-CUL2/5-SOCS-box protein) E3 ubiquitin-protein ligase complex which mediates the ubiquitination and subsequent proteasomal degradation of target proteins. Seems to recognize IL6ST (By similarity).