

**CD151 Polyclonal Antibody**  
**Catalog # AP74115****Specification**

---

**CD151 Polyclonal Antibody - Product Information**

Application	IHC-P
Primary Accession	<a href="#">P48509</a>
Reactivity	Human, Mouse, Rat
Host	Rabbit
Clonality	Polyclonal

**CD151 Polyclonal Antibody - Additional Information****Gene ID** 977**Other Names**

CD151 antigen (GP27) (Membrane glycoprotein SFA-1) (Platelet-endothelial tetraspan antigen 3) (PETA-3) (Tetraspanin-24) (Tspan-24) (CD antigen CD151)

**Dilution**

IHC-P~~N/A

**Format**

Liquid in PBS containing 50% glycerol, 0.5% BSA and 0.09% (W/V) sodium azide.

**Storage Conditions**

-20°C

**CD151 Polyclonal Antibody - Protein Information****Name** CD151**Synonyms** TSPAN24**Function**

Structural component of specialized membrane microdomains known as tetraspanin-enriched microdomains (TERMs), which act as platforms for receptor clustering and signaling. Plays a role in various cellular and molecular mechanism through its association with both integrin and non-integrin proteins. These interactions facilitate critical cellular functions, including cell-to-cell communication, wound healing, platelet aggregation, trafficking, cell motility, and angiogenesis (PubMed:<a href="http://www.uniprot.org/citations/17045834" target="\_blank">17045834</a>, PubMed:<a href="http://www.uniprot.org/citations/24723389" target="\_blank">24723389</a>, PubMed:<a href="http://www.uniprot.org/citations/31488507" target="\_blank">31488507</a>). Via interaction with JAM-A/F11R and integrin ITGA3:ITGB1, promotes the recruitment of signaling molecules such as RAC1, CDC42 and RhoGTPases to facilitate the polarization of epithelial cells and the reorganization of the actin cytoskeleton, which are critical steps in cell migration process (PubMed:<a href="http://www.uniprot.org/citations/22843693" target="\_blank">22843693</a>, PubMed:<a href="http://www.uniprot.org/citations/35067832" target="\_blank">35067832</a>).

Regulates the glycosylation pattern of ITGA3:ITGB1 thereby modulating its activity (PubMed:<a href="http://www.uniprot.org/citations/18852263" target="\_blank">18852263</a>). Plays an essential role in the maintenance of central laminin-binding integrin ITGA6:ITGB4-containing adhesion complexes (PubMed:<a href="http://www.uniprot.org/citations/31488507" target="\_blank">31488507</a>). Essential for the proper assembly of the glomerular and tubular basement membranes in kidney (PubMed:<a href="http://www.uniprot.org/citations/15265795" target="\_blank">15265795</a>). Contributes to T-cell activation by modulating integrin signaling leading to activation of downstream targets PTK2 and MAPK1/MAPK3 (PubMed:<a href="http://www.uniprot.org/citations/24723389" target="\_blank">24723389</a>).

#### **Cellular Location**

Cell membrane; Multi-pass membrane protein Note=Relocalizes to the immune synapse in T-cells upon activation

#### **Tissue Location**

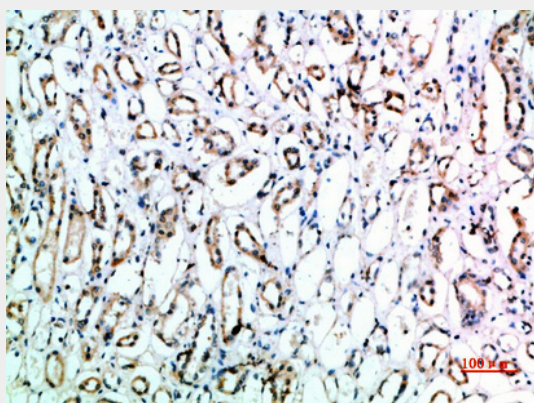
Expressed in a variety of tissues including vascular endothelium and epidermis. Expressed on erythroid cells, with a higher level of expression in erythroid precursors than on mature erythrocytes (PubMed:15265795). Acts as a sensitive T-cell activation marker (PubMed:32978478).

### **CD151 Polyclonal Antibody - Protocols**

Provided below are standard protocols that you may find useful for product applications.

- [Western Blot](#)
- [Blocking Peptides](#)
- [Dot Blot](#)
- [Immunohistochemistry](#)
- [Immunofluorescence](#)
- [Immunoprecipitation](#)
- [Flow Cytometry](#)
- [Cell Culture](#)

### **CD151 Polyclonal Antibody - Images**



### **CD151 Polyclonal Antibody - Background**

Essential for the proper assembly of the glomerular and tubular basement membranes in kidney.