

DDR2 Polyclonal Antibody
Catalog # AP74121**Specification**

DDR2 Polyclonal Antibody - Product Information

| | |
|-------------------|------------------------|
| Application | IHC |
| Primary Accession | Q16832 |
| Reactivity | Human, Mouse |
| Host | Rabbit |
| Clonality | Polyclonal |

DDR2 Polyclonal Antibody - Additional Information**Gene ID** 4921**Other Names**

Discoidin domain-containing receptor 2 (Discoidin domain receptor 2) (EC 2.7.10.1) (CD167 antigen-like family member B) (Discoidin domain-containing receptor tyrosine kinase 2) (Neurotrophic tyrosine kinase, receptor-related 3) (Receptor protein-tyrosine kinase TKT) (Tyrosine-protein kinase TYRO10) (CD antigen CD167b)

Dilution

IHC~~IHC-p 1:50-200, ELISA 1:10000-20000

Format

Liquid in PBS containing 50% glycerol, 0.5% BSA and 0.09% (W/V) sodium azide.

Storage Conditions

-20°C

DDR2 Polyclonal Antibody - Protein Information**Name** DDR2**Synonyms** NTRKR3, TKT, TYRO10**Function**

Tyrosine kinase involved in the regulation of tissues remodeling (PubMed:30449416). It functions as a cell surface receptor for fibrillar collagen and regulates cell differentiation, remodeling of the extracellular matrix, cell migration and cell proliferation. Required for normal bone development. Regulates osteoblast differentiation and chondrocyte maturation via a signaling pathway that involves MAP kinases and leads to the activation of the transcription factor RUNX2. Regulates remodeling of the extracellular matrix by up- regulation of the collagenases MMP1, MMP2 and MMP13, and thereby facilitates cell migration and tumor cell invasion. Promotes fibroblast migration and proliferation, and thereby contributes to cutaneous wound healing.

Cellular Location

Cell membrane; Single-pass type I membrane protein

Tissue Location

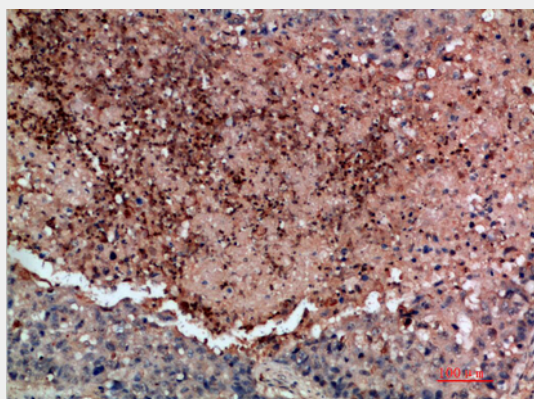
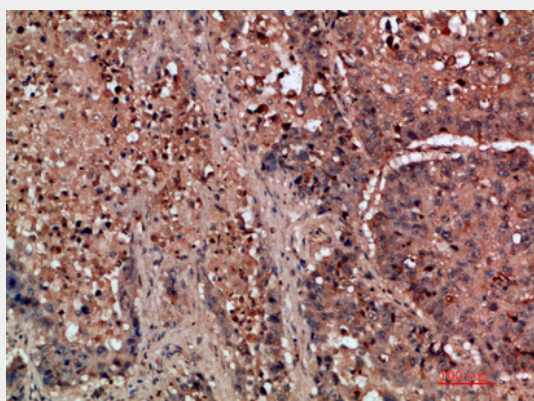
Detected in osteocytes, osteoblastic cells in subchondral bone, bone lining cells, tibia and cartilage (at protein level). Detected at high levels in heart and lung, and at low levels in brain, placenta, liver, skeletal muscle, pancreas, and kidney

DDR2 Polyclonal Antibody - Protocols

Provided below are standard protocols that you may find useful for product applications.

- [Western Blot](#)
- [Blocking Peptides](#)
- [Dot Blot](#)
- [Immunohistochemistry](#)
- [Immunofluorescence](#)
- [Immunoprecipitation](#)
- [Flow Cytometry](#)
- [Cell Culture](#)

DDR2 Polyclonal Antibody - Images



DDR2 Polyclonal Antibody - Background

Tyrosine kinase that functions as cell surface receptor for fibrillar collagen and regulates cell

differentiation, remodeling of the extracellular matrix, cell migration and cell proliferation. Required for normal bone development. Regulates osteoblast differentiation and chondrocyte maturation via a signaling pathway that involves MAP kinases and leads to the activation of the transcription factor RUNX2. Regulates remodeling of the extracellular matrix by up-regulation of the collagenases MMP1, MMP2 and MMP13, and thereby facilitates cell migration and tumor cell invasion. Promotes fibroblast migration and proliferation, and thereby contributes to cutaneous wound healing.