

**CD231 Polyclonal Antibody**  
**Catalog # AP74129****Specification**

---

**CD231 Polyclonal Antibody - Product Information**

Application	IHC-P
Primary Accession	<a href="#">P41732</a>
Reactivity	Human, Mouse, Rat
Host	Rabbit
Clonality	Polyclonal

**CD231 Polyclonal Antibody - Additional Information****Gene ID** 7102**Other Names**

Tetraspanin-7 (Tspan-7) (Cell surface glycoprotein A15) (Membrane component chromosome X surface marker 1) (T-cell acute lymphoblastic leukemia-associated antigen 1) (TALLA-1) (Transmembrane 4 superfamily member 2) (CD antigen CD231)

**Dilution**

IHC-P~~N/A

**Format**

Liquid in PBS containing 50% glycerol, 0.5% BSA and 0.09% (W/V) sodium azide.

**Storage Conditions**

-20°C

**CD231 Polyclonal Antibody - Protein Information****Name** TSPAN7**Synonyms** A15, DXS1692E, MXS1, TM4SF2**Function**

May be involved in cell proliferation and cell motility.

**Cellular Location**

Membrane; Multi-pass membrane protein.

**Tissue Location**

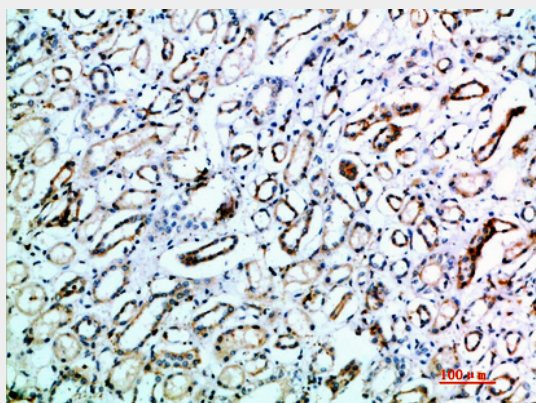
Not solely expressed in T-cells. Expressed in acute myelocytic leukemia cells of some patients

**CD231 Polyclonal Antibody - Protocols**

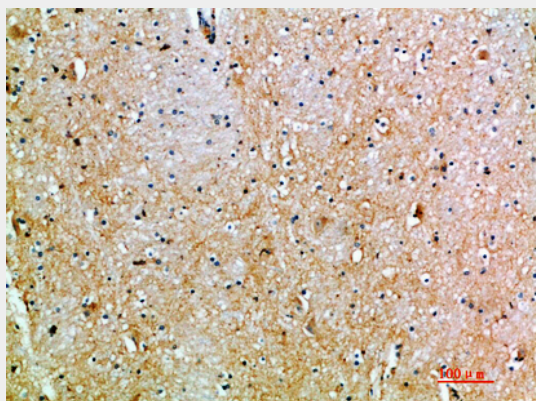
Provided below are standard protocols that you may find useful for product applications.

- [Western Blot](#)
- [Blocking Peptides](#)
- [Dot Blot](#)
- [Immunohistochemistry](#)
- [Immunofluorescence](#)
- [Immunoprecipitation](#)
- [Flow Cytometry](#)
- [Cell Culture](#)

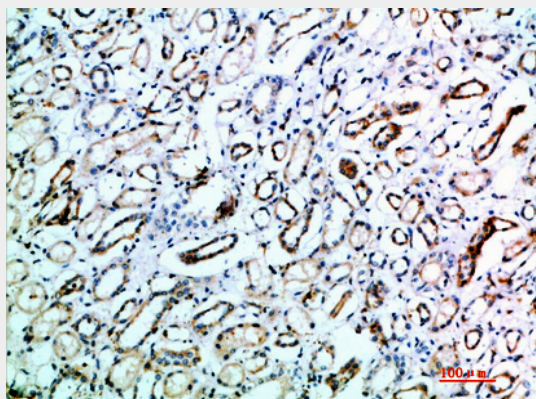
#### **CD231 Polyclonal Antibody - Images**



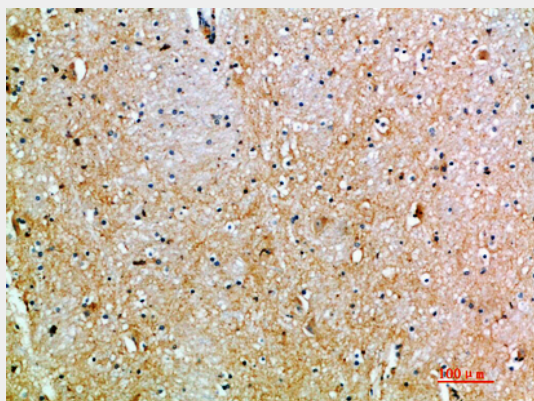
Immunohistochemical analysis of paraffin-embedded human-kidney, antibody was diluted at 1:200



Immunohistochemical analysis of paraffin-embedded human-brain, antibody was diluted at 1:200



Immunohistochemical analysis of paraffin-embedded human-kidney, antibody was diluted at 1:200



Immunohistochemical analysis of paraffin-embedded human-brain, antibody was diluted at 1:200

#### **CD231 Polyclonal Antibody - Background**

May be involved in cell proliferation and cell motility.