

APOA5 Antibody (N-term)
Purified Rabbit Polyclonal Antibody (Pab)
Catalog # AP7412a**Specification**

APOA5 Antibody (N-term) - Product Information

Application	IHC-P, WB,E
Primary Accession	Q6Q788
Reactivity	Human
Host	Rabbit
Clonality	Polyclonal
Isotype	Rabbit IgG
Calculated MW	41213
Antigen Region	22-52

APOA5 Antibody (N-term) - Additional Information**Gene ID** 116519**Other Names**

Apolipoprotein A-V, Apo-AV, ApoA-V, Apolipoprotein A5, Regeneration-associated protein 3, APOA5, RAP3

Target/Specificity

This APOA5 antibody is generated from rabbits immunized with a KLH conjugated synthetic peptide between 22-52 amino acids from the N-terminal region of human APOA5.

Dilution

IHC-P~~1:10~50

WB~~1:1000

E~~Use at an assay dependent concentration.

Format

Purified polyclonal antibody supplied in PBS with 0.09% (W/V) sodium azide. This antibody is prepared by Saturated Ammonium Sulfate (SAS) precipitation followed by dialysis against PBS.

Storage

Maintain refrigerated at 2-8°C for up to 2 weeks. For long term storage store at -20°C in small aliquots to prevent freeze-thaw cycles.

Precautions

APOA5 Antibody (N-term) is for research use only and not for use in diagnostic or therapeutic procedures.

APOA5 Antibody (N-term) - Protein Information**Name** APOA5

Synonyms RAP3

Function Minor apolipoprotein mainly associated with HDL and to a lesser extent with VLDL. May also be associated with chylomicrons. Important determinant of plasma triglyceride (TG) levels by both being a potent stimulator of apo-CII lipoprotein lipase (LPL) TG hydrolysis and an inhibitor of the hepatic VLDL-TG production rate (without affecting the VLDL-apoB production rate) (By similarity). Activates poorly lecithin:cholesterol acyltransferase (LCAT) and does not enhance efflux of cholesterol from macrophages. Binds heparin (PubMed:[17326667](#)).

Cellular Location

Secreted. Early endosome. Late endosome. Golgi apparatus, trans-Golgi network. Note=In the presence of SORL1, internalized to early endosomes, sorted in a retrograde fashion to late endosomes, from which a portion is sent to lysosomes and degradation, another portion is sorted to the trans-Golgi network

Tissue Location

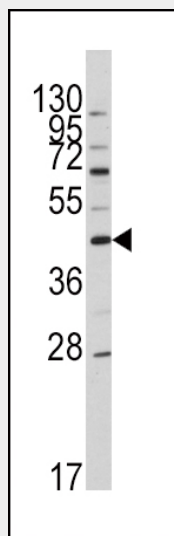
Liver and plasma.

APOA5 Antibody (N-term) - Protocols

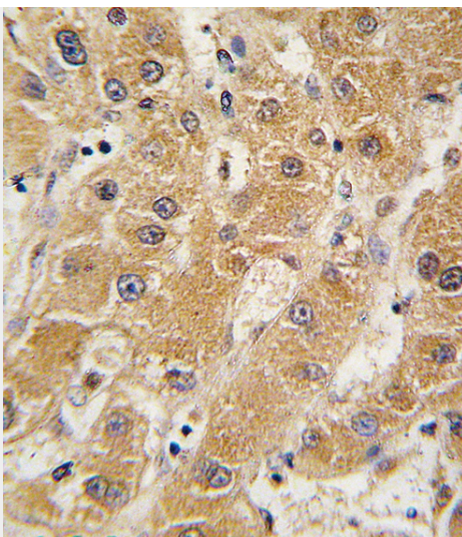
Provided below are standard protocols that you may find useful for product applications.

- [Western Blot](#)
- [Blocking Peptides](#)
- [Dot Blot](#)
- [Immunohistochemistry](#)
- [Immunofluorescence](#)
- [Immunoprecipitation](#)
- [Flow Cytometry](#)
- [Cell Culture](#)

APOA5 Antibody (N-term) - Images



Western blot analysis of anti-APOA5 Antibody (N-term) (Cat.#AP7412a) in HL60 cell line lysates (35ug/lane).APOA5(arrow) was detected using the purified Pab.



Formalin-fixed and paraffin-embedded human hepatocarcinoma tissue reacted with APOA5 antibody (N-term) (Cat.#AP7412a), which was peroxidase-conjugated to the secondary antibody, followed by DAB staining. This data demonstrates the use of this antibody for immunohistochemistry; clinical relevance has not been evaluated.

APOA5 Antibody (N-term) - Background

APOA5 is an apolipoprotein and an important determinant of plasma triglyceride levels, a major risk factor for coronary artery disease. It is a component of high density lipoprotein and is highly similar to a rat protein that is upregulated in response to liver injury.

APOA5 Antibody (N-term) - References

Dorfmeister,B., (er) Arterioscler. Thromb. Vasc. Biol. (2008) In press PUBMED 18635818
Wang,J., (er) Hum. Mol. Genet. (2008) In press
Hubacek,J.A., Clin. Chem. Lab. Med. 46 (6), 773-777 (2008)