

CD236 Polyclonal Antibody
Catalog # AP74133**Specification**

CD236 Polyclonal Antibody - Product Information

Application	IHC
Primary Accession	P04921
Reactivity	Human
Host	Rabbit
Clonality	Polyclonal

CD236 Polyclonal Antibody - Additional Information**Gene ID** 2995**Other Names**

Glycophorin-C (Glycoconnectin) (Glycophorin-D) (GPD) (Glycoprotein beta) (PAS-2') (Sialoglycoprotein D) (CD antigen CD236)

Dilution

IHC~~IHC-p 1:50-200, ELISA 1:10000-20000

Format

Liquid in PBS containing 50% glycerol, 0.5% BSA and 0.09% (W/V) sodium azide.

Storage Conditions

-20°C

CD236 Polyclonal Antibody - Protein Information**Name** GYPC**Synonyms** GLPC, GPC**Function**

This protein is a minor sialoglycoprotein in human erythrocyte membranes. The blood group Gerbich antigens and receptors for Plasmodium falciparum merozoites are most likely located within the extracellular domain. Glycophorin-C plays an important role in regulating the stability of red cells.

Cellular Location

Cell membrane; Single-pass type III membrane protein. Note=Linked to the membrane via band 4.1

Tissue Location

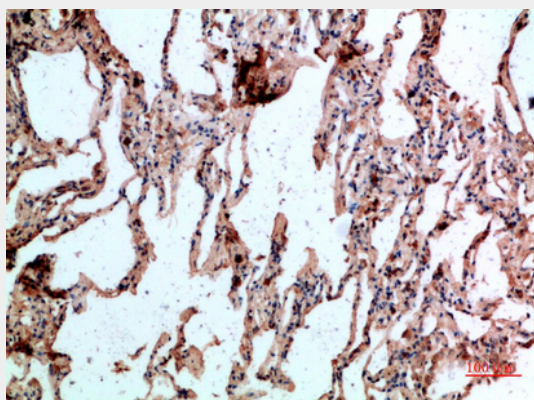
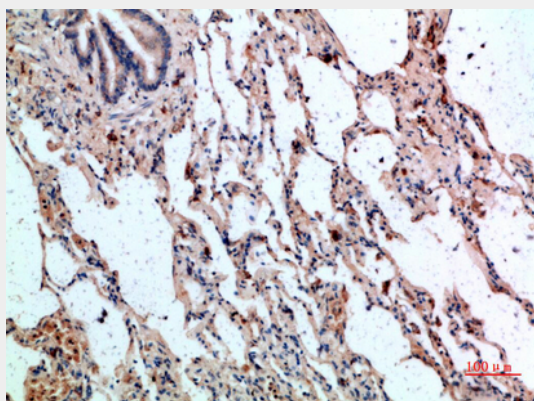
Glycophorin-C is expressed in erythrocytes. Glycophorin-D and IsoGPC are ubiquitously expressed

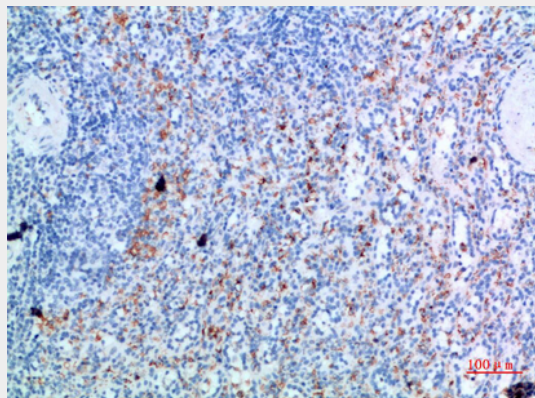
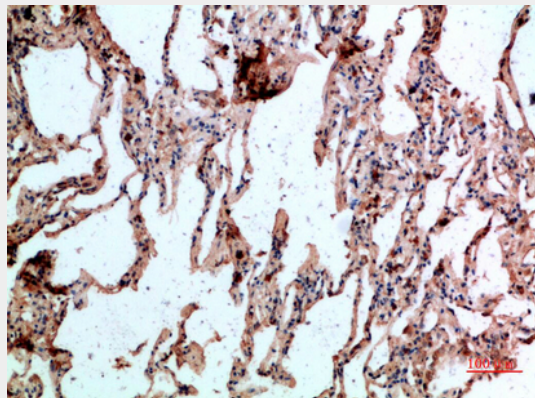
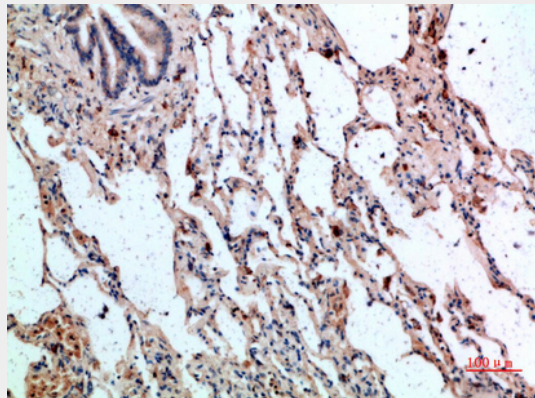
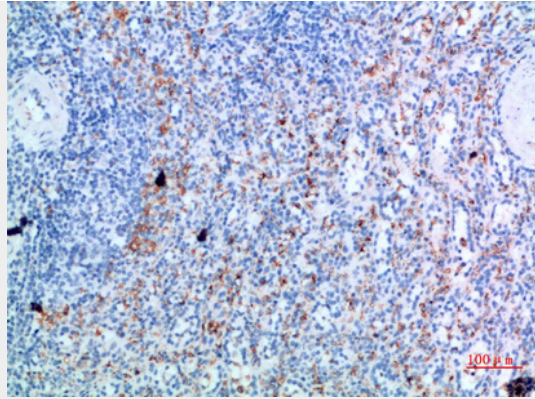
CD236 Polyclonal Antibody - Protocols

Provided below are standard protocols that you may find useful for product applications.

- [Western Blot](#)
- [Blocking Peptides](#)
- [Dot Blot](#)
- [Immunohistochemistry](#)
- [Immunofluorescence](#)
- [Immunoprecipitation](#)
- [Flow Cytometry](#)
- [Cell Culture](#)

CD236 Polyclonal Antibody - Images





CD236 Polyclonal Antibody - Background

This protein is a minor sialoglycoprotein in human erythrocyte membranes. The blood group Gerbich antigens and receptors for Plasmodium falciparum merozoites are most likely located within the extracellular domain. Glycophorin-C plays an important role in regulating the stability of red cells.