

LT- β Polyclonal Antibody
Catalog # AP74154**Specification**

LT- β Polyclonal Antibody - Product Information

Application	IHC-P
Primary Accession	Q06643
Reactivity	Human
Host	Rabbit
Clonality	Polyclonal

LT- β Polyclonal Antibody - Additional Information**Gene ID** 4050**Other Names**

Lymphotoxin-beta (LT-beta) (Tumor necrosis factor C) (TNF-C) (Tumor necrosis factor ligand superfamily member 3)

Dilution

IHC-P~~N/A

Format

Liquid in PBS containing 50% glycerol, 0.5% BSA and 0.09% (W/V) sodium azide.

Storage Conditions

-20°C

LT- β Polyclonal Antibody - Protein Information**Name** LTB**Synonyms** TNFC, TNFSF3**Function**

Cytokine that binds to LTBR/TNFRSF3 (PubMed:24248355). May play a specific role in immune response regulation. Provides the membrane anchor for the attachment of the heterotrimeric complex to the cell surface. Isoform 2 is probably non-functional.

Cellular Location

Membrane; Single-pass type II membrane protein

Tissue Location

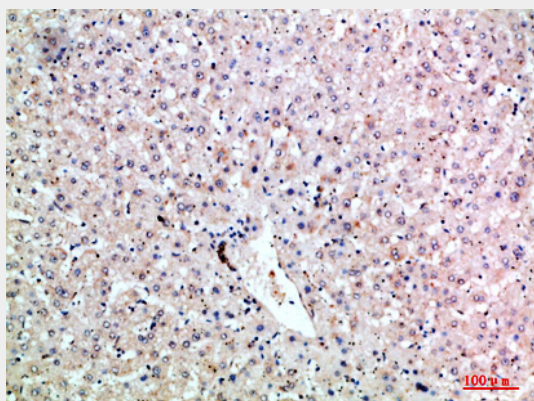
Spleen and thymus.

LT- β Polyclonal Antibody - Protocols

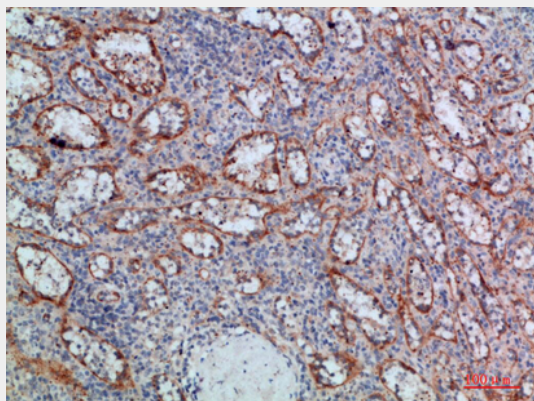
Provided below are standard protocols that you may find useful for product applications.

- [Western Blot](#)
- [Blocking Peptides](#)
- [Dot Blot](#)
- [Immunohistochemistry](#)
- [Immunofluorescence](#)
- [Immunoprecipitation](#)
- [Flow Cytometry](#)
- [Cell Culture](#)

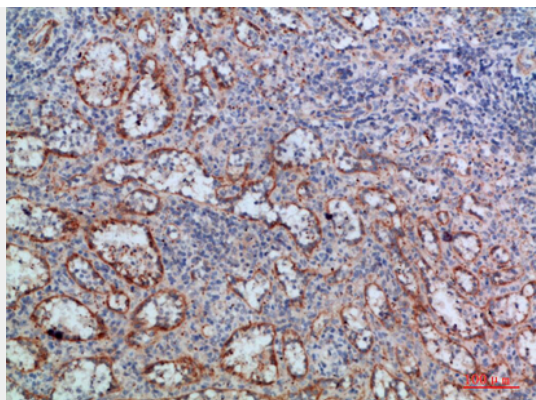
LT- β Polyclonal Antibody - Images



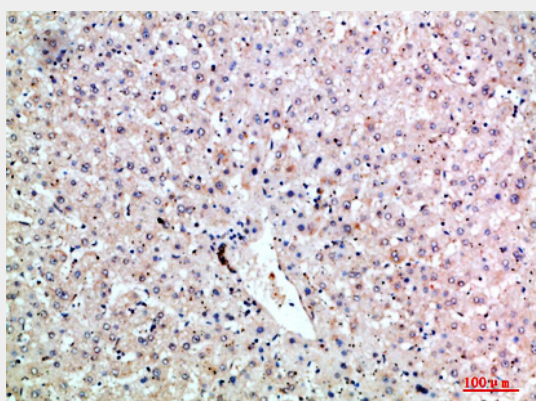
Immunohistochemical analysis of paraffin-embedded human-liver, antibody was diluted at 1:200



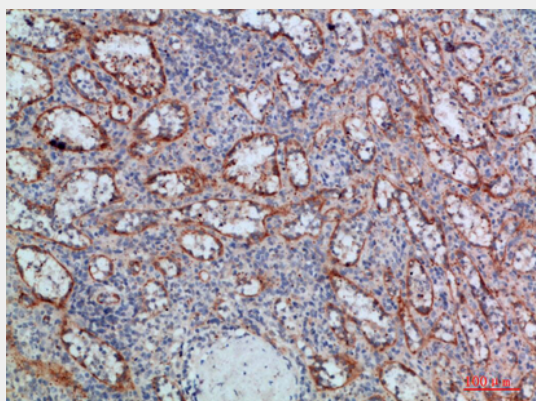
Immunohistochemical analysis of paraffin-embedded human-spleen, antibody was diluted at 1:200



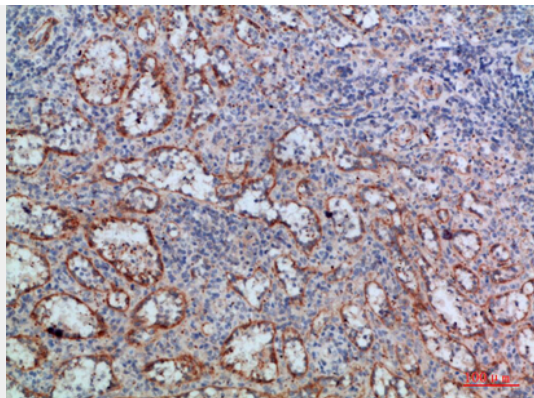
Immunohistochemical analysis of paraffin-embedded human-spleen, antibody was diluted at 1:200



Immunohistochemical analysis of paraffin-embedded human-liver, antibody was diluted at 1:200



Immunohistochemical analysis of paraffin-embedded human-spleen, antibody was diluted at 1:200



Immunohistochemical analysis of paraffin-embedded human-spleen, antibody was diluted at 1:200

LT- β Polyclonal Antibody - Background

Cytokine that binds to LTBR/TNFRSF3. May play a specific role in immune response regulation. Provides the membrane anchor for the attachment of the heterotrimeric complex to the cell surface. Isoform 2 is probably non-functional.