

HDGF Polyclonal Antibody
Catalog # AP74157**Specification**

HDGF Polyclonal Antibody - Product Information

Application	IHC-P
Primary Accession	P51858
Reactivity	Human
Host	Rabbit
Clonality	Polyclonal

HDGF Polyclonal Antibody - Additional Information**Gene ID** 3068**Other Names**

Hepatoma-derived growth factor (HDGF) (High mobility group protein 1-like 2) (HMG-1L2)

Dilution

IHC-P~~N/A

Format

Liquid in PBS containing 50% glycerol, 0.5% BSA and 0.09% (W/V) sodium azide.

Storage Conditions

-20°C

HDGF Polyclonal Antibody - Protein Information**Name** HDGF**Synonyms** HMG1L2**Function**

[Isoform 1]: Acts as a transcriptional repressor (PubMed:17974029). Has mitogenic activity for fibroblasts (PubMed:11751870, PubMed:26845719). Heparin-binding protein (PubMed:15491618).

Cellular Location

[Isoform 1]: Nucleus. Cytoplasm. Secreted, extracellular exosome. Note=Secreted by exosomes and is located inside the exosome (PubMed:27926477). May also be secreted as free protein via an as yet unknown pathway (PubMed:27926477) [Isoform 3]: Nucleus. Cytoplasm Secreted, extracellular exosome Note=Secreted by exosomes and is located on the outer exosome surface

Tissue Location

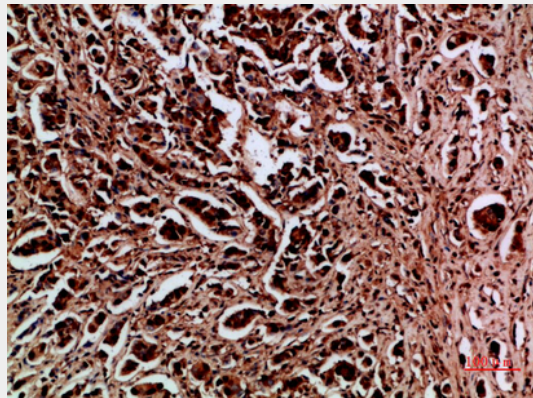
Ubiquitous..

HDGF Polyclonal Antibody - Protocols

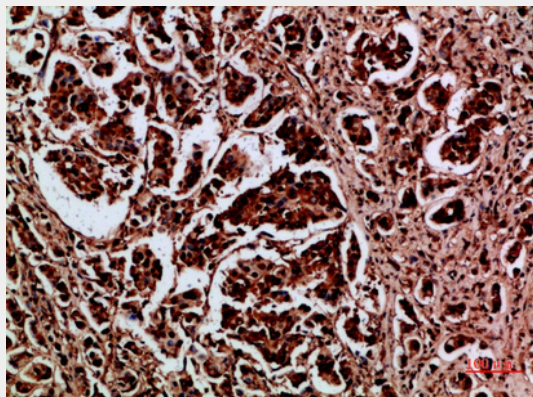
Provided below are standard protocols that you may find useful for product applications.

- [Western Blot](#)
- [Blocking Peptides](#)
- [Dot Blot](#)
- [Immunohistochemistry](#)
- [Immunofluorescence](#)
- [Immunoprecipitation](#)
- [Flow Cytometry](#)
- [Cell Culture](#)

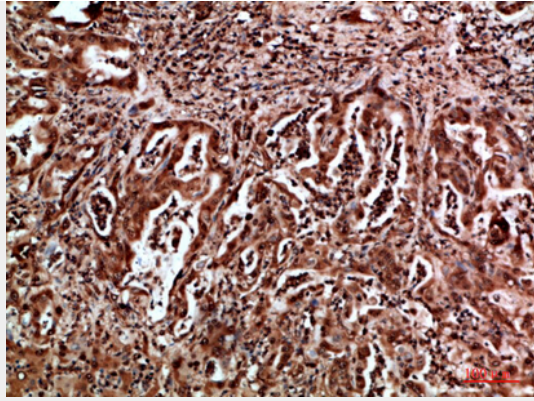
HDGF Polyclonal Antibody - Images



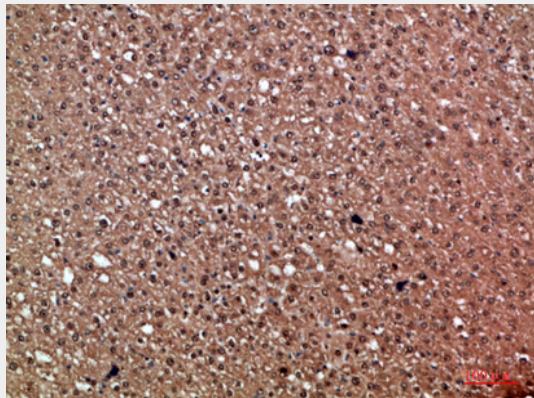
Immunohistochemical analysis of paraffin-embedded human-breast-cancer, antibody was diluted at 1:200



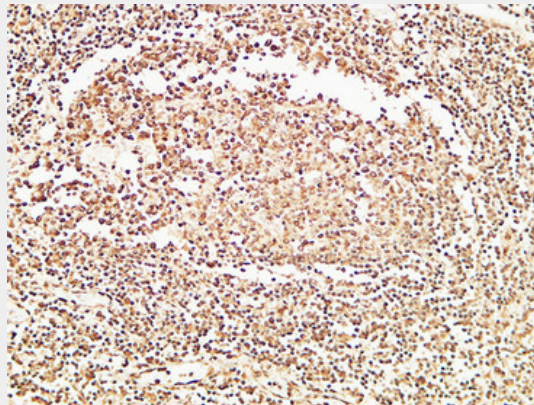
Immunohistochemical analysis of paraffin-embedded human-breast-cancer, antibody was diluted at 1:200



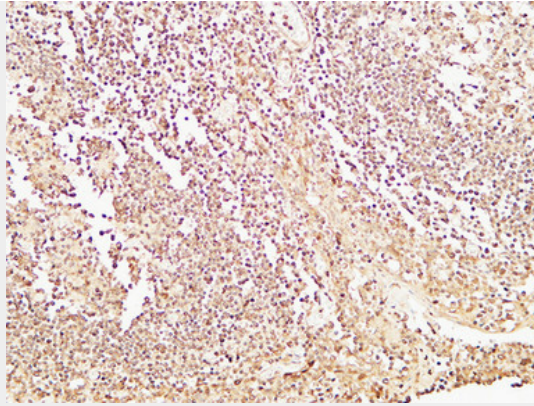
Immunohistochemical analysis of paraffin-embedded human-liver-cancer, antibody was diluted at 1:200



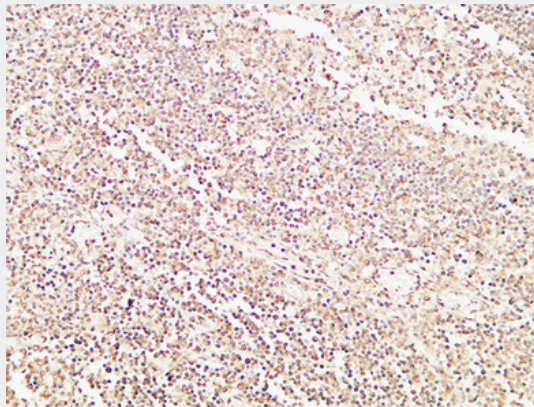
Immunohistochemical analysis of paraffin-embedded human-liver-cancer, antibody was diluted at 1:200



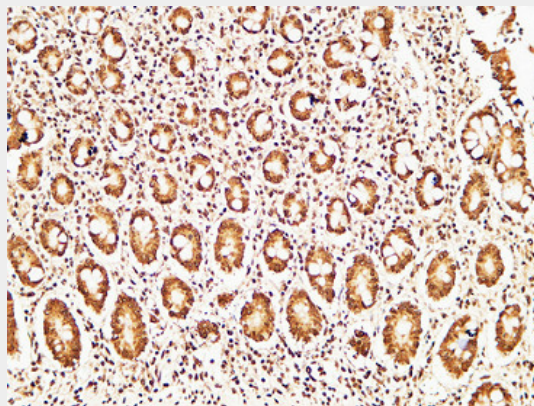
Immunohistochemical analysis of paraffin-embedded Human Amygdala. 1, Antibody was diluted at 1:200(4°,overnight). 2, High-pressure and temperature EDTA, pH8.0 was used for antigen retrieval. 3,Secondary antibody was diluted at 1:200(room temperature, 30min).



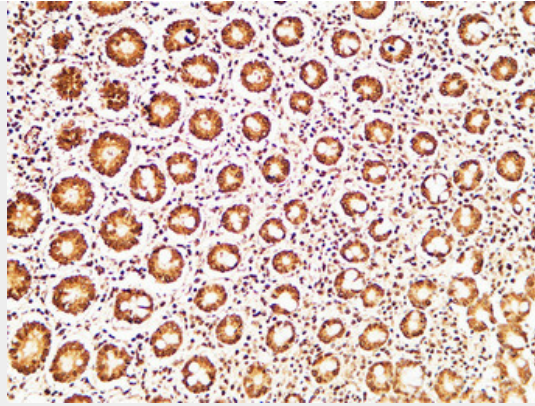
Immunohistochemical analysis of paraffin-embedded Human Amygdala. 1, Antibody was diluted at 1:200(4°,overnight). 2, High-pressure and temperature EDTA, pH8.0 was used for antigen retrieval. 3,Secondary antibody was diluted at 1:200(room temperature, 30min).



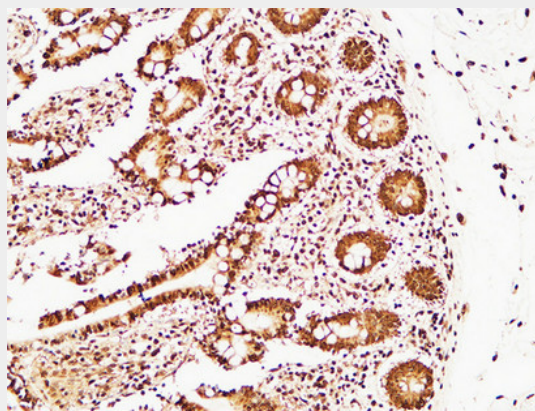
Immunohistochemical analysis of paraffin-embedded Human Amygdala. 1, Antibody was diluted at 1:200(4°,overnight). 2, High-pressure and temperature EDTA, pH8.0 was used for antigen retrieval. 3,Secondary antibody was diluted at 1:200(room temperature, 30min).



Immunohistochemical analysis of paraffin-embedded Human colon. 1, Antibody was diluted at 1:200(4°,overnight). 2, High-pressure and temperature EDTA, pH8.0 was used for antigen retrieval. 3,Secondary antibody was diluted at 1:200(room temperature, 30min).



Immunohistochemical analysis of paraffin-embedded Human colon. 1, Antibody was diluted at 1:200(4°,overnight). 2, High-pressure and temperature EDTA, pH8.0 was used for antigen retrieval. 3,Secondary antibody was diluted at 1:200(room temperature, 30min).



Immunohistochemical analysis of paraffin-embedded Human colon. 1, Antibody was diluted at 1:200(4°,overnight). 2, High-pressure and temperature EDTA, pH8.0 was used for antigen retrieval. 3,Secondary antibody was diluted at 1:200(room temperature, 30min).

HDGF Polyclonal Antibody - Background

Heparin-binding protein, with mitogenic activity for fibroblasts. Acts as a transcriptional repressor.