

**MEN1 Antibody (S128)**  
**Affinity Purified Rabbit Polyclonal Antibody (Pab)**  
**Catalog # AP7415a****Specification**

---

**MEN1 Antibody (S128) - Product Information**

Application	IHC-P, WB,E
Primary Accession	<a href="#">O00255</a>
Other Accession	<a href="#">O9WVR8</a> , <a href="#">O88559</a> , <a href="#">Q0P5I0</a> , <a href="#">NP_000235</a>
Reactivity	Human
Predicted	Bovine, Mouse, Rat
Host	Rabbit
Clonality	Polyclonal
Isotype	Rabbit IgG
Calculated MW	67497
Antigen Region	113-144

**MEN1 Antibody (S128) - Additional Information****Gene ID** 4221**Other Names**

Menin, MEN1, SCG2

**Target/Specificity**

This MEN1 antibody is generated from rabbits immunized with a KLH conjugated synthetic peptide between 113-144 amino acids from human MEN1.

**Dilution**

IHC-P~~1:10~50

WB~~1:1000

E~~Use at an assay dependent concentration.

**Format**

Purified polyclonal antibody supplied in PBS with 0.09% (W/V) sodium azide. This antibody is prepared by Saturated Ammonium Sulfate (SAS) precipitation followed by dialysis against PBS.

**Storage**

Maintain refrigerated at 2-8°C for up to 2 weeks. For long term storage store at -20°C in small aliquots to prevent freeze-thaw cycles.

**Precautions**

MEN1 Antibody (S128) is for research use only and not for use in diagnostic or therapeutic procedures.

**MEN1 Antibody (S128) - Protein Information****Name** MEN1

## Synonyms SCG2

**Function** Essential component of a MLL/SET1 histone methyltransferase (HMT) complex, a complex that specifically methylates 'Lys-4' of histone H3 (H3K4). Functions as a transcriptional regulator. Binds to the TERT promoter and represses telomerase expression. Plays a role in TGF $\beta$ 1-mediated inhibition of cell-proliferation, possibly regulating SMAD3 transcriptional activity. Represses JUND-mediated transcriptional activation on AP1 sites, as well as that mediated by NF $\kappa$ B subunit RELA. Positively regulates HOXC8 and HOXC6 gene expression. May be involved in normal hematopoiesis through the activation of HOXA9 expression (By similarity). May be involved in DNA repair.

## Cellular Location

Nucleus. Note=Concentrated in nuclear body-like structures. Relocates to the nuclear matrix upon gamma irradiation

## Tissue Location

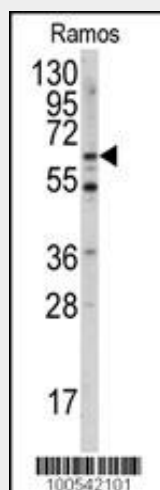
Ubiquitous.

## MEN1 Antibody (S128) - Protocols

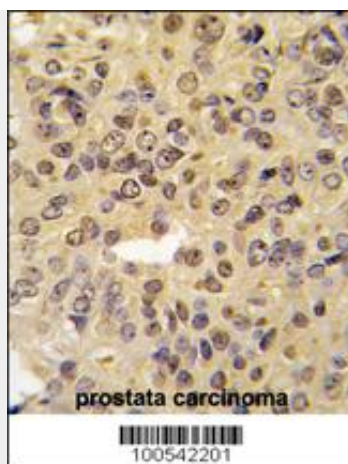
Provided below are standard protocols that you may find useful for product applications.

- [Western Blot](#)
- [Blocking Peptides](#)
- [Dot Blot](#)
- [Immunohistochemistry](#)
- [Immunofluorescence](#)
- [Immunoprecipitation](#)
- [Flow Cytometry](#)
- [Cell Culture](#)

## MEN1 Antibody (S128) - Images



Western blot analysis of anti-MEN1 Antibody (S128) (Cat.#AP7415a) in Ramos cell line lysates (35ug/lane). MEN1 (arrow) was detected using the purified Pab.



Formalin-fixed and paraffin-embedded human prostata carcinoma tissue reacted with MEN1 Antibody (S128) (Cat.#AP7415a), which was peroxidase-conjugated to the secondary antibody, followed by DAB staining. This data demonstrates the use of this antibody for immunohistochemistry; clinical relevance has not been evaluated.

#### **MEN1 Antibody (S128) - Background**

Menin (MEN1), a putative tumor suppressor associated with a syndrome known as multiple endocrine neoplasia type 1. In vitro studies have shown menin is localized to the nucleus, possesses two functional nuclear localization signals, and inhibits transcriptional activation by JunD, however, the function of this protein is not known.

#### **MEN1 Antibody (S128) - References**

Hashimoto,M., Int. J. Oncol. 33 (2), 333-340 (2008)  
Vidal,A., J Eur Acad Dermatol Venereol 22 (7), 835-838 (2008)  
Pieterman,C.R., Clin. Endocrinol. (Oxf) (2008)