

**BMP-1 Polyclonal Antibody**  
**Catalog # AP74160****Specification**

---

**BMP-1 Polyclonal Antibody - Product Information**

Application	IHC-P
Primary Accession	<a href="#">P13497</a>
Reactivity	Human, Mouse, Rat
Host	Rabbit
Clonality	Polyclonal

**BMP-1 Polyclonal Antibody - Additional Information****Gene ID** 649**Other Names**

Bone morphogenetic protein 1 (BMP-1) (EC 3.4.24.19) (Mammalian tolloid protein) (mTld)  
(Procollagen C-proteinase) (PCP)

**Dilution**

IHC-P~~N/A

**Format**

Liquid in PBS containing 50% glycerol, 0.5% BSA and 0.09% (W/V) sodium azide.

**Storage Conditions**

-20°C

**BMP-1 Polyclonal Antibody - Protein Information****Name** BMP1**Synonyms** PCOLC**Function**

Metalloprotease that plays key roles in regulating the formation of the extracellular matrix (ECM) via processing of various precursor proteins into mature functional enzymes or structural proteins (PubMed:<a href="http://www.uniprot.org/citations/33206546" target="\_blank">33206546</a>). Thereby participates in several developmental and physiological processes such as cartilage and bone formation, muscle growth and homeostasis, wound healing and tissue repair (PubMed:<a href="http://www.uniprot.org/citations/32636307" target="\_blank">32636307</a>, PubMed:<a href="http://www.uniprot.org/citations/33169406" target="\_blank">33169406</a>). Roles in ECM formation include cleavage of the C-terminal propeptides from procollagens such as procollagen I, II and III or the proteolytic activation of the enzyme lysyl oxidase LOX, necessary to formation of covalent cross- links in collagen and elastic fibers (PubMed:<a href="http://www.uniprot.org/citations/31152061" target="\_blank">31152061</a>, PubMed:<a href="http://www.uniprot.org/citations/33206546" target="\_blank">33206546</a>). Additional substrates include matricellular thrombospondin-1/THBS1 whose cleavage leads to cell adhesion

disruption and TGF-beta activation (PubMed:<a href="http://www.uniprot.org/citations/32636307" target="\_blank">32636307</a>).

#### **Cellular Location**

Golgi apparatus, trans-Golgi network. Secreted, extracellular space, extracellular matrix. Secreted.  
Note=Co-localizes with POSTN in the Golgi.

#### **Tissue Location**

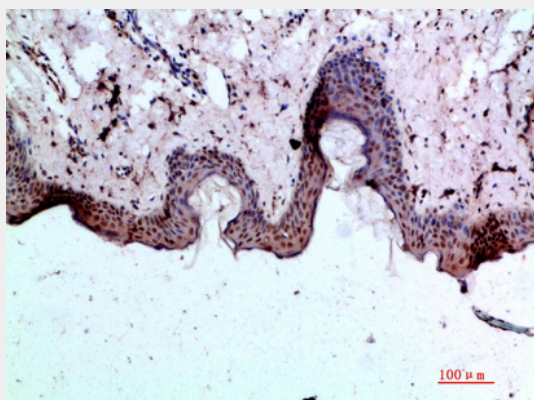
Ubiquitous.

### **BMP-1 Polyclonal Antibody - Protocols**

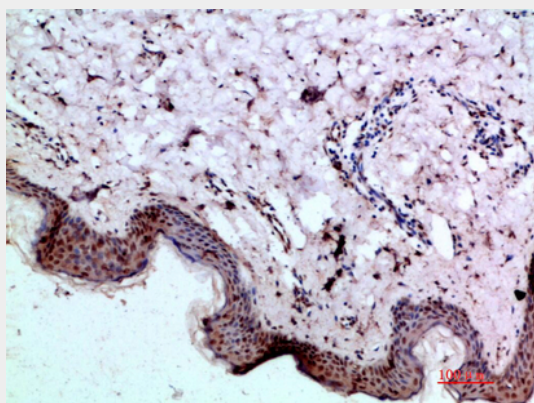
Provided below are standard protocols that you may find useful for product applications.

- [Western Blot](#)
- [Blocking Peptides](#)
- [Dot Blot](#)
- [Immunohistochemistry](#)
- [Immunofluorescence](#)
- [Immunoprecipitation](#)
- [Flow Cytometry](#)
- [Cell Culture](#)

### **BMP-1 Polyclonal Antibody - Images**



Immunohistochemical analysis of paraffin-embedded human-skin, antibody was diluted at 1:200



Immunohistochemical analysis of paraffin-embedded human-skin, antibody was diluted at 1:200

**BMP-1 Polyclonal Antibody - Background**

Cleaves the C-terminal propeptides of procollagen I, II and III. Induces cartilage and bone formation. May participate in dorsoventral patterning during early development by cleaving chordin (CHRD). Responsible for the proteolytic activation of lysyl oxidase LOX.