

**PON1 Polyclonal Antibody**  
**Catalog # AP74166****Specification**

---

**PON1 Polyclonal Antibody - Product Information**

Application	IHC-P
Primary Accession	<a href="#">P27169</a>
Reactivity	Human
Host	Rabbit
Clonality	Polyclonal

**PON1 Polyclonal Antibody - Additional Information****Gene ID** 5444**Other Names**

Serum paraoxonase/arylesterase 1 (PON 1) (EC 3.1.1.2) (EC 3.1.1.81) (EC 3.1.8.1) (Aromatic esterase 1) (A-esterase 1) (K-45) (Serum aryldialkylphosphatase 1)

**Dilution**

IHC-P~~N/A

**Format**

Liquid in PBS containing 50% glycerol, 0.5% BSA and 0.09% (W/V) sodium azide.

**Storage Conditions**

-20°C

**PON1 Polyclonal Antibody - Protein Information****Name** PON1**Synonyms** PON**Function**

Hydrolyzes the toxic metabolites of a variety of organophosphorus insecticides. Capable of hydrolyzing a broad spectrum of organophosphate substrates and lactones, and a number of aromatic carboxylic acid esters. Mediates an enzymatic protection of low density lipoproteins against oxidative modification and the consequent series of events leading to atheroma formation.

**Cellular Location**

Secreted, extracellular space.

**Tissue Location**

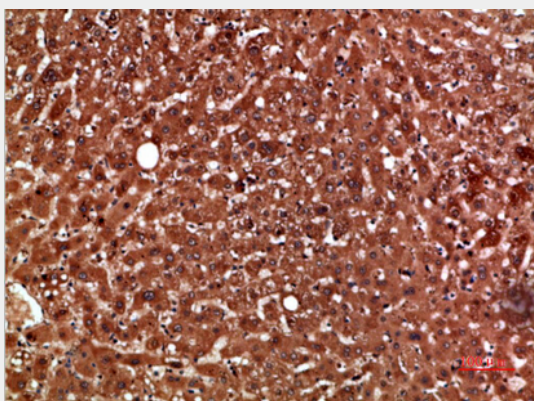
Plasma, associated with HDL (at protein level). Expressed in liver, but not in heart, brain, placenta, lung, skeletal muscle, kidney or pancreas.

## PON1 Polyclonal Antibody - Protocols

Provided below are standard protocols that you may find useful for product applications.

- [Western Blot](#)
- [Blocking Peptides](#)
- [Dot Blot](#)
- [Immunohistochemistry](#)
- [Immunofluorescence](#)
- [Immunoprecipitation](#)
- [Flow Cytometry](#)
- [Cell Culture](#)

## PON1 Polyclonal Antibody - Images



## PON1 Polyclonal Antibody - Background

Hydrolyzes the toxic metabolites of a variety of organophosphorus insecticides. Capable of hydrolyzing a broad spectrum of organophosphate substrates and lactones, and a number of aromatic carboxylic acid esters. Mediates an enzymatic protection of low density lipoproteins against oxidative modification and the consequent series of events leading to atheroma formation.