

**Abin-2 Polyclonal Antibody**  
**Catalog # AP74170****Specification**

---

**Abin-2 Polyclonal Antibody - Product Information**

Application	IHC
Primary Accession	<a href="#">Q8NFZ5</a>
Reactivity	Human, Mouse, Rat
Host	Rabbit
Clonality	Polyclonal

**Abin-2 Polyclonal Antibody - Additional Information****Gene ID** 79155**Other Names**

TNFAIP3-interacting protein 2 (A20-binding inhibitor of NF-kappa-B activation 2) (ABIN-2) (Fetal liver LKB1-interacting protein)

**Dilution**

IHC~~IHC-p 1:50-200, ELISA 1:10000-20000

**Format**

Liquid in PBS containing 50% glycerol, 0.5% BSA and 0.09% (W/V) sodium azide.

**Storage Conditions**

-20°C

**Abin-2 Polyclonal Antibody - Protein Information****Name** TNIP2 {ECO:0000312|EMBL:EAW82514.1}**Function**

Inhibits NF-kappa-B activation by blocking the interaction of RIPK1 with its downstream effector NEMO/IKBKG. Forms a ternary complex with NFKB1 and MAP3K8 but appears to function upstream of MAP3K8 in the TLR4 signaling pathway that regulates MAP3K8 activation. Involved in activation of the MEK/ERK signaling pathway during innate immune response; this function seems to be stimulus- and cell type specific. Required for stability of MAP3K8. Involved in regulation of apoptosis in endothelial cells; promotes TEK agonist-stimulated endothelial survival. May act as transcriptional coactivator when translocated to the nucleus. Enhances CHUK-mediated NF-kappa-B activation involving NF- kappa-B p50-p65 and p50-c-Rel complexes.

**Cellular Location**

Cytoplasm. Nucleus

**Tissue Location**

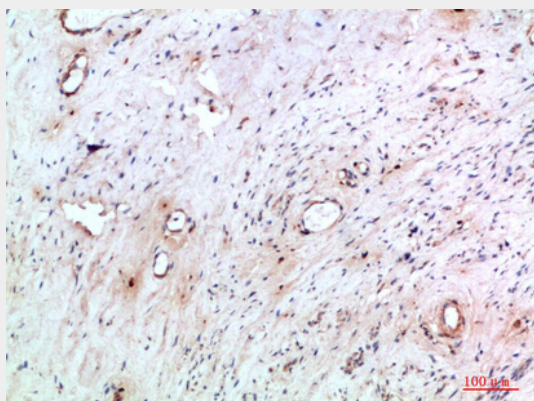
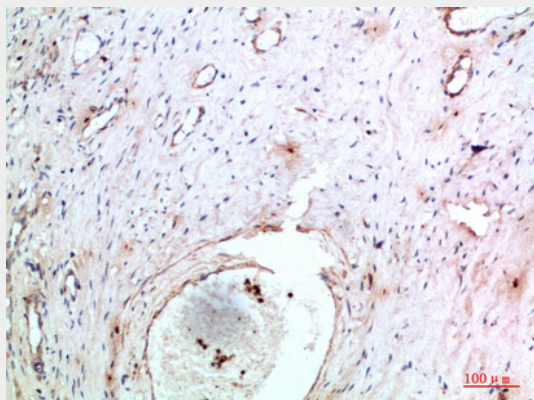
Ubiquitously expressed in all tissues examined.

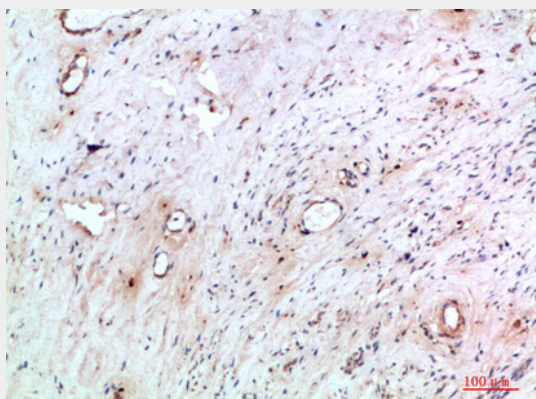
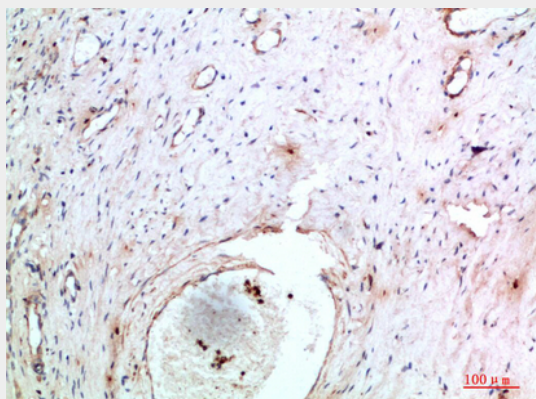
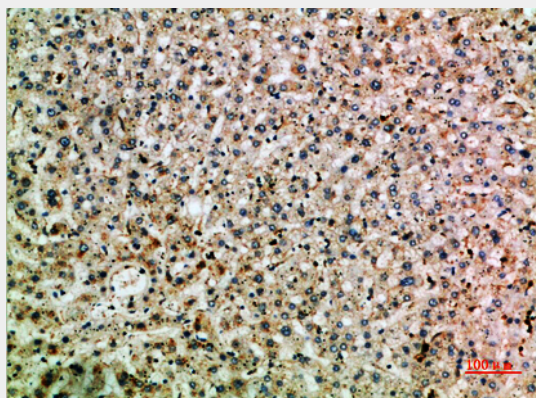
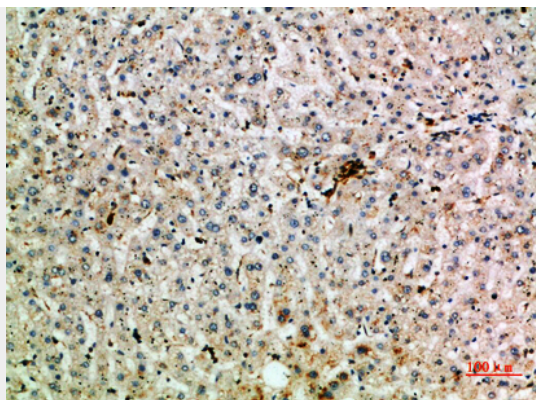
## Abin-2 Polyclonal Antibody - Protocols

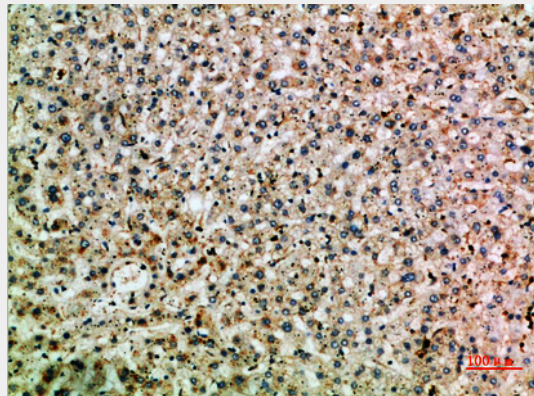
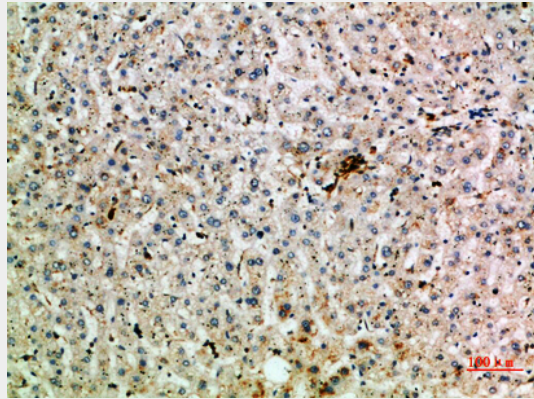
Provided below are standard protocols that you may find useful for product applications.

- [Western Blot](#)
- [Blocking Peptides](#)
- [Dot Blot](#)
- [Immunohistochemistry](#)
- [Immunofluorescence](#)
- [Immunoprecipitation](#)
- [Flow Cytometry](#)
- [Cell Culture](#)

## Abin-2 Polyclonal Antibody - Images







### **Abin-2 Polyclonal Antibody - Background**

Inhibits NF-kappa-B activation by blocking the interaction of RIPK1 with its downstream effector NEMO/IKBKG. Forms a ternary complex with NFKB1 and MAP3K8 but appears to function upstream of MAP3K8 in the TLR4 signaling pathway that regulates MAP3K8 activation. Involved in activation of the MEK/ERK signaling pathway during innate immune response; this function seems to be stimulus- and cell type specific. Required for stability of MAP3K8. Involved in regulation of apoptosis in endothelial cells; promotes TEK agonist-stimulated endothelial survival. May act as transcriptional coactivator when translocated to the nucleus. Enhances CHUK-mediated NF-kappa-B activation involving NF-kappa-B p50-p65 and p50-c-Rel complexes.