

Chordin Polyclonal Antibody
Catalog # AP74179**Specification**

Chordin Polyclonal Antibody - Product Information

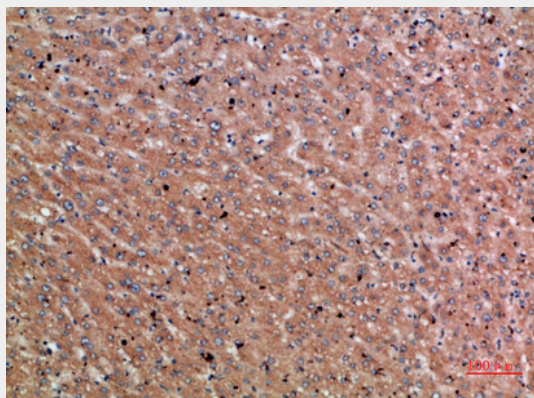
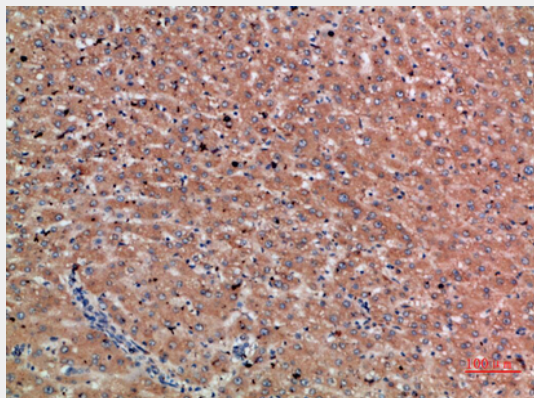
Application	IHC-P
Primary Accession	Q9H2X0
Reactivity	Human, Mouse, Rat
Host	Rabbit
Clonality	Polyclonal

Chordin Polyclonal Antibody - Additional Information**Gene ID** 8646**Other Names**
Chordin**Dilution**
IHC-P~~N/A**Format**
Liquid in PBS containing 50% glycerol, 0.5% BSA and 0.09% (W/V) sodium azide.**Storage Conditions**
-20°C**Chordin Polyclonal Antibody - Protein Information****Name** CHR D**Function**
Dorsalizing factor. Key developmental protein that dorsalizes early vertebrate embryonic tissues by binding to ventralizing TGF-beta family bone morphogenetic proteins (BMPs) and sequestering them in latent complexes (By similarity).**Cellular Location**
Secreted.**Tissue Location**
Expressed at the highest level in liver.**Chordin Polyclonal Antibody - Protocols**

Provided below are standard protocols that you may find useful for product applications.

- [Western Blot](#)
- [Blocking Peptides](#)
- [Dot Blot](#)
- [Immunohistochemistry](#)
- [Immunofluorescence](#)
- [Immunoprecipitation](#)
- [Flow Cytometry](#)
- [Cell Culture](#)

Chordin Polyclonal Antibody - Images



Chordin Polyclonal Antibody - Background

Dorsalizing factor. Key developmental protein that dorsalizes early vertebrate embryonic tissues by binding to ventralizing TGF-beta family bone morphogenetic proteins (BMPs) and sequestering them in latent complexes (By similarity).