

EPG5 Polyclonal Antibody
Catalog # AP74180**Specification**

EPG5 Polyclonal Antibody - Product Information

Application	IHC-P
Primary Accession	Q9HCE0
Reactivity	Human
Host	Rabbit
Clonality	Polyclonal

EPG5 Polyclonal Antibody - Additional Information**Gene ID** 57724**Other Names**

Ectopic P granules protein 5 homolog

Dilution

IHC-P~~N/A

Format

Liquid in PBS containing 50% glycerol, 0.5% BSA and 0.09% (W/V) sodium azide.

Storage Conditions

-20°C

EPG5 Polyclonal Antibody - Protein Information**Name** EPG5**Synonyms** KIAA1632**Function**

Involved in autophagy. May play a role in a late step of autophagy, such as clearance of autophagosomal cargo. Plays a key role in innate and adaptive immune response triggered by unmethylated cytidine-phosphate-guanosine (CpG) dinucleotides from pathogens, and mediated by the nucleotide-sensing receptor TLR9. It is necessary for the translocation of CpG dinucleotides from early endosomes to late endosomes and lysosomes, where TLR9 is located (PubMed:29130391).

Cellular Location

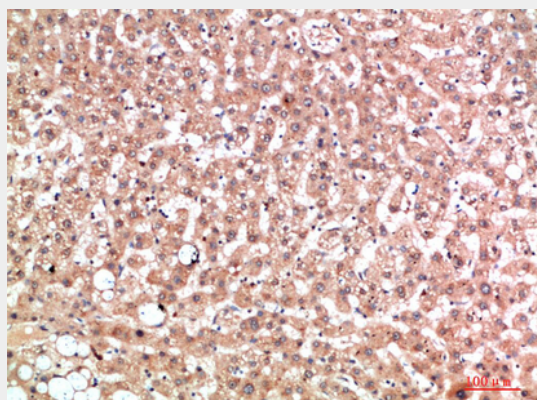
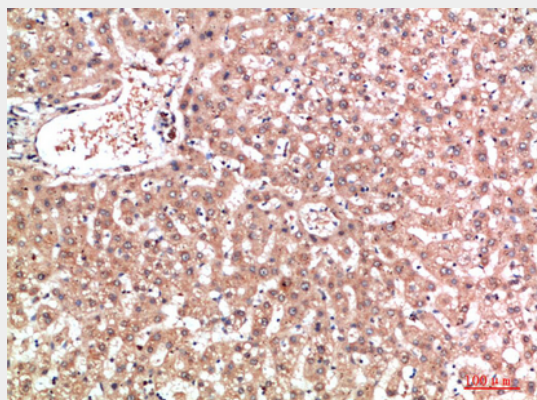
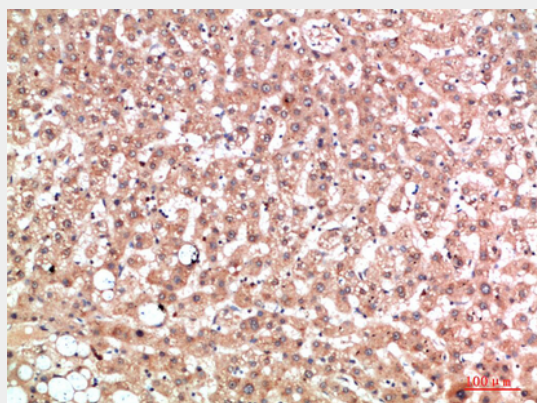
Cytoplasm, perinuclear region. Lysosome

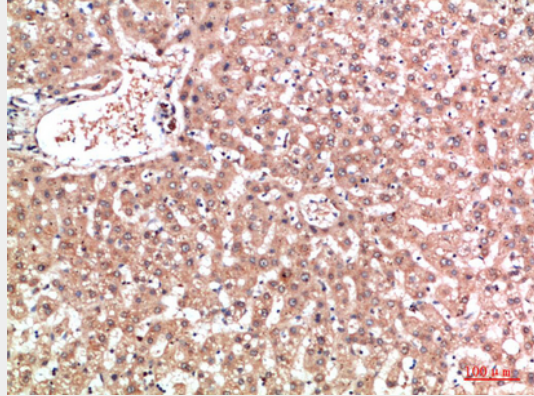
EPG5 Polyclonal Antibody - Protocols

Provided below are standard protocols that you may find useful for product applications.

- [Western Blot](#)
- [Blocking Peptides](#)
- [Dot Blot](#)
- [Immunohistochemistry](#)
- [Immunofluorescence](#)
- [Immunoprecipitation](#)
- [Flow Cytometry](#)
- [Cell Culture](#)

EPG5 Polyclonal Antibody - Images





EPG5 Polyclonal Antibody - Background

Involved in autophagy. May play a role in a late step of autophagy, such as clearance of autophagosomal cargo.